

Datasheet for ABIN2775755  
**anti-CRIP2 antibody (N-Term)**[Go to Product page](#)[1 Image](#)[1 Publication](#)

## Overview

Quantity:	100 µL
Target:	CRIP2
Binding Specificity:	N-Term
Reactivity:	Human, Mouse, Rat, Guinea Pig, Cow, Dog
Host:	Rabbit
Clonality:	Polyclonal
Conjugate:	This CRIP2 antibody is un-conjugated
Application:	Western Blotting (WB)

## Product Details

Immunogen:	The immunogen is a synthetic peptide directed towards the N terminal region of human CRIP2
Sequence:	EKPLAEGPQV TGPIEVPAAR AEERKASGPP KGPSRASSVT TFTGEPNTCP
Predicted Reactivity:	Cow: 93%, Dog: 93%, Guinea Pig: 100%, Human: 100%, Mouse: 93%, Rat: 93%
Characteristics:	This is a rabbit polyclonal antibody against CRIP2. It was validated on Western Blot using a cell lysate as a positive control.
Purification:	Affinity Purified

## Target Details

Target:	CRIP2
Alternative Name:	CRIP2 ( <a href="#">CRIP2 Products</a> )

## Target Details

Background:	<p>Human ESP1/CRP2 protein has two LIM domains, and each shares 35.1 % and 77 or 79 % identical residues with human cysteine-rich protein (CRP) and rat CRIP, respectively. Northern blot analysis of ESP1/CRP2 in various human tissues showed distinct tissue distributions compared with CRP and CRIP, suggesting that each might serve related but specific roles in tissue organization or function. Using a panel of human-rodent somatic cell hybrids, the ESP1/CRP2 locus was assigned to chromosome 14. Fluorescence in situ hybridization, using cDNA and a genome DNA fragment of the ESP1/CRP2 as probes, confirms this assignment and relegates regional localization to band 14q32.3.</p> <p>Alias Symbols: CRIP, CRP2, ESP1</p> <p>Protein Interaction Partner: BAG3, ATXN1, APP, ATN1, OSGEP, GADD45G, SPRY2, TK1, KLF10, SMN1, PCYT2, ATP1B1, GATA6, GATA4, PRKG1, SRF, PTPN13,</p> <p>Protein Size: 208</p>
Molecular Weight:	22 kDa
Gene ID:	1397
NCBI Accession:	<a href="#">NM_001312</a> , <a href="#">NP_001303</a>
UniProt:	<a href="#">P52943</a>

## Application Details

Application Notes:	Optimal working dilutions should be determined experimentally by the investigator.
Comment:	Antigen size: 208 AA
Restrictions:	For Research Use only

## Handling

Format:	Liquid
Concentration:	Lot specific
Buffer:	Liquid. Purified antibody supplied in 1x PBS buffer with 0.09 % (w/v) sodium azide and 2 % sucrose.
Preservative:	Sodium azide
Precaution of Use:	This product contains Sodium azide: a POISONOUS AND HAZARDOUS SUBSTANCE which should be handled by trained staff only.
Handling Advice:	Avoid repeated freeze-thaw cycles.

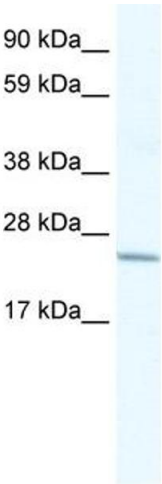
Handling

Storage:	-20 °C
Storage Comment:	For short term use, store at 2-8°C up to 1 week. For long term storage, store at -20°C in small aliquots to prevent freeze-thaw cycles.

Publications

Product cited in:	Tsui, Chan, Cheuk, Liew, Waye, Fung, Lee: "A novel cDNA encoding for a LIM domain protein located at human chromosome 14q32 as a candidate for leukemic translocation." in: <b>Biochemistry and molecular biology international</b> , Vol. 39, Issue 4, pp. 747-54, (1997) ( <a href="#">PubMed</a> ).
-------------------	---

Images



**Western Blotting**

**Image 1.** WB Suggested Anti-CRIP2 Antibody Titration: 0.2-1 ug/ml ELISA Titer: 1:62500 Positive Control: Human Placenta