

Datasheet for ABIN2775757
anti-ENO1 antibody (C-Term)



[Go to Product page](#)

3 Images

1 Publication

Overview

Quantity:	100 µL
Target:	ENO1
Binding Specificity:	C-Term
Reactivity:	Human, Mouse, Rat, Cow, Zebrafish (Danio rerio), Guinea Pig, Rabbit, Horse, Dog, Sheep, Saccharomyces cerevisiae
Host:	Rabbit
Clonality:	Polyclonal
Conjugate:	This ENO1 antibody is un-conjugated
Application:	Western Blotting (WB), Immunohistochemistry (IHC)

Product Details

Immunogen:	The immunogen is a synthetic peptide directed towards the C terminal region of human ENO1
Sequence:	VVGLCTGQIK TGAPCRSERL AKYNQLLRIE EELGSKAKFA GRNFRNPLAK
Predicted Reactivity:	Cow: 93%, Dog: 93%, Guinea Pig: 100%, Horse: 100%, Human: 100%, Mouse: 93%, Rabbit: 100%, Rat: 100%, Sheep: 93%, Yeast: 79%, Zebrafish: 79%
Characteristics:	This is a rabbit polyclonal antibody against ENO1. It was validated on Western Blot using a cell lysate as a positive control.
Purification:	Protein A purified

Target Details

Target:	ENO1
---------	------

Target Details

Alternative Name:	ENO1 (ENO1 Products)
Background:	<p>ENO1 is one of three enolase isoenzymes found in mammals, it encodes alpha-enolase, a homodimeric soluble enzyme, and also encodes a shorter monomeric structural lens protein, tau-crystallin. The two proteins are made from the same message. The full length protein, the isoenzyme, is found in the cytoplasm. The shorter protein is produced from an alternative translation start, is localized to the nucleus, and has been found to bind to an element in the c-myc promoter. A pseudogene has been identified that is located on the other arm of the same chromosome.</p> <p>Alias Symbols: NNE, PPH, MPB1, ENO1L1</p> <p>Protein Interaction Partner: UBC, FUS, HUWE1, ISG15, SUMO2, SUMO3, IVNS1ABP, STAU1, MDM2, WWOX, EED, FBXO6, UPF2, YWHAQ, UBD, TERT, SRC, RAD52, NPM1, BHLHE40, VCAM1, HCVgp1, ITGA4, FN1, ATF2, SERPING1, AMBP, LIG4, BRCA1, MDC1, PGK1, ITPA, GAPDH, FYN, FLNC, ENO3, Htt, TPI1, PPIA, AKT1</p> <p>Protein Size: 434</p>
Molecular Weight:	47 kDa
Gene ID:	2023
NCBI Accession:	NM_001428 , NP_001419
UniProt:	Q53HR3

Application Details

Application Notes:	Optimal working dilutions should be determined experimentally by the investigator.
Comment:	Antigen size: 434 AA
Restrictions:	For Research Use only

Handling

Format:	Liquid
Concentration:	Lot specific
Buffer:	Liquid. Purified antibody supplied in 1x PBS buffer with 0.09 % (w/v) sodium azide and 2 % sucrose.
Preservative:	Sodium azide
Precaution of Use:	This product contains Sodium azide: a POISONOUS AND HAZARDOUS SUBSTANCE which

Handling

	should be handled by trained staff only.
Handling Advice:	Avoid repeated freeze-thaw cycles.
Storage:	-20 °C
Storage Comment:	For short term use, store at 2-8°C up to 1 week. For long term storage, store at -20°C in small aliquots to prevent freeze-thaw cycles.

Publications

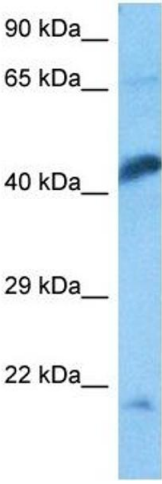
Product cited in:	Rambaruth, Greenwell, Dwek: "The lectin Helix pomatia agglutinin recognizes O-GlcNAc containing glycoproteins in human breast cancer." in: Glycobiology , Vol. 22, Issue 6, pp. 839-48, (2012) (PubMed).
-------------------	---

Images



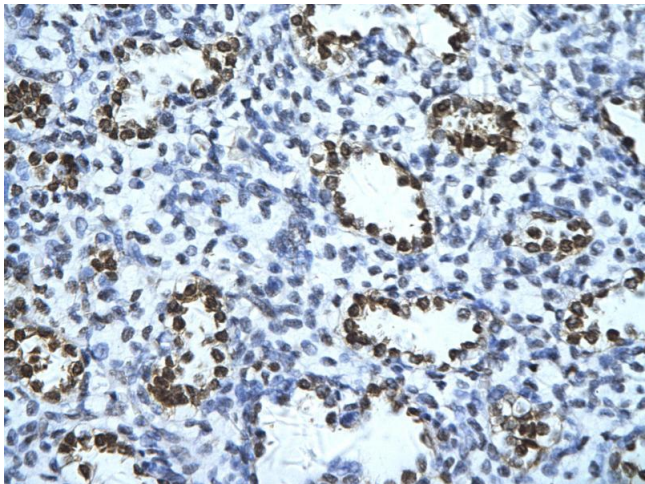
Western Blotting

Image 1. WB Suggested Anti-ENO1 Antibody Titration: 1.25ug/ml ELISA Titer: 1:62500 Positive Control: Jurkat cell lysate ENO1 is strongly supported by BioGPS gene expression data to be expressed in Human Jurkat cells



Western Blotting

Image 2. Host: Rat Target Name: ENO1 Sample Tissue: Rat Skeletal Muscle Antibody Dilution: 1ug/ml



Immunohistochemistry

Image 3. Rabbit Anti-ENO1 Antibody Paraffin Embedded
Tissue: Human alveolar cell Cellular Data: Epithelial cells of
renal tubule Antibody Concentration: 4.0-8.0 ug/ml
Magnification: 400X