

Datasheet for ABIN2775758
anti-ENO1 antibody (Middle Region)

7 Images

5 Publications

[Go to Product page](#)

Overview

Quantity:	100 µL
Target:	ENO1
Binding Specificity:	Middle Region
Reactivity:	Human, Mouse, Rat, Cow, Zebrafish (Danio rerio), Guinea Pig, Rabbit, Horse, Dog, Pig
Host:	Rabbit
Clonality:	Polyclonal
Conjugate:	This ENO1 antibody is un-conjugated
Application:	Western Blotting (WB), Immunohistochemistry (IHC)

Product Details

Immunogen:	The immunogen is a synthetic peptide directed towards the middle region of human ENO1
Sequence:	VAASEFFRSG KYDLDFKSPD DPSRYISPDQ LADLYKSFik DYPVVSIEDP
Predicted Reactivity:	Cow: 79%, Dog: 93%, Guinea Pig: 93%, Horse: 79%, Human: 100%, Mouse: 93%, Pig: 100%, Rabbit: 93%, Rat: 100%, Zebrafish: 93%
Characteristics:	This is a rabbit polyclonal antibody against ENO1. It was validated on Western Blot and immunohistochemistry.
Purification:	Affinity Purified

Target Details

Target:	ENO1
---------	------

Target Details

Alternative Name:	ENO1 (ENO1 Products)
Background:	<p>ENO1 encodes one of three enolase isoenzymes found in mammals, it encodes alpha-enolase, a homodimeric soluble enzyme, and also encodes a shorter monomeric structural lens protein, tau-crystallin. The two proteins are made from the same message. The full length protein, the isoenzyme, is found in the cytoplasm. The shorter protein is produced from an alternative translation start, is localized to the nucleus, and has been found to bind to an element in the c-myc promoter. A pseudogene has been identified that is located on the other arm of the same chromosome.</p> <p>Alias Symbols: NNE, PPH, MPB1, ENO1L1</p> <p>Protein Interaction Partner: UBC, FUS, HUWE1, ISG15, SUMO2, SUMO3, IVNS1ABP, STAU1, MDM2, WWOX, EED, FBXO6, UPF2, YWHAQ, UBD, TERT, SRC, RAD52, NPM1, BHLHE40, VCAM1, HCVgp1, ITGA4, FN1, ATF2, SERPING1, AMBP, LIG4, BRCA1, MDC1, PGK1, ITPA, GAPDH, FYN, FLNC, ENO3, Htt, TPI1, PPIA, AKT1</p> <p>Protein Size: 434</p>
Molecular Weight:	47 kDa
Gene ID:	2023
NCBI Accession:	NM_001428 , NP_001419
UniProt:	Q53HR3

Application Details

Application Notes:	Optimal working dilutions should be determined experimentally by the investigator.
Comment:	Antigen size: 434 AA
Restrictions:	For Research Use only

Handling

Format:	Liquid
Concentration:	Lot specific
Buffer:	Liquid. Purified antibody supplied in 1x PBS buffer with 0.09 % (w/v) sodium azide and 2 % sucrose.
Preservative:	Sodium azide
Precaution of Use:	This product contains Sodium azide: a POISONOUS AND HAZARDOUS SUBSTANCE which

Handling

should be handled by trained staff only.

Handling Advice: Avoid repeated freeze-thaw cycles.

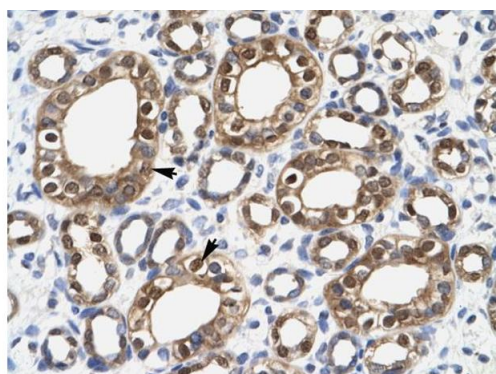
Storage: -20 °C

Storage Comment: For short term use, store at 2-8°C up to 1 week. For long term storage, store at -20°C in small aliquots to prevent freeze-thaw cycles.

Publications

Product cited in: Mehrle, Rosenfelder, Schupp, del Val, Artl, Hahne, Bechtel, Simpson, Hofmann, Hide, Glatting, Huber, Pepperkok, Poustka, Wiemann: "The LIFEdb database in 2006." in: **Nucleic acids research**, Vol. 34, Issue Database issue, pp. D415-8, (2005) ([PubMed](#)).

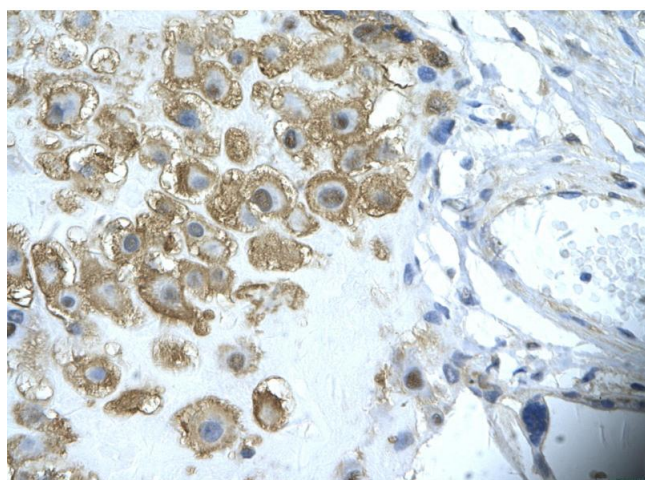
Images



Rabbit Anti-ENO1 Antibody
Catalog Number: ARP34377
Lot Number: QC4726
Paraffin Embedded Tissue: Human Kidney
Cells with Positive label: Epithelial cells of collecting tubule (Indicated with Arrows)
Antibody Concentration: 4.0-8.0 µg/ml
Magnification: 400X

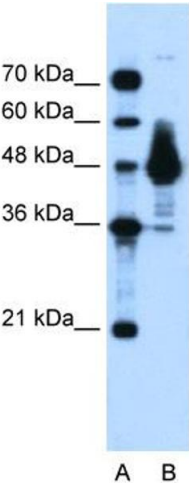
Immunohistochemistry

Image 1. Human kidney



Immunohistochemistry

Image 2. Rabbit Anti-ENO1 Antibody Paraffin Embedded Tissue: Human placenta cell Cellular Data: Epithelial cells of renal tubule Antibody Concentration: 4.0-8.0 µg/ml Magnification: 400X



Western Blotting

Image 3. WB Suggested Anti-ENO1 Antibody Titration:
0.03ug/ml ELISA Titer: 1:1562500 Positive Control: Human
Small Intestine

Please check the [product details page](#) for more images. Overall 7 images are available for ABIN2775758.