



[Go to Product page](#)

Datasheet for ABIN2775759
anti-FHL1 antibody (C-Term)

4 Images

12 Publications

Overview

Quantity:	100 µL
Target:	FHL1
Binding Specificity:	C-Term
Reactivity:	Human, Mouse, Rat, Dog, Cow, Guinea Pig, Rabbit, Sheep, Horse
Host:	Rabbit
Clonality:	Polyclonal
Conjugate:	This FHL1 antibody is un-conjugated
Application:	Western Blotting (WB), Immunohistochemistry (IHC)

Product Details

Immunogen:	The immunogen is a synthetic peptide directed towards the C terminal region of human FHL1
Sequence:	YYCVD CYKNF VAKKCAGCKN PITGFGKGSS VWAYEGQSWH DYCFHCKKCS
Predicted Reactivity:	Cow: 100%, Dog: 100%, Guinea Pig: 100%, Horse: 100%, Human: 100%, Mouse: 100%, Rabbit: 93%, Rat: 100%, Sheep: 100%
Characteristics:	This is a rabbit polyclonal antibody against FHL1. It was validated on Western Blot and immunohistochemistry.
Purification:	Protein A purified

Target Details

Target:	FHL1
---------	------

Target Details

Alternative Name: [FHL1 \(FHL1 Products\)](#)

Background: LIM proteins, named for 'LIN11, ISL1, and MEC3,' are defined by the possession of a highly conserved double zinc finger motif called the LIM domain. FHL1 may play an important role during the early stages of skeletal muscle differentiation, specifically in alpha5beta1-integrin-mediated signaling pathways.

Alias Symbols: KYOT, SLIM, FHL-1, FHL1A, FHL1B, FLH1A, SLIM1, XMPMA, SLIM-1, SLIMMER

Protein Interaction Partner: SUMO2, UBC, SRPK1, SMAD4, SMAD3, SMAD2, LMNA, CSNK1D, NRIP1, ESR1, HIVEP3, SMURF1, UBE2E2, STAT4, RING1, RBPJ, FHL1, KCNA5, PRNP, USP15, HHV8GK18_gp81, SP1, TXNIP, DEAF1, PDE4DIP, AKAP12, EED, HES1, DBN1, CBX4, FHL2, SRF, MYBPC1,

Protein Size: 280

Molecular Weight: 32 kDa

Gene ID: 2273

NCBI Accession: [NM_001449](#), [NP_001440](#)

UniProt: [Q6IB30](#)

Application Details

Application Notes: Optimal working dilutions should be determined experimentally by the investigator.

Comment: Antigen size: 280 AA

Restrictions: For Research Use only

Handling

Format: Liquid

Concentration: Lot specific

Buffer: Liquid. Purified antibody supplied in 1x PBS buffer with 0.09 % (w/v) sodium azide and 2 % sucrose.

Preservative: Sodium azide

Precaution of Use: This product contains Sodium azide: a POISONOUS AND HAZARDOUS SUBSTANCE which should be handled by trained staff only.

Handling Advice: Avoid repeated freeze-thaw cycles.

Handling

Storage: -20 °C

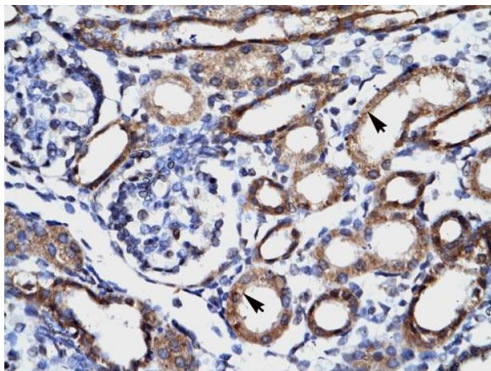
Storage Comment: For short term use, store at 2-8°C up to 1 week. For long term storage, store at -20°C in small aliquots to prevent freeze-thaw cycles.

Publications

Product cited in: Tordjman, Leroyer, Chauvet, Quette, Chauvet, Tomkiewicz, Chapron, Barouki, Forest, Aggerbeck, Antoine: "Cytosolic aspartate aminotransferase, a new partner in adipocyte glyceroneogenesis and an atypical target of thiazolidinedione." in: **The Journal of biological chemistry**, Vol. 282, Issue 32, pp. 23591-602, (2007) ([PubMed](#)).

There are more publications referencing this product on: [Product page](#)

Images



Rabbit Anti-FHL1 Antibody
Catalog Number: ARP34378
Lot Number: QC4098
Paraffin Embedded Tissue: Human Kidney
Cells with Positive label: Epithelial cells of renal tubule (Indicated with Arrows)
Antibody Concentration: 4.0-8.0 µg/ml
Magnification: 400X

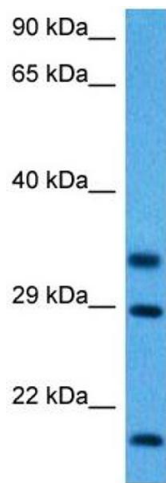


Immunohistochemistry

Image 1. Human kidney

Western Blotting

Image 2. WB Suggested Anti-FHL1 Antibody Titration:
0.1ug/ml ELISA Titer: 1:312500 Positive Control: Human
Muscle



Western Blotting

Image 3. Host: Mouse Target Name: FHL1 Sample Tissue: Mouse Skeletal Muscle Antibody Dilution: 1ug/ml

Please check the [product details page](#) for more images. Overall 4 images are available for ABIN2775759.