

Datasheet for ABIN2775765
anti-ZFP36 antibody (N-Term)[Go to Product page](#)

2 Images

Overview

| | |
|----------------------|---|
| Quantity: | 100 µL |
| Target: | ZFP36 |
| Binding Specificity: | N-Term |
| Reactivity: | Human, Mouse, Rat, Saccharomyces cerevisiae |
| Host: | Rabbit |
| Clonality: | Polyclonal |
| Conjugate: | This ZFP36 antibody is un-conjugated |
| Application: | Western Blotting (WB), Immunohistochemistry (IHC) |

Product Details

| | |
|-----------------------|---|
| Immunogen: | The immunogen is a synthetic peptide directed towards the N terminal region of human ZFP36 |
| Sequence: | SGPWSLSPSD SSPSGVTSRL PGRSTSLVEG RSCGWVPPPP GFAPLAPRLG |
| Predicted Reactivity: | Human: 100%, Mouse: 92%, Rat: 92%, Yeast: 75% |
| Characteristics: | This is a rabbit polyclonal antibody against ZFP36. It was validated on Western Blot using a cell lysate as a positive control. |
| Purification: | Affinity Purified |

Target Details

| | |
|-------------------|--|
| Target: | ZFP36 |
| Alternative Name: | ZFP36 (ZFP36 Products) |

Target Details

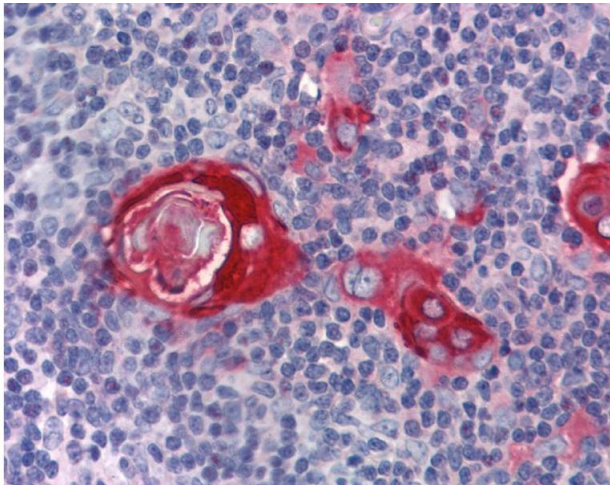
| | |
|-------------------|--|
| Background: | Located on chromosome 19, ZFP36 encodes a protein that is involved in controlling pro-inflammatory cytokines. Alias Symbols: G0S24, GOS24, NUP475, RNF162A, TIS11, TTP Protein Interaction Partner: YWHAB, PPP2CA, DNAJB1, DCP1B, DHX36, PRR5L, XRN1, UBC, TRAF2, EXOSC6, UPF2, EXOSC8, YWHAQ, TNF, DCP2, EDC3, DCP1A, EDC4, CDK6, APP, LIN28A, SH3KBP1, PABPC1, NCL, MAP3K4, HSPA4, HDAC7, HDAC3, NFKB1, HOXC9, HDAC1, CCDC85B, MAPKAPK2, YWHAG, SFN, HMGB1, NUP21 Protein Size: 326 |
| Molecular Weight: | 34 kDa |
| Gene ID: | 7538 |
| NCBI Accession: | NM_003407 , NP_003398 |
| UniProt: | P26651 |

Application Details

| | |
|--------------------|--|
| Application Notes: | Optimal working dilutions should be determined experimentally by the investigator. |
| Comment: | Antigen size: 326 AA |
| Restrictions: | For Research Use only |

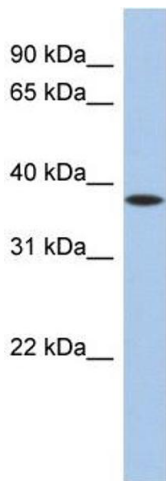
Handling

| | |
|--------------------|---|
| Format: | Liquid |
| Concentration: | Lot specific |
| Buffer: | Liquid. Purified antibody supplied in 1x PBS buffer with 0.09 % (w/v) sodium azide and 2 % sucrose. |
| Preservative: | Sodium azide |
| Precaution of Use: | This product contains Sodium azide: a POISONOUS AND HAZARDOUS SUBSTANCE which should be handled by trained staff only. |
| Handling Advice: | Avoid repeated freeze-thaw cycles. |
| Storage: | -20 °C |
| Storage Comment: | For short term use, store at 2-8°C up to 1 week. For long term storage, store at -20°C in small aliquots to prevent freeze-thaw cycles. |



Immunohistochemistry

Image 1.



Western Blotting

Image 2. WB Suggested Anti-ZFP36 Antibody Titration: 0.2-1 ug/ml ELISA Titer: 1:312500 Positive Control: PANC1 cell lysate ZFP36 is supported by BioGPS gene expression data to be expressed in PANC1