

Datasheet for ABIN2775770  
**anti-CSRP1 antibody (Middle Region)**



[Go to Product page](#)

1 Image

## Overview

Quantity:	100 µL
Target:	CSRP1
Binding Specificity:	Middle Region
Reactivity:	Human, Mouse, Rat, Dog, Guinea Pig, Rabbit, Cow, Horse, Zebrafish (Danio rerio)
Host:	Rabbit
Clonality:	Polyclonal
Conjugate:	This CSRP1 antibody is un-conjugated
Application:	Western Blotting (WB)

## Product Details

Immunogen:	The immunogen is a synthetic peptide directed towards the middle region of human CSRP1
Sequence:	YGYGQGAGTL STDKGESLGI KHEEAPGHRP TTNP NASKFA QKIGGSERCP
Predicted Reactivity:	Cow: 92%, Dog: 100%, Guinea Pig: 100%, Horse: 93%, Human: 100%, Mouse: 100%, Rabbit: 100%, Rat: 100%, Zebrafish: 83%
Characteristics:	This is a rabbit polyclonal antibody against CSRP1. It was validated on Western Blot using a cell lysate as a positive control.
Purification:	Affinity Purified

## Target Details

Target:	CSRP1
---------	-------

## Target Details

Alternative Name:	CSRP1 ( <a href="#">CSRP1 Products</a> )
Background:	<p>CSRP1 is a member of the cysteine-rich protein (CSRP) family. This gene family includes a group of LIM domain proteins, which may be involved in regulatory processes important for development and cellular differentiation. The LIM/double zinc-finger motif found in this gene product occurs in proteins with critical functions in gene regulation, cell growth, and somatic differentiation. CSRP1 is a member of the CSRP family of genes encoding a group of LIM domain proteins, which may be involved in regulatory processes important for development and cellular differentiation. The LIM/double zinc-finger motif found in CRP1 is found in a group of proteins with critical functions in gene regulation, cell growth, and somatic differentiation. Other genes in the family include CSRP2 and CSRP3. Publication Note: This RefSeq record includes a subset of the publications that are available for this gene. Please see the Entrez Gene record to access additional publications.</p> <p>Alias Symbols: CRP, CRP1, CSRP, CYRP, D1S181E, DKFZp686M148</p> <p>Protein Interaction Partner: SUZ12, RNF2, BMI1, MACF1, YBX3, PRKAR2A, BAG3, GRB2, ACTN1, UBC, APP, EGFR, CSRP1,</p> <p>Protein Size: 193</p>
Molecular Weight:	20 kDa
Gene ID:	1465
NCBI Accession:	<a href="#">NM_004078</a> , <a href="#">NP_004069</a>
UniProt:	<a href="#">P21291</a>

## Application Details

Application Notes:	Optimal working dilutions should be determined experimentally by the investigator.
Comment:	Antigen size: 193 AA
Restrictions:	For Research Use only

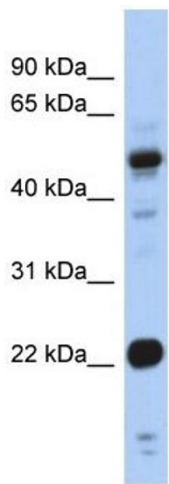
## Handling

Format:	Liquid
Concentration:	Lot specific
Buffer:	Liquid. Purified antibody supplied in 1x PBS buffer with 0.09 % (w/v) sodium azide and 2 % sucrose.

Handling

Preservative:	Sodium azide
Precaution of Use:	This product contains Sodium azide: a POISONOUS AND HAZARDOUS SUBSTANCE which should be handled by trained staff only.
Handling Advice:	Avoid repeated freeze-thaw cycles.
Storage:	-20 °C
Storage Comment:	For short term use, store at 2-8°C up to 1 week. For long term storage, store at -20°C in small aliquots to prevent freeze-thaw cycles.

Images



**Western Blotting**

**Image 1.** WB Suggested Anti-CSRP1 Antibody Titration: 0.2-1 ug/ml ELISA Titer: 1:312500 Positive Control: Human Stomach