



[Go to Product page](#)

Datasheet for ABIN2775774  
**anti-DPF1 antibody (Middle Region)**

2 Images

Overview

Quantity:	100 µL
Target:	DPF1
Binding Specificity:	Middle Region
Reactivity:	Human, Mouse, Rat, Cow, Dog, Horse, Guinea Pig
Host:	Rabbit
Clonality:	Polyclonal
Conjugate:	This DPF1 antibody is un-conjugated
Application:	Western Blotting (WB)

Product Details

Immunogen:	The immunogen is a synthetic peptide directed towards the middle region of human DPF1
Sequence:	KELAWVPEAQ RKHTAKKAPD GTVIPNGYCD FCLGGSKKTG CPEDLISCAD
Predicted Reactivity:	Cow: 100%, Dog: 100%, Guinea Pig: 100%, Horse: 100%, Human: 100%, Mouse: 100%, Rat: 100%
Characteristics:	This is a rabbit polyclonal antibody against DPF1. It was validated on Western Blot using a cell lysate as a positive control.
Purification:	Affinity Purified

Target Details

Target:	DPF1
Alternative Name:	DPF1 ( <a href="#">DPF1 Products</a> )

## Target Details

---

Background: Part of the d4 family of zinc finger proteins, DPF1 has been localized on chromosome 19.  
Alias Symbols: NEUD4, BAF45b, neuro-d4  
Protein Interaction Partner: SMARCE1, SMARCB1, SMARCC1, SMARCA4, SMARCA2, RELA, NFKB1, ESRRA, RPN1,  
Protein Size: 353

Molecular Weight: 40 kDa

Gene ID: 8193

NCBI Accession: [NM\\_004647](#), [NP\\_004638](#)

UniProt: [Q92782](#)

## Application Details

---

Application Notes: Optimal working dilutions should be determined experimentally by the investigator.

Comment: Antigen size: 353 AA

Restrictions: For Research Use only

## Handling

---

Format: Liquid

Concentration: Lot specific

Buffer: Liquid. Purified antibody supplied in 1x PBS buffer with 0.09 % (w/v) sodium azide and 2 % sucrose.

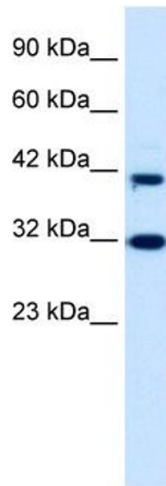
Preservative: Sodium azide

Precaution of Use: This product contains Sodium azide: a POISONOUS AND HAZARDOUS SUBSTANCE which should be handled by trained staff only.

Handling Advice: Avoid repeated freeze-thaw cycles.

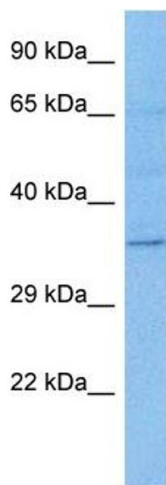
Storage: -20 °C

Storage Comment: For short term use, store at 2-8°C up to 1 week. For long term storage, store at -20°C in small aliquots to prevent freeze-thaw cycles.



#### Western Blotting

**Image 1.** WB Suggested Anti-DPF1 Antibody Titration: 0.2-1 ug/ml ELISA Titer: 1:312500 Positive Control: HepG2 cell lysate



#### Western Blotting

**Image 2.** Host: Rat Target Name: DPF1 Sample Tissue: Rat Skeletal Muscle Antibody Dilution: 1ug/ml