

Datasheet for ABIN2775777
anti-IER2 antibody (N-Term)



[Go to Product page](#)

2 Images

Overview

Quantity:	100 µL
Target:	IER2
Binding Specificity:	N-Term
Reactivity:	Human, Saccharomyces cerevisiae
Host:	Rabbit
Clonality:	Polyclonal
Conjugate:	This IER2 antibody is un-conjugated
Application:	Western Blotting (WB), Immunohistochemistry (IHC)

Product Details

Immunogen:	The immunogen is a synthetic peptide directed towards the N terminal region of human IER2
Sequence:	LYLSAKVEAL EPEVSLPAAL PSDPRLHPPR EAESTAETAT PDGEHPFPEP
Predicted Reactivity:	Human: 100%, Yeast: 77%
Characteristics:	This is a rabbit polyclonal antibody against IER2. It was validated on Western Blot and immunohistochemistry.
Purification:	Affinity Purified

Target Details

Target:	IER2
Alternative Name:	IER2 (IER2 Products)

Target Details

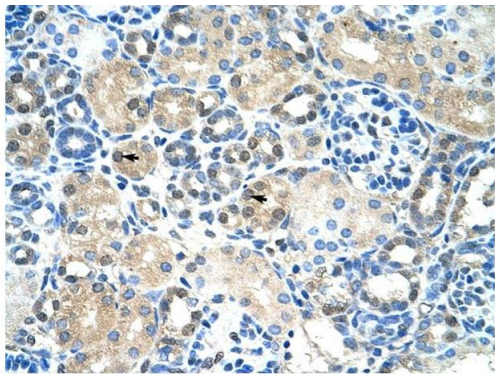
Background:	The function remains unknown. Alias Symbols: ETR101, MGC111472, MGC15265 Protein Interaction Partner: UBC, UBD, ELAVL1, SUMO2, PPP2R2B, Protein Size: 223
Molecular Weight:	24 kDa
Gene ID:	9592
NCBI Accession:	NM_004907 , NP_004898
UniProt:	Q9BTL4

Application Details

Application Notes:	Optimal working dilutions should be determined experimentally by the investigator.
Comment:	Antigen size: 223 AA
Restrictions:	For Research Use only

Handling

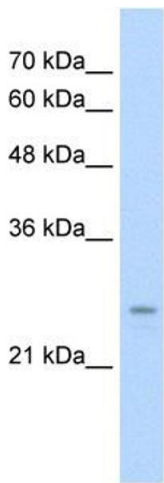
Format:	Liquid
Concentration:	Lot specific
Buffer:	Liquid. Purified antibody supplied in 1x PBS buffer with 0.09 % (w/v) sodium azide and 2 % sucrose.
Preservative:	Sodium azide
Precaution of Use:	This product contains Sodium azide: a POISONOUS AND HAZARDOUS SUBSTANCE which should be handled by trained staff only.
Handling Advice:	Avoid repeated freeze-thaw cycles.
Storage:	-20 °C
Storage Comment:	For short term use, store at 2-8°C up to 1 week. For long term storage, store at -20°C in small aliquots to prevent freeze-thaw cycles.



Rabbit Anti-IER2 Antibody
Catalog Number: ARP34401
Lot Number: QC11628
Paraffin Embedded Tissue: Human Kidney
Cells with Positive label: Epithelial cells of renal tubule (Indicated with Arrows)
Antibody Concentration: 4.0-8.0 µg/ml
Magnification: 400X

Immunohistochemistry

Image 1. Human kidney



Western Blotting

Image 2. WB Suggested Anti-IER2 Antibody Titration: 0.2-1 ug/ml Positive Control: HepG2 cell lysate