



[Go to Product page](#)

Datasheet for ABIN2775782
anti-ARIH2 antibody (N-Term)

3 Images

Overview

Quantity:	100 µL
Target:	ARIH2
Binding Specificity:	N-Term
Reactivity:	Human, Mouse, Rat, Dog, Cow, Horse, Rabbit, Guinea Pig
Host:	Rabbit
Clonality:	Polyclonal
Conjugate:	This ARIH2 antibody is un-conjugated
Application:	Western Blotting (WB), Immunohistochemistry (IHC)

Product Details

Immunogen:	The immunogen is a synthetic peptide directed towards the N terminal region of human ARIH2
Sequence:	EDYDPNCEEE EEEEEDDPGD IEDYYVGVAS DVEQQGADAF DPEEYQFTCL
Predicted Reactivity:	Cow: 93%, Dog: 100%, Guinea Pig: 100%, Horse: 100%, Human: 100%, Mouse: 100%, Rabbit: 100%, Rat: 100%
Characteristics:	This is a rabbit polyclonal antibody against ARIH2. It was validated on Western Blot and immunohistochemistry.
Purification:	Protein A purified

Target Details

Target:	ARIH2
---------	-------

Target Details

Alternative Name:	ARIH2 (ARIH2 Products)
Background:	<p>ARIH2 might act as an E3 ubiquitin-protein ligase, or as part of E3 complex, which accepts ubiquitin from specific E2 ubiquitin-conjugating enzymes, such as UBE2L3/UBCM4, and then transfers it to substrates.</p> <p>Alias Symbols: ARI2, FLJ10938, FLJ33921, TRIAD1</p> <p>Protein Interaction Partner: UBE2L3, UBC, REL, MDM2, CCDC33, UBE2L6, PABPN1, UGP2, APEX1, PARP6, TWF2, EHD1, PDLIM1, PAPSS2, NUBP1, HK2, ARIH2, CUL5, NEDD8, RHEB, VCP, NOTCH1, PHF7, TRIM27, UBE2N, TP53, PML, DISC1, UBE2R2, UBE2D4, UBE2T, UBE2E3, UBE2V1, UBE2E2, UBE2E1, UBE2D3, UBE2D2</p> <p>Protein Size: 493</p>
Molecular Weight:	58 kDa
Gene ID:	10425
NCBI Accession:	NM_006321 , NP_006312
UniProt:	O95376

Application Details

Application Notes:	Optimal working dilutions should be determined experimentally by the investigator.
Comment:	Antigen size: 493 AA
Restrictions:	For Research Use only

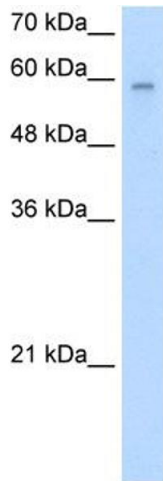
Handling

Format:	Liquid
Concentration:	Lot specific
Buffer:	Liquid. Purified antibody supplied in 1x PBS buffer with 0.09 % (w/v) sodium azide and 2 % sucrose.
Preservative:	Sodium azide
Precaution of Use:	This product contains Sodium azide: a POISONOUS AND HAZARDOUS SUBSTANCE which should be handled by trained staff only.
Handling Advice:	Avoid repeated freeze-thaw cycles.
Storage:	-20 °C

Handling

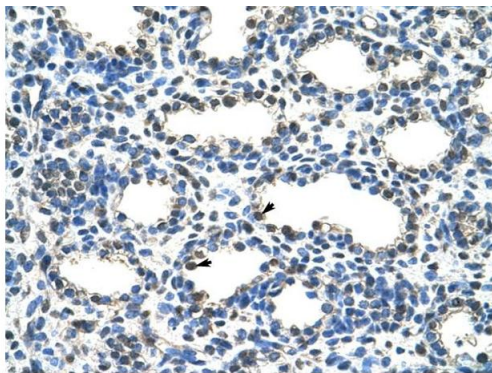
Storage Comment: For short term use, store at 2-8°C up to 1 week. For long term storage, store at -20°C in small aliquots to prevent freeze-thaw cycles.

Images



Western Blotting

Image 1. WB Suggested Anti-ARIH2 Antibody Titration: 2.5ug/ml Positive Control: Jurkat cell lysate There is BioGPS gene expression data showing that ARIH2 is expressed in Jurkat



Rabbit Anti-ARIH2 Antibody
Catalog Number: ARP34418
Lot Number: QC11439
Paraffin Embedded Tissue: Human Lung
Cells with Positive label: Alveolar cells (Indicated with Arrows)
Antibody Concentration: 4.0-8.0 µg/ml
Magnification: 400X

Immunohistochemistry

Image 2. Human Lung



Western Blotting

Image 3. Host: Rabbit Target Name: ARIH2 Sample Type: Jurkat Lane A: Primary Antibody Lane B: Primary Antibody + Blocking Peptide Primary Antibody Concentration: 1.25ug/mL Peptide Concentration: 1.0ug/mL Lysate Quantity: 25ug/lane Gel Concentration: 12% There is BioGPS gene expression data showing that ARIH2 is expressed in Jurkat