

Datasheet for ABIN2775789
anti-USF1 antibody (N-Term)

3 Images

[Go to Product page](#)

Overview

| | |
|----------------------|--|
| Quantity: | 100 µL |
| Target: | USF1 |
| Binding Specificity: | N-Term |
| Reactivity: | Human, Mouse, Rat, Cow, Dog, Horse, Rabbit, Guinea Pig |
| Host: | Rabbit |
| Clonality: | Polyclonal |
| Conjugate: | This USF1 antibody is un-conjugated |
| Application: | Western Blotting (WB) |

Product Details

| | |
|-----------------------|--|
| Immunogen: | The immunogen is a synthetic peptide directed towards the N terminal region of human USF1 |
| Sequence: | KGQQKTAETE EGTVQIQEGA VATGEDPTSV AIASIQSAAT FPDPNVKYVF |
| Predicted Reactivity: | Cow: 100%, Dog: 100%, Guinea Pig: 100%, Horse: 100%, Human: 100%, Mouse: 100%, Rabbit: 100%, Rat: 100% |
| Characteristics: | This is a rabbit polyclonal antibody against USF1. It was validated on Western Blot using a cell lysate as a positive control. |
| Purification: | Affinity Purified |

Target Details

| | |
|---------|------|
| Target: | USF1 |
|---------|------|

Target Details

| | |
|-------------------|---|
| Alternative Name: | USF1 (USF1 Products) |
| Background: | <p>USF1 is a member of the basic helix-loop-helix leucine zipper family, and can function as a cellular transcription factor. USF1 can activate transcription through pyrimidine-rich initiator (Inr) elements and E-box motifs. This gene has been linked to familial combined hyperlipidemia (FCHL). This gene encodes a member of the basic helix-loop-helix leucine zipper family, and can function as a cellular transcription factor. The encoded protein can activate transcription through pyrimidine-rich initiator (Inr) elements and E-box motifs. This gene has been linked to familial combined hyperlipidemia (FCHL). Two transcript variants encoding distinct isoforms have been identified for this gene.</p> <p>Alias Symbols: FCHL, FCHL1, HYPLIP1, MLTF, MLTFI, UEF, bHLHb11</p> <p>Protein Interaction Partner: FOSL1, USF1, TRAF2, FOS, USF2, BAG3, UBC, TCF3, APP, SETD1A, ASH2L, TRRAP, TAF6, SMARCA1, RBBP5, RBBP4, CHD8, WDR5, MAX, PRMT1, HCFC1, GTF3C1, GTF2I, BPTF, Cebpb, ELAVL1, SUMO2, KAT2B, XRCC5, TOP2B, SREBF1, PRKDC, XRCC6, PARP1, GTF2IRD1, SMARCA5, RBBP7, E</p> <p>Protein Size: 310</p> |
| Molecular Weight: | 33 kDa |
| Gene ID: | 7391 |
| NCBI Accession: | NM_007122 , NP_009053 |
| UniProt: | P22415 |
| Pathways: | Carbohydrate Homeostasis |

Application Details

| | |
|--------------------|--|
| Application Notes: | Optimal working dilutions should be determined experimentally by the investigator. |
| Comment: | Antigen size: 310 AA |
| Restrictions: | For Research Use only |

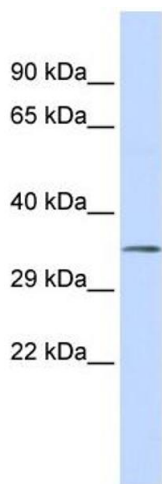
Handling

| | |
|----------------|---|
| Format: | Liquid |
| Concentration: | Lot specific |
| Buffer: | Liquid. Purified antibody supplied in 1x PBS buffer with 0.09 % (w/v) sodium azide and 2 % sucrose. |

Handling

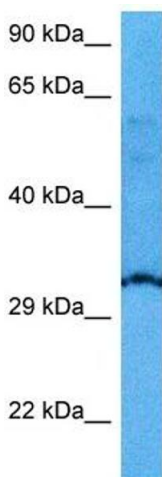
| | |
|--------------------|---|
| Preservative: | Sodium azide |
| Precaution of Use: | This product contains Sodium azide: a POISONOUS AND HAZARDOUS SUBSTANCE which should be handled by trained staff only. |
| Handling Advice: | Avoid repeated freeze-thaw cycles. |
| Storage: | -20 °C |
| Storage Comment: | For short term use, store at 2-8°C up to 1 week. For long term storage, store at -20°C in small aliquots to prevent freeze-thaw cycles. |

Images



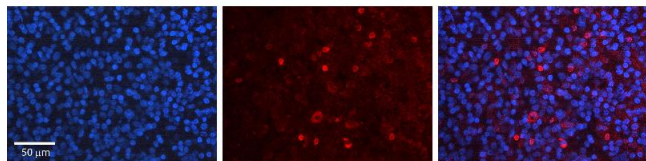
Western Blotting

Image 1. WB Suggested Anti-USF1 Antibody Titration: 0.2-1 ug/ml ELISA Titer: 1:12500 Positive Control: Human Muscle



Western Blotting

Image 2. Host: Mouse Target Name: USF1 Sample Tissue: Mouse Heart Antibody Dilution: 1ug/ml



Immunohistochemistry

Image 3. Rabbit Anti-USF1 Antibody Formalin Fixed Paraffin Embedded Tissue: Human Lymph Node Tissue Observed Staining: Nucleus Primary Antibody Concentration: 1:100 Other Working Concentrations: N/A Secondary Antibody: Donkey anti-Rabbit-Cy3 Secondary Antibody Concentration: 1:200 Magnification: 20X Exposure Time: 0.5 - 2.0 sec