

Datasheet for ABIN2775791
anti-BRD3 antibody (Middle Region)

5 Images

[Go to Product page](#)

Overview

Quantity:	100 µL
Target:	BRD3
Binding Specificity:	Middle Region
Reactivity:	Human, Mouse, Rat, Dog, Horse, Guinea Pig, Rabbit, Zebrafish (Danio rerio), Cow
Host:	Rabbit
Clonality:	Polyclonal
Conjugate:	This BRD3 antibody is un-conjugated
Application:	Western Blotting (WB), Immunohistochemistry (IHC)

Product Details

Immunogen:	The immunogen is a synthetic peptide directed towards the middle region of human BRD3
Sequence:	SGKKQAAKSK EELAQEKKKE LEKRLQDVSG QLSSSKKPAR KEKPGSAPSG
Predicted Reactivity:	Cow: 100%, Dog: 100%, Guinea Pig: 100%, Horse: 100%, Human: 100%, Mouse: 100%, Rabbit: 100%, Rat: 100%, Zebrafish: 79%
Characteristics:	This is a rabbit polyclonal antibody against BRD3. It was validated on Western Blot using a cell lysate as a positive control.
Purification:	Affinity Purified

Target Details

Target:	BRD3
---------	------

Target Details

Alternative Name:	BRD3 (BRD3 Products)
Background:	<p>BRD3 gene was identified based on its homology to the gene encoding the RING3 protein, a serine/threonine kinase. The gene localizes to 9q34, a region which contains several major histocompatibility complex (MHC) genes. The function of this protein is not known. This gene was identified based on its homology to the gene encoding the RING3 protein, a serine/threonine kinase. The gene localizes to 9q34, a region which contains several major histocompatibility complex (MHC) genes. The function of the encoded protein is not known.</p> <p>Alias Symbols: KIAA0043, ORFX, RING3L</p> <p>Protein Interaction Partner: SRPK2, MYC, UBC, YEATS4, APP, SPP1, ELAVL1, MAP1LC3B, tat, BRD7,</p> <p>Protein Size: 726</p>
Molecular Weight:	79 kDa
Gene ID:	8019
NCBI Accession:	NM_007371 , NP_031397
UniProt:	Q15059
Pathways:	Chromatin Binding

Application Details

Application Notes:	Optimal working dilutions should be determined experimentally by the investigator.
Comment:	Antigen size: 726 AA
Restrictions:	For Research Use only

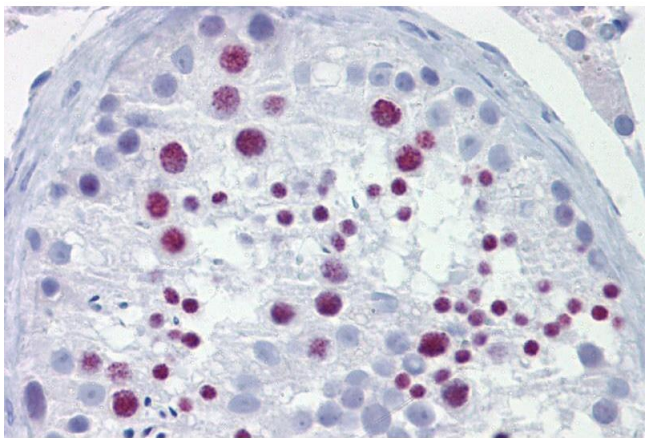
Handling

Format:	Liquid
Concentration:	Lot specific
Buffer:	Liquid. Purified antibody supplied in 1x PBS buffer with 0.09 % (w/v) sodium azide and 2 % sucrose.
Preservative:	Sodium azide
Precaution of Use:	This product contains Sodium azide: a POISONOUS AND HAZARDOUS SUBSTANCE which should be handled by trained staff only.

Handling

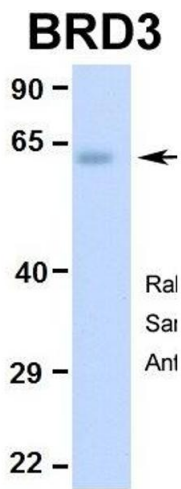
Handling Advice:	Avoid repeated freeze-thaw cycles.
Storage:	-20 °C
Storage Comment:	For short term use, store at 2-8°C up to 1 week. For long term storage, store at -20°C in small aliquots to prevent freeze-thaw cycles.

Images



Immunohistochemistry

Image 1. Immunohistochemistry with Testis tissue at an antibody concentration of 10µg/ml using anti-BRD3 antibody (ARP34431_P050)



Western Blotting

Image 2. Hum. Fetal Lung



Western Blotting

Image 3. WB Suggested Anti-BRD3 Antibody Titration: 0.2-1 ug/ml ELISA Titer: 1:1562500 Positive Control: Human brain

Please check the [product details page](#) for more images. Overall 5 images are available for ABIN2775791.