

Datasheet for ABIN2775793
anti-ATG4B antibody (C-Term)



[Go to Product page](#)

3 Images

Overview

Quantity:	100 µL
Target:	ATG4B
Binding Specificity:	C-Term
Reactivity:	Human, Mouse, Rat, Zebrafish (Danio rerio), Dog, Guinea Pig, Rabbit, Cow, Horse
Host:	Rabbit
Clonality:	Polyclonal
Conjugate:	This ATG4B antibody is un-conjugated
Application:	Western Blotting (WB), Immunohistochemistry (IHC)

Product Details

Immunogen:	The immunogen is a synthetic peptide directed towards the C terminal region of human APG4B
Sequence:	LGGALPMFEL VELQPSHLAC PDVLNLSLDS SDVERLERFF DSEDEDFEIL
Predicted Reactivity:	Cow: 93%, Dog: 100%, Guinea Pig: 100%, Horse: 100%, Human: 100%, Mouse: 100%, Rabbit: 100%, Rat: 100%, Zebrafish: 85%
Characteristics:	This is a rabbit polyclonal antibody against APG4B. It was validated on Western Blot and immunohistochemistry.
Purification:	Affinity Purified

Target Details

Target:	ATG4B
---------	-------

Target Details

Alternative Name:	APG4B (ATG4B Products)
Background:	<p>Autophagy is the process by which endogenous proteins and damaged organelles are destroyed intracellularly. Autophagy is postulated to be essential for cell homeostasis and cell remodeling during differentiation, metamorphosis, non-apoptotic cell death, and aging. Reduced levels of autophagy have been described in some malignant tumors, and a role for autophagy in controlling the unregulated cell growth linked to cancer has been proposed. APG4B encodes a member of the autophagin protein family and is also designated as a member of the C-54 family of cysteine proteases.</p> <p>Alias Symbols: APG4B, AUTL1</p> <p>Protein Interaction Partner: SUMO2, MAP1LC3B, MAP1LC3A, BAG3, ATG8, YWHAB, GABARAPL1, SQSTM1, UBC, GABARAPL2, ATG10, ATG3, AMBRA1, GABARAP, CAMKK2, ATG12, ULK1, STK3, KRT4, ANXA1, FBXW11, LINC00341,</p> <p>Protein Size: 393</p>
Molecular Weight:	44 kDa
Gene ID:	23192
NCBI Accession:	NM_013325 , NP_037457
UniProt:	Q9Y4P1
Pathways:	Autophagy

Application Details

Application Notes:	Optimal working dilutions should be determined experimentally by the investigator.
Comment:	Antigen size: 393 AA
Restrictions:	For Research Use only

Handling

Format:	Liquid
Concentration:	Lot specific
Buffer:	Liquid. Purified antibody supplied in 1x PBS buffer with 0.09 % (w/v) sodium azide and 2 % sucrose.
Preservative:	Sodium azide
Precaution of Use:	This product contains Sodium azide: a POISONOUS AND HAZARDOUS SUBSTANCE which

Handling

should be handled by trained staff only.

Handling Advice: Avoid repeated freeze-thaw cycles.

Storage: -20 °C

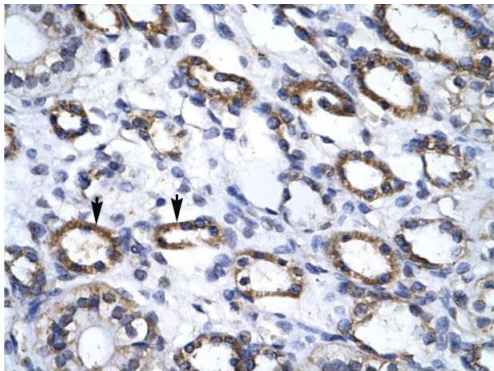
Storage Comment: For short term use, store at 2-8°C up to 1 week. For long term storage, store at -20°C in small aliquots to prevent freeze-thaw cycles.

Images



Western Blotting

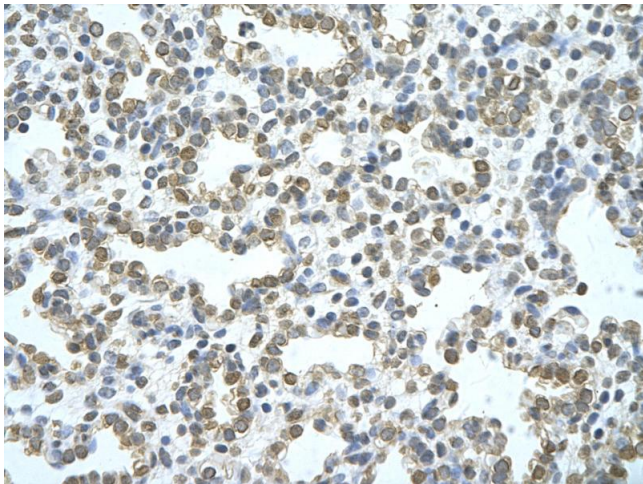
Image 1. WB Suggested Anti-APG4B Antibody Titration: 0.2-1 ug/ml ELISA Titer: 1:12500 Positive Control: Raji cell lysate
ATG4B is strongly supported by BioGPS gene expression data to be expressed in Human Raji cells



Immunohistochemistry

Image 2. Human kidney

Rabbit Anti-APG4B Antibody
Catalog Number: ARP34434
Lot Number: QC4222
Paraffin Embedded Tissue: Human Kidney
Cells with Positive label: Epithelial cells of renal tubule (Indicated with Arrows)
Antibody Concentration: 4.0-8.0 µg/ml
Magnification: 400X



Immunohistochemistry

Image 3. Rabbit Anti-ATG4B Antibody Paraffin Embedded
Tissue: Human alveolar cell Cellular Data: Epithelial cells of renal tubule Antibody Concentration: 4.0-8.0 ug/ml
Magnification: 400X