



[Go to Product page](#)

Datasheet for ABIN2775796  
**anti-ZMYM5 antibody (N-Term)**

1 Image

Overview

Quantity:	100 µL
Target:	ZMYM5
Binding Specificity:	N-Term
Reactivity:	Human, Cow, Guinea Pig
Host:	Rabbit
Clonality:	Polyclonal
Conjugate:	This ZMYM5 antibody is un-conjugated
Application:	Western Blotting (WB)

Product Details

Immunogen:	The immunogen is a synthetic peptide directed towards the N terminal region of human ZNF237
Sequence:	DIGDSFGHPA CPLVSRSRNS PVEDDDDDDD VVFIESIQPP SISAPAIADQ
Predicted Reactivity:	Cow: 79%, Guinea Pig: 79%, Human: 100%
Characteristics:	This is a rabbit polyclonal antibody against ZNF237. It was validated on Western Blot using a cell lysate as a positive control.
Purification:	Protein A purified

Target Details

Target:	ZMYM5
---------	-------

## Target Details

---

Alternative Name:	ZNF237 ( <a href="#">ZMYM5 Products</a> )
Background:	ZNF237 is a candidate transcription factor. Alias Symbols: MYM, ZNF237, HSPC050, ZNF198L1 Protein Interaction Partner: SUMO1, PRMT1, SUMO2, APP, SNIP1, SKIL, Protein Size: 382
Molecular Weight:	42 kDa
Gene ID:	9205
UniProt:	<a href="#">Q5T6E2</a>

## Application Details

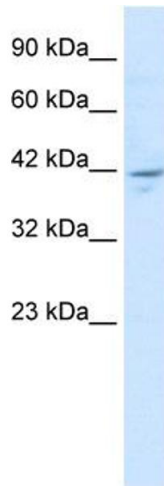
---

Application Notes:	Optimal working dilutions should be determined experimentally by the investigator.
Comment:	Antigen size: 382 AA
Restrictions:	For Research Use only

## Handling

---

Format:	Liquid
Concentration:	Lot specific
Buffer:	Liquid. Purified antibody supplied in 1x PBS buffer with 0.09 % (w/v) sodium azide and 2 % sucrose.
Preservative:	Sodium azide
Precaution of Use:	This product contains Sodium azide: a POISONOUS AND HAZARDOUS SUBSTANCE which should be handled by trained staff only.
Handling Advice:	Avoid repeated freeze-thaw cycles.
Storage:	-20 °C
Storage Comment:	For short term use, store at 2-8°C up to 1 week. For long term storage, store at -20°C in small aliquots to prevent freeze-thaw cycles.



### Western Blotting

**Image 1.** WB Suggested Anti-ZNF237 Antibody Titration:  
1.25ug/ml ELISA Titer: 1:312500 Positive Control: HepG2  
cell lysate