

Datasheet for ABIN2775800
anti-YBX2 antibody (Middle Region)



[Go to Product page](#)

2 Images

Overview

Quantity:	100 µL
Target:	YBX2
Binding Specificity:	Middle Region
Reactivity:	Human, Mouse, Rat, Cow, Guinea Pig, Dog, Horse, Rabbit
Host:	Rabbit
Clonality:	Polyclonal
Conjugate:	This YBX2 antibody is un-conjugated
Application:	Western Blotting (WB), Immunohistochemistry (IHC)

Product Details

Immunogen:	The immunogen is a synthetic peptide directed towards the middle region of human YBX2
Sequence:	RKSRRFIPRP PSVAPPPMVA EIPSAGTGPG SKGERAEDSG QRPRRWCPPP
Predicted Reactivity:	Cow: 86%, Dog: 86%, Guinea Pig: 86%, Horse: 86%, Human: 100%, Mouse: 86%, Rabbit: 86%, Rat: 86%
Characteristics:	This is a rabbit polyclonal antibody against YBX2. It was validated on Western Blot and immunohistochemistry.
Purification:	Protein A purified

Target Details

Target:	YBX2
---------	------

Target Details

Alternative Name:	YBX2 (YBX2 Products)
Background:	<p>YBX2 is a member of the Y box multigene family of proteins, it contains the cold shock domain that is highly conserved among all Y box proteins and four basic/aromatic islands. By Northern blotting and immunoblotting, MSY2 appears to be a germ cell-specific protein in the testis. In the ovary, MSY2 is present exclusively in diplotene-stage and mature oocytes. MSY2 is maternally inherited in the one-cell-stage embryo but is not detected in the late two-cell-stage embryo. This loss of MSY2 is coincident with the bulk degradation of maternal mRNAs in the two-cell embryo.</p> <p>Alias Symbols: DBPC, MSY2, CSDA3, CONTRIN</p> <p>Protein Interaction Partner: IGSF8, HDAC11, ICAM1, UBC,</p> <p>Protein Size: 364</p>
Molecular Weight:	39 kDa
Gene ID:	51087
NCBI Accession:	NM_015982 , NP_057066
UniProt:	Q9Y2T7
Pathways:	Chromatin Binding

Application Details

Application Notes:	Optimal working dilutions should be determined experimentally by the investigator.
Comment:	Antigen size: 364 AA
Restrictions:	For Research Use only

Handling

Format:	Liquid
Concentration:	Lot specific
Buffer:	Liquid. Purified antibody supplied in 1x PBS buffer with 0.09 % (w/v) sodium azide and 2 % sucrose.
Preservative:	Sodium azide
Precaution of Use:	This product contains Sodium azide: a POISONOUS AND HAZARDOUS SUBSTANCE which should be handled by trained staff only.

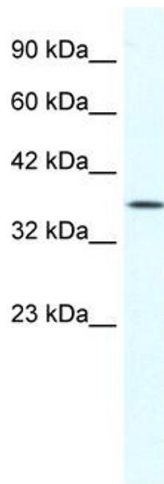
Handling

Handling Advice: Avoid repeated freeze-thaw cycles.

Storage: -20 °C

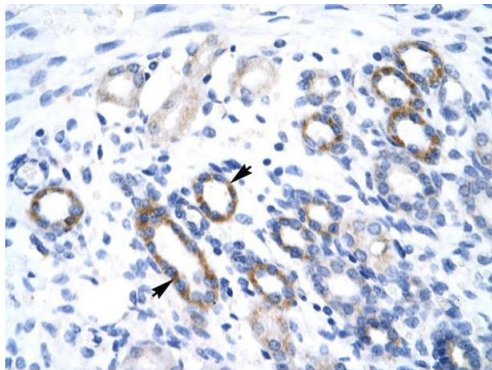
Storage Comment: For short term use, store at 2-8°C up to 1 week. For long term storage, store at -20°C in small aliquots to prevent freeze-thaw cycles.

Images



Western Blotting

Image 1. WB Suggested Anti-YBX2 Antibody Titration: 1.0ug/ml ELISA Titer: 1:12500 Positive Control: HepG2 cell lysate



Rabbit Anti-YBX2 Antibody
Catalog Number: ARP34450
Lot Number: QC3670
Paraffin Embedded Tissue: Human Kidney
Cells with Positive label: Epithelial cells of renal tubule (Indicated with Arrows)
Antibody Concentration: 4.0-8.0 µg/ml
Magnification: 400X

Immunohistochemistry

Image 2. Human kidney