



[Go to Product page](#)

Datasheet for ABIN2775809

anti-ZFAND6 antibody (Middle Region)

2 Images

1 Publication

Overview

Quantity:	100 µL
Target:	ZFAND6
Binding Specificity:	Middle Region
Reactivity:	Human, Dog, Mouse, Rat, Cow, Guinea Pig, Horse, Rabbit, Pig
Host:	Rabbit
Clonality:	Polyclonal
Conjugate:	This ZFAND6 antibody is un-conjugated
Application:	Western Blotting (WB), Immunohistochemistry (IHC)

Product Details

Immunogen:	The immunogen is a synthetic peptide directed towards the middle region of human ZA20D3
Sequence:	SDTAQPSEE QSKSLEKPKQ KKNRCFMCRK KVGLTGFECD CGNVYCGVHR
Predicted Reactivity:	Cow: 100%, Dog: 100%, Guinea Pig: 93%, Horse: 93%, Human: 100%, Mouse: 100%, Pig: 100%, Rabbit: 93%, Rat: 100%
Characteristics:	This is a rabbit polyclonal antibody against ZA20D3. It was validated on Western Blot and immunohistochemistry.
Purification:	Protein A purified

Target Details

Target:	ZFAND6
---------	--------

Target Details

Alternative Name:	ZA20D3 (ZFAND6 Products)
Background:	ZA20D3 is a zinc-finger protein located on chromosome 15. Alias Symbols: AWP1, ZA20D3, ZFAND5B Protein Interaction Partner: TRAF5, PPP2R1A, UBC, TRAF2, WIPI2, USP3, CDC34, DNM2, PKN1, Protein Size: 208
Molecular Weight:	23 kDa
Gene ID:	54469
NCBI Accession:	NM_019006 , NP_061879
UniProt:	Q6FIF0

Application Details

Application Notes:	Optimal working dilutions should be determined experimentally by the investigator.
Comment:	Antigen size: 208 AA
Restrictions:	For Research Use only

Handling

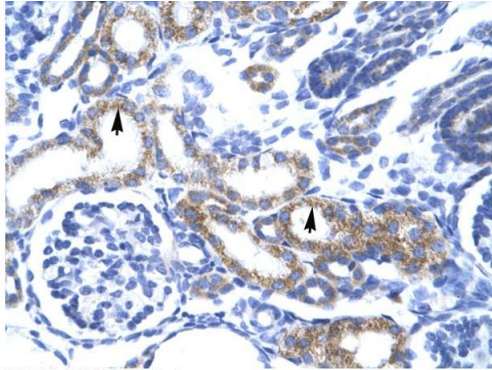
Format:	Liquid
Concentration:	Lot specific
Buffer:	Liquid. Purified antibody supplied in 1x PBS buffer with 0.09 % (w/v) sodium azide and 2 % sucrose.
Preservative:	Sodium azide
Precaution of Use:	This product contains Sodium azide: a POISONOUS AND HAZARDOUS SUBSTANCE which should be handled by trained staff only.
Handling Advice:	Avoid repeated freeze-thaw cycles.
Storage:	-20 °C
Storage Comment:	For short term use, store at 2-8°C up to 1 week. For long term storage, store at -20°C in small aliquots to prevent freeze-thaw cycles.

Publications

Product cited in: Mehrle, Rosenfelder, Schupp, del Val, Arlt, Hahne, Bechtel, Simpson, Hofmann, Hide, Glatting,

Huber, Pepperkok, Poustka, Wiemann: "The LIFEdb database in 2006." in: **Nucleic acids research**, Vol. 34, Issue Database issue, pp. D415-8, (2005) ([PubMed](#)).

Images



Rabbit Anti-ZA20D3 Antibody
Catalog Number: ARP34464
Lot Number: QC3677
Paraffin Embedded Tissue: Human Kidney
Cells with Positive label: Epithelial cells of renal tubule (Indicated with Arrows)
Antibody Concentration: 4.0-8.0 µg/ml
Magnification: 400X

Immunohistochemistry

Image 1. Human kidney



Western Blotting

Image 2. WB Suggested Anti-ZA20D3 Antibody Titration: 2.5ug/ml ELISA Titer: 1:62500 Positive Control: Jurkat cell lysate ZFAND6 is supported by BioGPS gene expression data to be expressed in Jurkat