



[Go to Product page](#)

Datasheet for ABIN2775816  
**anti-TFB2M antibody (N-Term)**

2 Images

Overview

Quantity:	100 µL
Target:	TFB2M
Binding Specificity:	N-Term
Reactivity:	Human, Rat, Horse, Rabbit
Host:	Rabbit
Clonality:	Polyclonal
Conjugate:	This TFB2M antibody is un-conjugated
Application:	Western Blotting (WB), Immunohistochemistry (IHC)

Product Details

Immunogen:	The immunogen is a synthetic peptide directed towards the N terminal region of human TFB2M
Sequence:	ECNPGPGILT QALLEAGAKV VALESDKTFI PHLESLGKNL DGKLRVIHCD
Predicted Reactivity:	Horse: 100%, Human: 100%, Rabbit: 83%, Rat: 85%
Characteristics:	This is a rabbit polyclonal antibody against TFB2M. It was validated on Western Blot and immunohistochemistry.
Purification:	Protein A purified

Target Details

Target:	TFB2M
Alternative Name:	TFB2M ( <a href="#">TFB2M Products</a> )

## Target Details

---

**Background:** TFB2M is a S-adenosyl-L-methionine-dependent methyltransferase which specifically dimethylates mitochondrial 12S rRNA at the conserved stem loop. It is also required for basal transcription of mitochondrial DNA, probably via its interaction with POLRMT and TFAM. It stimulates transcription independently of the methyltransferase activity. Compared to TFB1M, it activates transcription of mitochondrial DNA more efficiently, while it has less methyltransferase activity.

Alias Symbols: FLJ22661, FLJ23182, Hkp1, mtTFB2

Protein Interaction Partner: UBC, FBXO6, C1QBP, CUL3, TFB2M, POLRMT, TFAM, PNP,

Protein Size: 396

---

**Molecular Weight:** 45 kDa

---

**Gene ID:** 64216

---

**NCBI Accession:** [NM\\_022366](#), [NP\\_071761](#)

---

**UniProt:** [Q9H5Q4](#)

---

## Application Details

---

**Application Notes:** Optimal working dilutions should be determined experimentally by the investigator.

---

**Comment:** Antigen size: 396 AA

---

**Restrictions:** For Research Use only

---

## Handling

---

**Format:** Liquid

---

**Concentration:** Lot specific

---

**Buffer:** Liquid. Purified antibody supplied in 1x PBS buffer with 0.09 % (w/v) sodium azide and 2 % sucrose.

---

**Preservative:** Sodium azide

---

**Precaution of Use:** This product contains Sodium azide: a POISONOUS AND HAZARDOUS SUBSTANCE which should be handled by trained staff only.

---

**Handling Advice:** Avoid repeated freeze-thaw cycles.

---

**Storage:** -20 °C

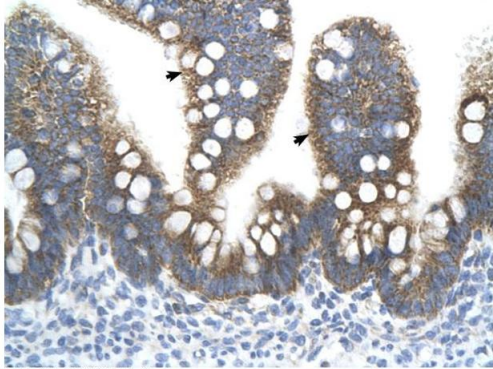
---

**Storage Comment:** For short term use, store at 2-8°C up to 1 week. For long term storage, store at -20°C in small

---

aliquots to prevent freeze-thaw cycles.

Images



Rabbit Anti-TFB2M Antibody  
Catalog Number: ARP34471  
Lot Number: QC3806  
Paraffin Embedded Tissue: Human Intestine  
Cells with Positive label: Epithelial cells of intestinal villus (Indicated with Arrows)  
Antibody Concentration: 4.0-8.0 µg/ml  
Magnification: 400X



Immunohistochemistry

Image 1. Human Intestine

Western Blotting

Image 2. WB Suggested Anti-TFB2M Antibody Titration:  
1.25ug/ml ELISA Titer: 1:312500 Positive Control:  
Transfected 293T