

Datasheet for ABIN2775819  
**anti-BTBD1 antibody (N-Term)**[Go to Product page](#)

4 Images

1 Publication

## Overview

Quantity:	100 µL
Target:	BTBD1
Binding Specificity:	N-Term
Reactivity:	Human, Mouse, Rat, Cow, Guinea Pig
Host:	Rabbit
Clonality:	Polyclonal
Conjugate:	This BTBD1 antibody is un-conjugated
Application:	Western Blotting (WB)

## Product Details

Immunogen:	The immunogen is a synthetic peptide directed towards the N terminal region of human BTBD1
Sequence:	LPLQREPLYN WQATKASLKE RFAFLFNSEL LSDVRFVLGK GRGAAAAGGP
Predicted Reactivity:	Cow: 100%, Guinea Pig: 100%, Human: 100%, Mouse: 100%, Rat: 100%
Characteristics:	This is a rabbit polyclonal antibody against BTBD1. It was validated on Western Blot using a cell lysate as a positive control.
Purification:	Affinity Purified

## Target Details

Target:	BTBD1
Alternative Name:	BTBD1 ( <a href="#">BTBD1 Products</a> )

## Target Details

Background:	<p>The C-terminus of BTBD1 binds topoisomerase I. The N-terminus contains a proline-rich region and a BTB/POZ domain (broad-complex, Tramtrack and bric a brac/Pox virus and Zinc finger), both of which are typically involved in protein-protein interactions. Subcellularly, the protein localizes to cytoplasmic bodies. The C-terminus of the protein encoded by this gene binds topoisomerase I. The N-terminus contains a proline-rich region and a BTB/POZ domain (broad-complex, Tramtrack and bric a brac/Pox virus and Zinc finger), both of which are typically involved in protein-protein interactions. Subcellularly, the protein localizes to cytoplasmic bodies. Alternative splicing results in multiple transcript variants encoding different isoforms.</p> <p>Alias Symbols: C15orf1, NS5ATP8</p> <p>Protein Interaction Partner: CUL3, LRR1, FMOD, NEDD8, COPS4, COPS5, COPS3, UBC, TOP1, COPS6, CUL5, SUMO1, TRIM5,</p> <p>Protein Size: 482</p>
Molecular Weight:	53 kDa
Gene ID:	53339
NCBI Accession:	<a href="#">NM_025238</a> , <a href="#">NP_079514</a>
UniProt:	<a href="#">Q9H0C5</a>

## Application Details

Application Notes:	Optimal working dilutions should be determined experimentally by the investigator.
Comment:	Antigen size: 482 AA
Restrictions:	For Research Use only

## Handling

Format:	Liquid
Concentration:	Lot specific
Buffer:	Liquid. Purified antibody supplied in 1x PBS buffer with 0.09 % (w/v) sodium azide and 2 % sucrose.
Preservative:	Sodium azide
Precaution of Use:	This product contains Sodium azide: a POISONOUS AND HAZARDOUS SUBSTANCE which should be handled by trained staff only.
Handling Advice:	Avoid repeated freeze-thaw cycles.

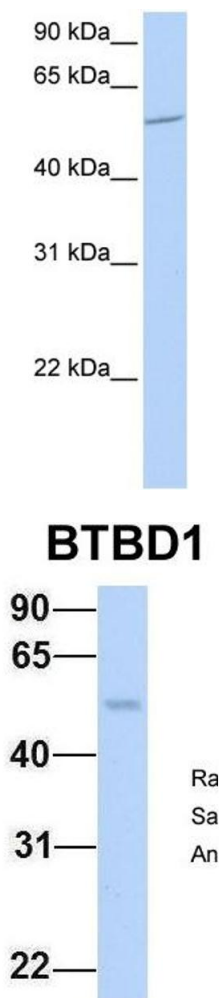
Handling

Storage:	-20 °C
Storage Comment:	For short term use, store at 2-8°C up to 1 week. For long term storage, store at -20°C in small aliquots to prevent freeze-thaw cycles.

Publications

Product cited in:	Braun, Sponder, Pieper, Aschenbach, Deiner: "GABA selectively increases mucin-1 expression in isolated pig jejunum." in: <b>Genes &amp; nutrition</b> , Vol. 10, Issue 6, pp. 47, (2015) ( <a href="#">PubMed</a> ).
-------------------	--

Images

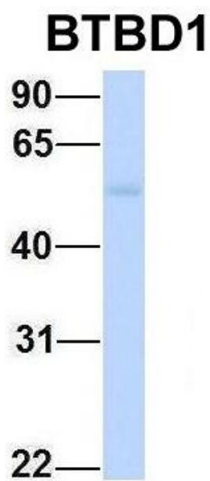


Western Blotting

**Image 1.** WB Suggested Anti-BTBD1 Antibody Titration: 0.2-1 ug/ml ELISA Titer: 1:312500 Positive Control: 721\_B cell lysate BTBD1 is supported by BioGPS gene expression data to be expressed in 721\_B

Western Blotting

**Image 2.** Host: Rabbit Target Name: BTBD1 Sample Type: Human Fetal Lung Antibody Dilution: 1.0ug/ml



**Western Blotting**

**Image 3.** Host: Rabbit Target Name: BTBD1 Sample Type:  
Human Adult Placenta Antibody Dilution: 1.0ug/ml

Please check the [product details page](#) for more images. Overall 4 images are available for ABIN2775819.