

Datasheet for ABIN2775831  
**anti-SCML4 antibody (N-Term)**[Go to Product page](#)

## 1 Image

## Overview

Quantity:	100 µL
Target:	SCML4
Binding Specificity:	N-Term
Reactivity:	Human, Mouse, Rabbit, Horse, Pig, Rat, Dog, Cow
Host:	Rabbit
Clonality:	Polyclonal
Conjugate:	This SCML4 antibody is un-conjugated
Application:	Western Blotting (WB)

## Product Details

Immunogen:	The immunogen is a synthetic peptide directed towards the N terminal region of human SCML4
Sequence:	EPDLSSIPQD AATVPSLAAP QALTVCLYIN KQANAGPYLE RKKVQQLPEH
Predicted Reactivity:	Cow: 93%, Dog: 93%, Horse: 86%, Human: 100%, Mouse: 79%, Pig: 93%, Rabbit: 86%, Rat: 86%
Characteristics:	This is a rabbit polyclonal antibody against SCML4. It was validated on Western Blot using a cell lysate as a positive control.
Purification:	Affinity Purified

## Target Details

Target:	SCML4
Alternative Name:	SCML4 ( <a href="#">SCML4 Products</a> )

## Target Details

Background: SCML4 is a putative Polycomb group (PcG) protein. PcG proteins act by forming multiprotein complexes, which are required to maintain the transcriptionally repressive state of homeotic genes throughout development.

Alias Symbols: FLJ36252, dJ47M23.1

Protein Size: 414

Molecular Weight: 45 kDa

Gene ID: 256380

NCBI Accession: [NM\\_198081](#), [NP\\_932347](#)

UniProt: [Q8N228](#)

## Application Details

Application Notes: Optimal working dilutions should be determined experimentally by the investigator.

Comment: Antigen size: 414 AA

Restrictions: For Research Use only

## Handling

Format: Liquid

Concentration: Lot specific

Buffer: Liquid. Purified antibody supplied in 1x PBS buffer with 0.09 % (w/v) sodium azide and 2 % sucrose.

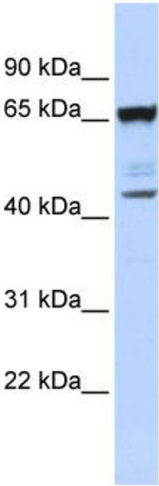
Preservative: Sodium azide

Precaution of Use: This product contains Sodium azide: a POISONOUS AND HAZARDOUS SUBSTANCE which should be handled by trained staff only.

Handling Advice: Avoid repeated freeze-thaw cycles.

Storage: -20 °C

Storage Comment: For short term use, store at 2-8°C up to 1 week. For long term storage, store at -20°C in small aliquots to prevent freeze-thaw cycles.



Western Blotting

**Image 1.** WB Suggested Anti-SCML4 Antibody Titration:  
0.2-1 ug/ml ELISA Titer: 1:1562500 Positive Control:  
OVCAR-3 cell lysate