

Datasheet for ABIN2775852
anti-ZFR antibody (Middle Region)[Go to Product page](#)

5 Images

Overview

Quantity:	100 µL
Target:	ZFR
Binding Specificity:	Middle Region
Reactivity:	Human, Mouse, Rat, Dog, Rabbit, Zebrafish (Danio rerio), Cow, Horse
Host:	Rabbit
Clonality:	Polyclonal
Conjugate:	This ZFR antibody is un-conjugated
Application:	Western Blotting (WB), Immunohistochemistry (IHC)

Product Details

Immunogen:	The immunogen is a synthetic peptide directed towards the middle region of human ZFR
Sequence:	RQIHKVLGMD PLPQMSQRFN IHNNRKRRRD SDGVDGFEE GKKDKKDYDN
Predicted Reactivity:	Cow: 100%, Dog: 100%, Horse: 100%, Human: 100%, Mouse: 100%, Rabbit: 100%, Rat: 100%, Zebrafish: 100%
Characteristics:	This is a rabbit polyclonal antibody against ZFR. It was validated on Western Blot using a cell lysate as a positive control.
Purification:	Affinity Purified

Target Details

Target:	ZFR
---------	-----

Target Details

Alternative Name:	ZFR (ZFR Products)
Background:	<p>ZFR is critical for Staufen 2 isoform specific nucleocytoplasmic shuttling in neurons.</p> <p>Alias Symbols: FLJ41312, ZFR1</p> <p>Protein Interaction Partner: UBC, SUMO2, STAU1, ADARB1, RPA3, RPA2, RPA1, RNF2, BMI1, TARDBP, HDAC11, Dlg4, CBX8, WHSC1, VCP, VPS25, USP48, UBAP2, VPS29, DYNC1LI1, THUMPD3, ACAA2, SF1, VDAC2, THY1, S100A10, QARS, PRDX1, HADHA, SERPINH1, ATP6V1E1, COPS5, CUL3, CAND1, HNRNPA1, SIRT7, E</p> <p>Protein Size: 1074</p>
Molecular Weight:	117 kDa
Gene ID:	51663
NCBI Accession:	NM_016107 , NP_057191
UniProt:	Q96KR1

Application Details

Application Notes:	Optimal working dilutions should be determined experimentally by the investigator.
Comment:	Antigen size: 1074 AA
Restrictions:	For Research Use only

Handling

Format:	Liquid
Concentration:	Lot specific
Buffer:	Liquid. Purified antibody supplied in 1x PBS buffer with 0.09 % (w/v) sodium azide and 2 % sucrose.
Preservative:	Sodium azide
Precaution of Use:	This product contains Sodium azide: a POISONOUS AND HAZARDOUS SUBSTANCE which should be handled by trained staff only.
Handling Advice:	Avoid repeated freeze-thaw cycles.
Storage:	-20 °C
Storage Comment:	For short term use, store at 2-8°C up to 1 week. For long term storage, store at -20°C in small aliquots to prevent freeze-thaw cycles.



Western Blotting

Image 1. WB Suggested Anti-ZFR

Antibody Titration: 0.2-1 µg/mL ELISA Titer: 1:2500

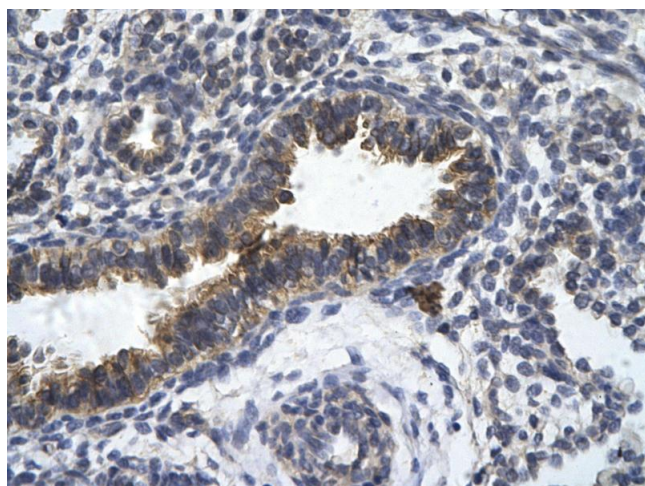
Positive Control: HT1080 cell lysate

ZFR is strongly supported by BioGPS gene expression data to be expressed in Human HT1080 cells

Western Blotting

Image 2. WB Suggested Anti-ZFR Antibody Titration: 0.2-1

ug/ml ELISA Titer: 1:62500 Positive Control: HT1080 cell lysate ZFR is strongly supported by BioGPS gene expression data to be expressed in Human HT1080 cells



Immunohistochemistry

Image 3. Rabbit Anti-ZFR Antibody Paraffin Embedded

Tissue: Human bronchiole epithelium Cellular Data: Epithelial cells of renal tubule Antibody Concentration: 4.0-8.0 ug/ml Magnification: 400X

Please check the [product details page](#) for more images. Overall 5 images are available for ABIN2775852.