

Datasheet for ABIN2775855  
**anti-LARP1B antibody (Middle Region)**[Go to Product page](#)

## 2 Images

## Overview

Quantity:	100 µL
Target:	LARP1B
Binding Specificity:	Middle Region
Reactivity:	Human, Mouse, Rat, Dog, Cow, Guinea Pig, Horse, Rabbit, Zebrafish (Danio rerio)
Host:	Rabbit
Clonality:	Polyclonal
Conjugate:	This LARP1B antibody is un-conjugated
Application:	Western Blotting (WB), Immunohistochemistry (IHC)

## Product Details

Immunogen:	The immunogen is a synthetic peptide directed towards the middle region of human LARP2
Sequence:	RNTRTPRTPR TPQLKDSSQT SRFYPVVKEG RTLDAKMPRK RKTRHSSNPP
Predicted Reactivity:	Cow: 100%, Dog: 100%, Guinea Pig: 100%, Horse: 100%, Human: 100%, Mouse: 93%, Rabbit: 100%, Rat: 100%, Zebrafish: 79%
Characteristics:	This is a rabbit polyclonal antibody against LARP2. It was validated on Western Blot and immunohistochemistry.
Purification:	Protein A purified

## Target Details

Target:	LARP1B
---------	--------

## Target Details

Alternative Name:	LARP2 ( <a href="#">LARP1B Products</a> )
Background:	<p>LARP2 encodes a protein containing domains found in the La related protein of Drosophila melanogaster. La motif-containing proteins are thought to be RNA-binding proteins, where the La motif and adjacent amino acids fold into an RNA recognition motif. The La motif is also found in proteins unrelated to the La protein. Alternative splicing has been observed at this locus and three variants, encoding distinct isoforms, are described.</p> <p>Alias Symbols: LARP, LARP2</p> <p>Protein Interaction Partner: CCDC155, AURKA, IVNS1ABP, UBC, LIN28A, SUZ12, RNF2, EZH2, EIF3L, EIF3K, EIF3C, EIF3A, RPS3A, RPS29, RPS18, RPS16, RPS14, RPS13, RPS12, RPS10, RPS9, RPS8, RPS5, RPS4X, RPS3, EIF3E, TARDBP, YWHAB, SRPK1, CLK3, YWHAE, SOX2, ITGA4, CSNK2A1, BARD1, PAXIP1, ECT</p> <p>Protein Size: 1019</p>
Molecular Weight:	116 kDa
Gene ID:	23367
NCBI Accession:	<a href="#">NM_015315</a> , <a href="#">NP_056130</a>
UniProt:	<a href="#">Q6PKG0</a>

## Application Details

Application Notes:	Optimal working dilutions should be determined experimentally by the investigator.
Comment:	Antigen size: 1019 AA
Restrictions:	For Research Use only

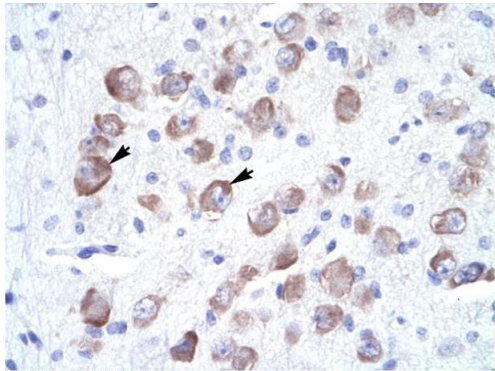
## Handling

Format:	Liquid
Concentration:	Lot specific
Buffer:	Liquid. Purified antibody supplied in 1x PBS buffer with 0.09 % (w/v) sodium azide and 2 % sucrose.
Preservative:	Sodium azide
Precaution of Use:	This product contains Sodium azide: a POISONOUS AND HAZARDOUS SUBSTANCE which should be handled by trained staff only.
Handling Advice:	Avoid repeated freeze-thaw cycles.

# Handling

Storage:	-20 °C
Storage Comment:	For short term use, store at 2-8°C up to 1 week. For long term storage, store at -20°C in small aliquots to prevent freeze-thaw cycles.

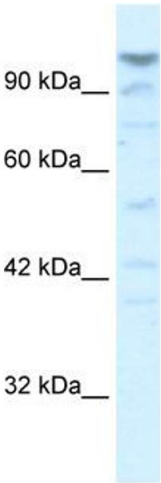
# Images



Rabbit Anti-LARP1 Antibody  
Catalog Number: ARP34532  
Lot Number: QC3939  
Paraffin Embedded Tissue: Human Brain  
Cells with Positive label: Neural cells (Indicated with Arrows)  
Antibody Concentration: 4.0-8.0 µg/ml  
Magnification: 400X

## Immunohistochemistry

**Image 1.** Human Brain



## Western Blotting

**Image 2.** WB Suggested Anti-LAntibody Titration: 5.0ug/ml  
ELISA Titer: 1:62500 Positive Control: HepG2 cell lysate  
Lis strongly supported by BioGPS gene expression data to be expressed in Human HepG2 cells