

Datasheet for ABIN2775859
anti-TFB1M antibody (N-Term)[Go to Product page](#)

4 Images

Overview

Quantity:	100 µL
Target:	TFB1M
Binding Specificity:	N-Term
Reactivity:	Human, Rat, Dog, Cow, Guinea Pig, Zebrafish (Danio rerio), Horse, Rabbit
Host:	Rabbit
Clonality:	Polyclonal
Conjugate:	This TFB1M antibody is un-conjugated
Application:	Western Blotting (WB), Immunohistochemistry (IHC)

Product Details

Immunogen:	The immunogen is a synthetic peptide directed towards the N terminal region of human TFB1M
Sequence:	NFLDLRLTD KIVRKAGNLT NAYVYEVGPG PGGITRSILN ADVAELLVVE
Predicted Reactivity:	Cow: 100%, Dog: 100%, Guinea Pig: 100%, Horse: 93%, Human: 100%, Rabbit: 93%, Rat: 100%, Zebrafish: 85%
Characteristics:	This is a rabbit polyclonal antibody against TFB1M. It was validated on Western Blot using a cell lysate as a positive control.
Purification:	Affinity Purified

Target Details

Target:	TFB1M
---------	-------

Target Details

Alternative Name:	TFB1M (TFB1M Products)
Background:	<p>The transcription of genes from mitochondrial DNA requires a mitochondrial RNA polymerase and a DNA-binding transcription factor. Transcription factor B1 (TFB1M) is a part of this transcription complex. The transcription of genes from mitochondrial DNA requires a mitochondrial RNA polymerase (see POLRMT, MIM 601778) and a DNA-binding transcription factor (see TFAM, MIM 600438). Transcription factor B1 (TFB1M) is a part of this transcription complex.[supplied by OMIM].</p> <p>Alias Symbols: CGI-75, CGI75, mtTFB, mtTFB1</p> <p>Protein Interaction Partner: SUMO2, CAND1, UBC, TFB1M, POLRMT, TFAM,</p> <p>Protein Size: 346</p>
Molecular Weight:	39 kDa
Gene ID:	51106
NCBI Accession:	NM_016020 , NP_057104
UniProt:	Q8WVM0

Application Details

Application Notes:	Optimal working dilutions should be determined experimentally by the investigator.
Comment:	Antigen size: 346 AA
Restrictions:	For Research Use only

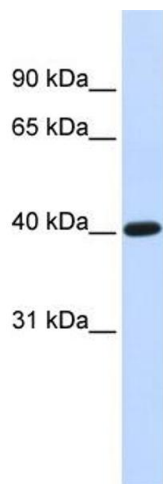
Handling

Format:	Liquid
Concentration:	Lot specific
Buffer:	Liquid. Purified antibody supplied in 1x PBS buffer with 0.09 % (w/v) sodium azide and 2 % sucrose.
Preservative:	Sodium azide
Precaution of Use:	This product contains Sodium azide: a POISONOUS AND HAZARDOUS SUBSTANCE which should be handled by trained staff only.
Handling Advice:	Avoid repeated freeze-thaw cycles.
Storage:	-20 °C

Handling

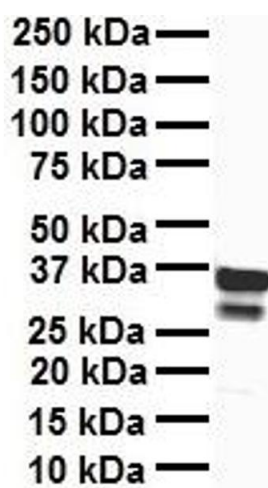
Storage Comment: For short term use, store at 2-8°C up to 1 week. For long term storage, store at -20°C in small aliquots to prevent freeze-thaw cycles.

Images



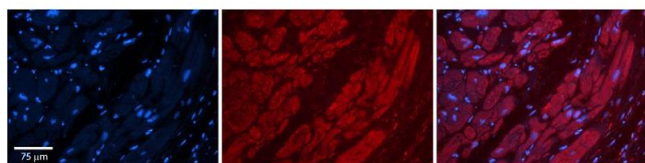
Western Blotting

Image 1. WB Suggested Anti-TFB1M Antibody Titration: 0.2-1 ug/ml ELISA Titer: 1:312500 Positive Control: Human Liver



Western Blotting

Image 2. WB Suggested Anti-TFB1M antibody Titration: 1 ug/mL Sample Type: Human liver



Immunohistochemistry

Image 3. Rabbit Anti-TFB1M Antibody Formalin Fixed Paraffin Embedded Tissue: Human Adult heart Observed Staining: Cytoplasmic Primary Antibody Concentration: 1:600 Secondary Antibody: Donkey anti-Rabbit-Cy2/3 Secondary Antibody Concentration: 1:200 Magnification: 20X Exposure Time: 0.5 – 2.0 sec Protocol located in Reviews and Data.

Please check the [product details page](#) for more images. Overall 4 images are available for ABIN2775859.