

Datasheet for ABIN2775860  
**anti-TFB1M antibody (Middle Region)**



[Go to Product page](#)

2 Images

## Overview

|                      |   |
|----------------------|---|
| Quantity:            | 100 µL  |
| Target:              | TFB1M   |
| Binding Specificity: | Middle Region   |
| Reactivity:          | Human, Dog, Rat, Cow, Guinea Pig, Mouse, Horse, Zebrafish (Danio rerio), Rabbit |
| Host:                | Rabbit  |
| Clonality:           | Polyclonal  |
| Conjugate:           | This TFB1M antibody is un-conjugated  |
| Application:         | Western Blotting (WB)   |

## Product Details

|                       |   |
|-----------------------|---|
| Immunogen:            | The immunogen is a synthetic peptide directed towards the middle region of human TFB1M  |
| Sequence:             | IIKWLENISC RDGPFVYGR T QMTLTFQKEV AERLAANTGS KQRSRLSVMA   |
| Predicted Reactivity: | Cow: 86%, Dog: 93%, Guinea Pig: 86%, Horse: 86%, Human: 100%, Mouse: 86%, Rabbit: 93%, Rat: 86%, Zebrafish: 79%                 |
| Characteristics:      | This is a rabbit polyclonal antibody against TFB1M. It was validated on Western Blot using a cell lysate as a positive control. |
| Purification:         | Protein A purified  |

## Target Details

|         |       |
|---------|-------|
| Target: | TFB1M |
|---------|-------|

## Target Details

---

|                   |   |
|-------------------|---|
| Alternative Name: | TFB1M ( <a href="#">TFB1M Products</a> )  |
| Background:       | <p>The transcription of genes from mitochondrial DNA requires a mitochondrial RNA polymerase and a DNA-binding transcription factor. Transcription factor B1 (TFB1M) is a part of this transcription complex. The transcription of genes from mitochondrial DNA requires a mitochondrial RNA polymerase (see POLRMT, MIM 601778) and a DNA-binding transcription factor (see TFAM, MIM 600438). Transcription factor B1 (TFB1M) is a part of this transcription complex.[supplied by OMIM].</p> <p>Alias Symbols: CGI-75, CGI75, mtTFB, mtTFB1</p> <p>Protein Interaction Partner: SUMO2, CAND1, UBC, TFB1M, POLRMT, TFAM,</p> <p>Protein Size: 346</p> |
| Molecular Weight: | 39 kDa  |
| Gene ID:          | 51106   |
| NCBI Accession:   | <a href="#">NM_016020</a> , <a href="#">NP_057104</a>   |
| UniProt:          | <a href="#">Q8WVM0</a>  |

## Application Details

---

|                    |  |
|--------------------|--|
| Application Notes: | Optimal working dilutions should be determined experimentally by the investigator. |
| Comment:           | Antigen size: 346 AA   |
| Restrictions:      | For Research Use only  |

## Handling

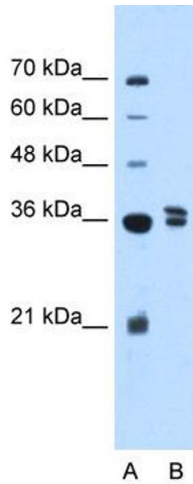
---

|                    |  |
|--------------------|--|
| Format:            | Liquid   |
| Concentration:     | Lot specific   |
| Buffer:            | Liquid. Purified antibody supplied in 1x PBS buffer with 0.09 % (w/v) sodium azide and 2 % sucrose.                    |
| Preservative:      | Sodium azide   |
| Precaution of Use: | This product contains Sodium azide: a POISONOUS AND HAZARDOUS SUBSTANCE which should be handled by trained staff only. |
| Handling Advice:   | Avoid repeated freeze-thaw cycles.   |
| Storage:           | -20 °C   |

## Handling

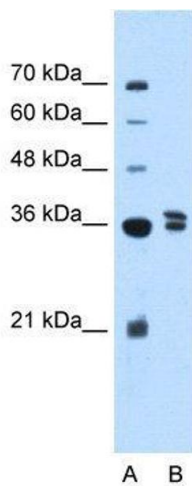
Storage Comment: For short term use, store at 2-8°C up to 1 week. For long term storage, store at -20°C in small aliquots to prevent freeze-thaw cycles.

## Images



### Western Blotting

**Image 1.** WB Suggested Anti-TFB1M Antibody Titration: 2.5ug/ml ELISA Titer: 1:312500 Positive Control: 721\_B cell lysate TFB1M is supported by BioGPS gene expression data to be expressed in 721\_B



### Western Blotting

**Image 2.** WB Suggested Anti-TFB1M Antibody Titration: 2.5 µg/mL ELISA Titer: 1:12500 Positive Control: 21\_B cell lysate TFB1M is supported by BioGPS gene expression data to be expressed in 721\_B