

Datasheet for ABIN2775861  
**anti-C14orf166 antibody (N-Term)**[2 Images](#)[1 Publication](#)[Go to Product page](#)

## Overview

Quantity:	100 µL
Target:	C14orf166
Binding Specificity:	N-Term
Reactivity:	Human, Mouse, Rat, Cow, Dog, Guinea Pig, Horse, Rabbit, Pig
Host:	Rabbit
Clonality:	Polyclonal
Conjugate:	This C14orf166 antibody is un-conjugated
Application:	Western Blotting (WB), Immunohistochemistry (IHC)

## Product Details

Immunogen:	The immunogen is a synthetic peptide directed towards the N terminal region of human C14orf166
Sequence:	GLAVRLEYGD NAEKYKDLVP DNSKTADNAT KNAEPLINLD VNNPDFKAGV
Predicted Reactivity:	Cow: 86%, Dog: 92%, Guinea Pig: 85%, Horse: 92%, Human: 100%, Mouse: 92%, Pig: 92%, Rabbit: 92%, Rat: 85%
Characteristics:	This is a rabbit polyclonal antibody against C14ORF166. It was validated on Western Blot using a cell lysate as a positive control.
Purification:	Affinity Purified

## Target Details

Target:	C14orf166
---------	-----------

## Target Details

Alternative Name:	C14orf166 ( <a href="#">C14orf166 Products</a> )
Background:	<p>The function of the C14orf266 gene has not yet been determined.</p> <p>Alias Symbols: CGI-99, CGI99, CLE, CLE7, LCRP369, RLLM1</p> <p>Protein Interaction Partner: FUS, FAM98A, HUWE1, UBC, RPA3, RPA2, RPA1, BMI1, rev, KRT18, ILF2, HNRNPU, FLII, FKBP3, DHX9, DDX1, ABCF1, RTCB, RPL26L1, IGF2BP3, SYNCRIP, LRRFIP1, EIF2B2, EIF2B3, YBX3, RFC4, RFC2, PRKDC, NMT1, MRE11A, GLP1R, BAG3, FN1, DAB2, NOTCH1, FAM98B, C2orf49, MC</p> <p>Protein Size: 244</p>
Molecular Weight:	28 kDa
Gene ID:	51637
NCBI Accession:	<a href="#">NM_016039</a> , <a href="#">NP_057123</a>
UniProt:	<a href="#">Q9Y224</a>

## Application Details

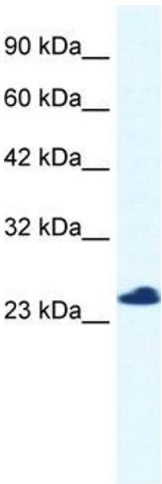
Application Notes:	Optimal working dilutions should be determined experimentally by the investigator.
Comment:	Antigen size: 244 AA
Restrictions:	For Research Use only

## Handling

Format:	Liquid
Concentration:	Lot specific
Buffer:	Liquid. Purified antibody supplied in 1x PBS buffer with 0.09 % (w/v) sodium azide and 2 % sucrose.
Preservative:	Sodium azide
Precaution of Use:	This product contains Sodium azide: a POISONOUS AND HAZARDOUS SUBSTANCE which should be handled by trained staff only.
Handling Advice:	Avoid repeated freeze-thaw cycles.
Storage:	-20 °C
Storage Comment:	For short term use, store at 2-8°C up to 1 week. For long term storage, store at -20°C in small aliquots to prevent freeze-thaw cycles.

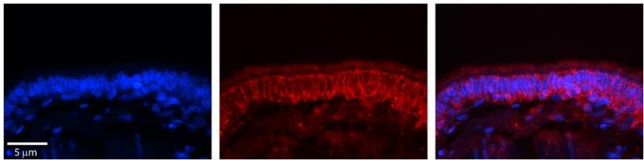
Product cited in: Ramsey, Clarke, Roberts, Sullivan, Johnson, Liu: "An economic evaluation of atorvastatin for primary prevention of cardiovascular events in type 2 diabetes." in: **Pharmacoeconomics**, Vol. 26, Issue 4, pp. 329-39, (2008) ([PubMed](#)).

Validation report #104256 for Western Blotting (WB)



Western Blotting

**Image 1.** WB Suggested Anti-C14orf166 Antibody Titration: 0.125ug/ml ELISA Titer: 1:312500 Positive Control: Jurkat cell lysate C14orf166 is supported by BioGPS gene expression data to be expressed in Jurkat



Immunohistochemistry

**Image 2.** Rabbit Anti-C14orf166 Antibody Formalin Fixed Paraffin Embedded Tissue: Human Bronchial Epithelial Tissue Observed Staining: Cytoplasmic Primary Antibody Concentration: 1:100 Secondary Antibody: Donkey anti-Rabbit-Cy3 Secondary Antibody Concentration: 1:200 Magnification: 20X Exposure Time: 0.5 - 2.0 sec