

Datasheet for ABIN2775876
anti-SETD4 antibody (C-Term)[Go to Product page](#)

3 Images

1 Publication

Overview

Quantity:	100 µL
Target:	SETD4
Binding Specificity:	C-Term
Reactivity:	Human, Mouse, Cow, Dog, Rabbit, Rat, Guinea Pig, Horse
Host:	Rabbit
Clonality:	Polyclonal
Conjugate:	This SETD4 antibody is un-conjugated
Application:	Western Blotting (WB)

Product Details

Immunogen:	The immunogen is a synthetic peptide directed towards the C terminal region of human C21ORF18
Sequence:	LTALKLLCLE AEKFTCWKKV LLGEVISDTN EKTSLDIAQK ICYYFIEETN
Predicted Reactivity:	Cow: 86%, Dog: 100%, Guinea Pig: 100%, Horse: 93%, Human: 100%, Mouse: 100%, Rabbit: 100%, Rat: 100%
Characteristics:	This is a rabbit polyclonal antibody against C21ORF18. It was validated on Western Blot using a cell lysate as a positive control.
Purification:	Affinity Purified

Target Details

Target:	SETD4
---------	-------

Target Details

Alternative Name:	C21ORF18 (SETD4 Products)
Background:	C21orf18, located on chromosome 21, is predicted to encode for a hypothetical protein. Alias Symbols: C21orf18, C21orf27 Protein Interaction Partner: UBC, Protein Size: 440
Molecular Weight:	50 kDa
Gene ID:	54093
NCBI Accession:	NM_017438 , NP_059134
UniProt:	Q9NVD3

Application Details

Application Notes:	Optimal working dilutions should be determined experimentally by the investigator.
Comment:	Antigen size: 440 AA
Restrictions:	For Research Use only

Handling

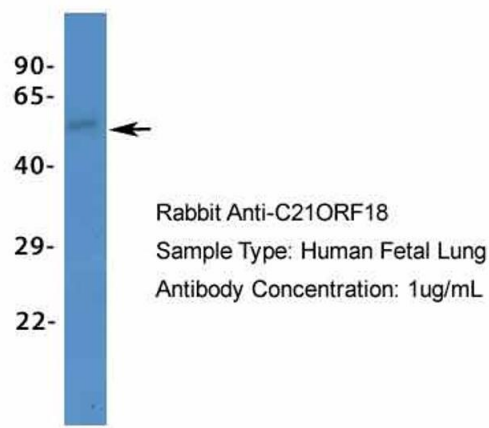
Format:	Liquid
Concentration:	Lot specific
Buffer:	Liquid. Purified antibody supplied in 1x PBS buffer with 0.09 % (w/v) sodium azide and 2 % sucrose.
Preservative:	Sodium azide
Precaution of Use:	This product contains Sodium azide: a POISONOUS AND HAZARDOUS SUBSTANCE which should be handled by trained staff only.
Handling Advice:	Avoid repeated freeze-thaw cycles.
Storage:	-20 °C
Storage Comment:	For short term use, store at 2-8°C up to 1 week. For long term storage, store at -20°C in small aliquots to prevent freeze-thaw cycles.

Publications

Product cited in:	Yang, Kitamura, Wu, Chang, Ling, Kuo: "Tooth Germ-Like Construct Transplantation for Whole-
-------------------	---

Tooth Regeneration: An In Vivo Study in the Miniature Pig." in: **Artificial organs**, Vol. 40, Issue 4, pp. E39-50, (2016) ([PubMed](#)).

C21ORF18



Western Blotting

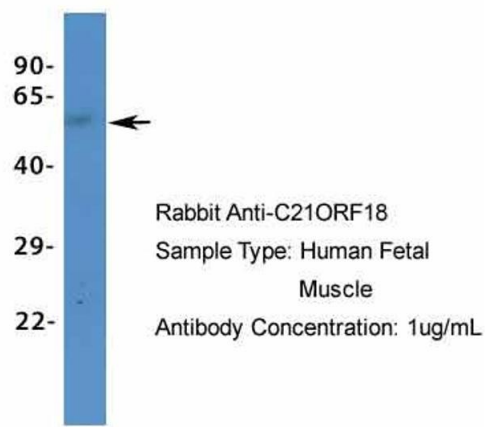
Image 1. Host: Rabbit Target Name: C21ORF18 Sample Type: Human Fetal Lung Antibody Dilution: 1.0ug/ml



Western Blotting

Image 2. WB Suggested Anti-C21ORF18 Antibody Titration: 0.2-1 ug/ml ELISA Titer: 1:12500 Positive Control: HepG2 cell lysate

C21ORF18



Western Blotting

Image 3. Host: Rabbit Target Name: C21ORF18 Sample Type: Human Fetal Muscle Antibody Dilution: 1.0ug/ml