

Datasheet for ABIN2775878
anti-SUV420H1 antibody (C-Term)[Go to Product page](#)

3 Images

Overview

Quantity:	100 µL
Target:	SUV420H1
Binding Specificity:	C-Term
Reactivity:	Human, Rat, Mouse, Dog, Guinea Pig, Horse
Host:	Rabbit
Clonality:	Polyclonal
Conjugate:	This SUV420H1 antibody is un-conjugated
Application:	Western Blotting (WB), Immunohistochemistry (IHC)

Product Details

Immunogen:	The immunogen is a synthetic peptide directed towards the C terminal region of human SUV420H1
Sequence:	NNGFNSGSGS SSTKLKIQLK RDEENRGSYT EGLHENGVC SDPLSLLES R
Predicted Reactivity:	Dog: 86%, Guinea Pig: 92%, Horse: 92%, Human: 100%, Mouse: 91%, Rat: 93%
Characteristics:	This is a rabbit polyclonal antibody against SUV420H1. It was validated on Western Blot using a cell lysate as a positive control.
Purification:	Protein A purified

Target Details

Target:	SUV420H1
---------	----------

Target Details

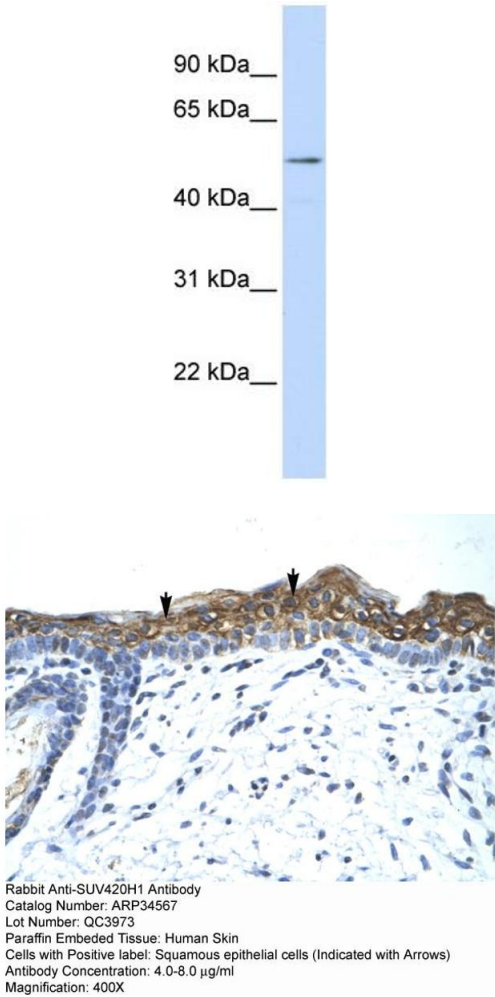
Alternative Name:	SUV420H1 (SUV420H1 Products)
Background:	<p>SUV420H1 is a protein that contains a SET domain. SET domains appear to be protein-protein interaction domains that mediate interactions with a family of proteins that display similarity with dual-specificity phosphatases (dsPTPases). The function of this gene has not been determined.</p> <p>Alias Symbols: CGI85, KMT5B, CGI-85</p> <p>Protein Interaction Partner: SMARCD1, HIST1H4A, YWHAQ,</p> <p>Protein Size: 471</p>
Molecular Weight:	52 kDa
Gene ID:	51111
NCBI Accession:	NM_016028
UniProt:	Q4V775

Application Details

Application Notes:	Optimal working dilutions should be determined experimentally by the investigator.
Comment:	Antigen size: 471 AA
Restrictions:	For Research Use only

Handling

Format:	Liquid
Concentration:	Lot specific
Buffer:	Liquid. Purified antibody supplied in 1x PBS buffer with 0.09 % (w/v) sodium azide and 2 % sucrose.
Preservative:	Sodium azide
Precaution of Use:	This product contains Sodium azide: a POISONOUS AND HAZARDOUS SUBSTANCE which should be handled by trained staff only.
Handling Advice:	Avoid repeated freeze-thaw cycles.
Storage:	-20 °C
Storage Comment:	For short term use, store at 2-8°C up to 1 week. For long term storage, store at -20°C in small aliquots to prevent freeze-thaw cycles.

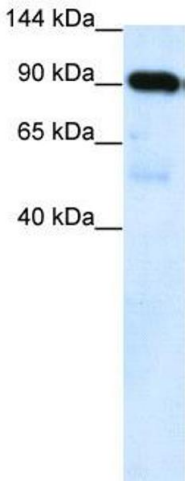


Western Blotting

Image 1. WB Suggested Anti-SUV420H1 Antibody Titration:
1.25 ug/ml Positive Control: Jurkat Whole Cell

Immunohistochemistry

Image 2. Rabbit Anti-SUV420H1 Antibody Paraffin Embedded Tissue: Human Skin Cellular Data: Squamous epithelial cells Antibody Concentration: 4.0-8.0 ug/ml Magnification: 400X



Western Blotting

Image 3. WB Suggested Anti-SUV420H1 Antibody Titration:
0.2-1 ug/ml ELISA Titer: 1:1562500 Positive Control: Human Placenta