

Datasheet for ABIN2775893  
**anti-METTL3 antibody (Middle Region)**[Go to Product page](#)

## 2 Images

## Overview

Quantity:	100 µL
Target:	METTL3
Binding Specificity:	Middle Region
Reactivity:	Human, Rat, Mouse, Dog, Rabbit, Cow, Guinea Pig, Horse, Zebrafish (Danio rerio), Goat
Host:	Rabbit
Clonality:	Polyclonal
Conjugate:	This METTL3 antibody is un-conjugated
Application:	Western Blotting (WB)

## Product Details

Immunogen:	The immunogen is a synthetic peptide directed towards the middle region of human METTL3
Sequence:	AKEPAKKSRL HAASDVLEI ELLNQSTK EQSKKVSQE ILELLNTTTA
Predicted Reactivity:	Cow: 100%, Dog: 100%, Goat: 100%, Guinea Pig: 100%, Horse: 100%, Human: 100%, Mouse: 100%, Rabbit: 100%, Rat: 100%, Zebrafish: 100%
Characteristics:	This is a rabbit polyclonal antibody against METTL3. It was validated on Western Blot using a cell lysate as a positive control.
Purification:	Protein A purified

## Target Details

Target:	METTL3
---------	--------

## Target Details

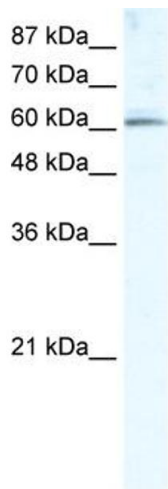
Alternative Name:	METTL3 ( <a href="#">METTL3 Products</a> )
Background:	<p>METTL3 is the 70 kDa subunit of MT-A which is part of N6-adenosine-methyltransferase. This enzyme is involved in the posttranscriptional methylation of internal adenosine residues in eukaryotic mRNAs, forming N6-methyladenosine.</p> <p>Alias Symbols: M6A, IME4, Spo8, MT-A70</p> <p>Protein Interaction Partner: UBC, METTL14, UBD,</p> <p>Protein Size: 580</p>
Molecular Weight:	64 kDa
Gene ID:	56339
NCBI Accession:	<a href="#">NM_019852</a> , <a href="#">NP_062826</a>
UniProt:	<a href="#">Q86U44</a>

## Application Details

Application Notes:	Optimal working dilutions should be determined experimentally by the investigator.
Comment:	Antigen size: 580 AA
Restrictions:	For Research Use only

## Handling

Format:	Liquid
Concentration:	Lot specific
Buffer:	Liquid. Purified antibody supplied in 1x PBS buffer with 0.09 % (w/v) sodium azide and 2 % sucrose.
Preservative:	Sodium azide
Precaution of Use:	This product contains Sodium azide: a POISONOUS AND HAZARDOUS SUBSTANCE which should be handled by trained staff only.
Handling Advice:	Avoid repeated freeze-thaw cycles.
Storage:	-20 °C
Storage Comment:	For short term use, store at 2-8°C up to 1 week. For long term storage, store at -20°C in small aliquots to prevent freeze-thaw cycles.



Western Blotting

**Image 1.** WB Suggested Anti-METTL3 Antibody Titration: 5.0ug/ml ELISA Titer: 1:312500 Positive Control: Raji cell lysate METTL3 is strongly supported by BioGPS gene expression data to be expressed in Human Raji cells

METTL3



Host: Rabbit  
Target Name: METTL3  
Sample Type: HepG2  
Antibody Dilution: 1ug/ml

Western Blotting

**Image 2.** Host: Rabbit Target Name: METTL3 Sample Tissue: Human HepG2 Antibody Dilution: 1.0ug/ml