

Datasheet for ABIN2775894
anti-METTL3 antibody (C-Term)[Go to Product page](#)

2 Images

Overview

Quantity:	100 µL
Target:	METTL3
Binding Specificity:	C-Term
Reactivity:	Human, Rat, Mouse, Dog, Rabbit, Cow, Guinea Pig, Horse, Zebrafish (Danio rerio), Goat
Host:	Rabbit
Clonality:	Polyclonal
Conjugate:	This METTL3 antibody is un-conjugated
Application:	Western Blotting (WB)

Product Details

Immunogen:	The immunogen is a synthetic peptide directed towards the C terminal region of human METTL3
Sequence:	KIELFGRPHN VQPNWITLGN QLDGIHLLDP DVVARFKQRY PDGIISKPKN
Predicted Reactivity:	Cow: 100%, Dog: 100%, Goat: 100%, Guinea Pig: 100%, Horse: 100%, Human: 100%, Mouse: 100%, Rabbit: 100%, Rat: 100%, Zebrafish: 86%
Characteristics:	This is a rabbit polyclonal antibody against METTL3. It was validated on Western Blot.
Purification:	Affinity Purified

Target Details

Target:	METTL3
---------	--------

Target Details

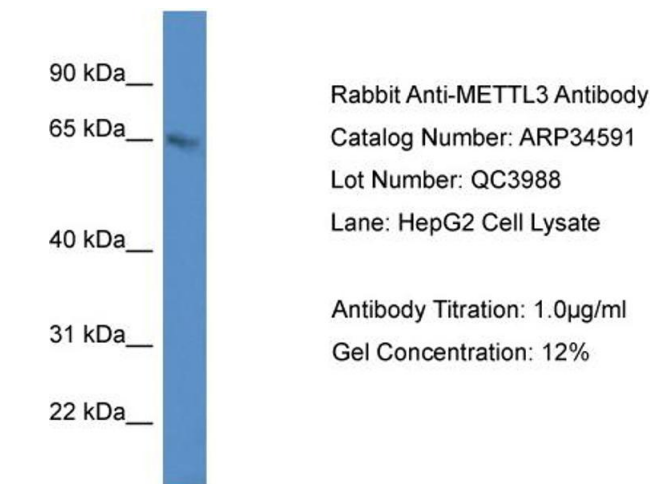
Alternative Name:	METTL3 (METTL3 Products)
Background:	<p>This gene encodes the 70 kDa subunit of MT-A which is part of N6-adenosine-methyltransferase. This enzyme is involved in the posttranscriptional methylation of internal adenosine residues in eukaryotic mRNAs, forming N6-methyladenosine.</p> <p>Alias Symbols: IME4, M6A, MGC4336, MT-A70, Spo8</p> <p>Protein Interaction Partner: UBC, METTL14, UBD,</p> <p>Protein Size: 580</p>
Molecular Weight:	64 kDa
Gene ID:	56339
NCBI Accession:	NM_019852 , NP_062826
UniProt:	Q86U44

Application Details

Application Notes:	Optimal working dilutions should be determined experimentally by the investigator.
Comment:	Antigen size: 580 AA
Restrictions:	For Research Use only

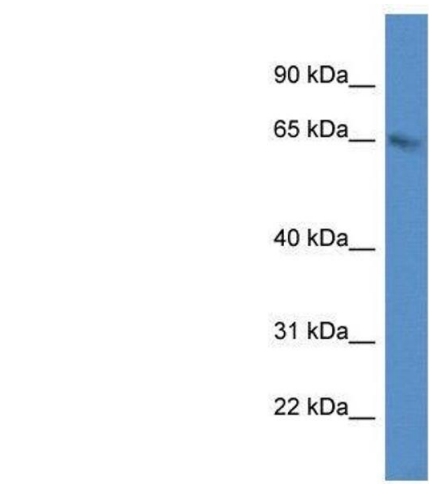
Handling

Format:	Liquid
Concentration:	Lot specific
Buffer:	Liquid. Purified antibody supplied in 1x PBS buffer with 0.09 % (w/v) sodium azide and 2 % sucrose.
Preservative:	Sodium azide
Precaution of Use:	This product contains Sodium azide: a POISONOUS AND HAZARDOUS SUBSTANCE which should be handled by trained staff only.
Handling Advice:	Avoid repeated freeze-thaw cycles.
Storage:	-20 °C
Storage Comment:	For short term use, store at 2-8°C up to 1 week. For long term storage, store at -20°C in small aliquots to prevent freeze-thaw cycles.



Western Blotting

Image 1. WB Suggested Anti-METTL3 Antibody Titration: 1.0 ug/ml Positive Control: HepG2 Whole Cell METTL3 is supported by BioGPS gene expression data to be expressed in HepG2



Western Blotting

Image 2. WB Suggested Anti-METTL3 Antibody Titration: 1.0 µg/mL Positive Control: HepG2 Whole Cell METTL3 is supported by BioGPS gene expression data to be expressed in HepG2