

Datasheet for ABIN2775906

anti-ZNF148 antibody (Middle Region)



[Go to Product page](#)

2 Images

Overview

Quantity:	100 µL
Target:	ZNF148
Binding Specificity:	Middle Region
Reactivity:	Human, Mouse, Rat, Cow, Horse, Dog, Guinea Pig, Pig, Rabbit, Zebrafish (Danio rerio), Saccharomyces cerevisiae
Host:	Rabbit
Clonality:	Polyclonal
Conjugate:	This ZNF148 antibody is un-conjugated
Application:	Western Blotting (WB), Immunohistochemistry (IHC)

Product Details

Immunogen:	The immunogen is a synthetic peptide directed towards the middle region of human ZNF148
Sequence:	RCAIKGGLLT SEEDSGFSTS PKDNSLPKKK RQKTEKKSSG MDKESALDKS
Predicted Reactivity:	Cow: 100%, Dog: 100%, Guinea Pig: 93%, Horse: 100%, Human: 100%, Mouse: 100%, Pig: 100%, Rabbit: 100%, Rat: 93%, Yeast: 83%, Zebrafish: 85%
Characteristics:	This is a rabbit polyclonal antibody against ZNF148. It was validated on Western Blot using a cell lysate as a positive control.
Purification:	Affinity Purified

Target Details

Target:	ZNF148
---------	--------

Target Details

Alternative Name:	ZNF148 (ZNF148 Products)
Background:	<p>ZNF148 is involved in transcriptional regulation. ZNF148 represses the transcription of a number of genes including gastrin, stromelysin and enolase. ZNF148 binds to the G-rich box in the enhancer region of these genes.</p> <p>Alias Symbols: BERF-1, BFCOL1, HT-BETA, ZBP-89, ZFP148, pH Z-52</p> <p>Protein Interaction Partner: CCDC67, CEP70, NUTM2F, GORASP2, GLRX3, TRIM10, SIAH1, KRT31, SUMO1, UBC, NOC4L, ZNF316, TRRAP, KAT2A, EP300, ELAVL1, SUMO2, HDAC1, HDAC3, PTRF, TP53, STAT3,</p> <p>Protein Size: 794</p>
Molecular Weight:	89 kDa
Gene ID:	7707
NCBI Accession:	NM_021964 , NP_068799
UniProt:	Q9UQR1

Application Details

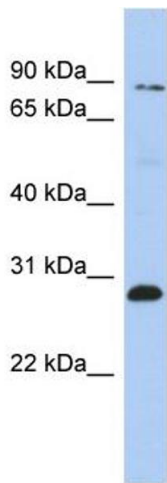
Application Notes:	Optimal working dilutions should be determined experimentally by the investigator.
Comment:	Antigen size: 794 AA
Restrictions:	For Research Use only

Handling

Format:	Liquid
Concentration:	Lot specific
Buffer:	Liquid. Purified antibody supplied in 1x PBS buffer with 0.09 % (w/v) sodium azide and 2 % sucrose.
Preservative:	Sodium azide
Precaution of Use:	This product contains Sodium azide: a POISONOUS AND HAZARDOUS SUBSTANCE which should be handled by trained staff only.
Handling Advice:	Avoid repeated freeze-thaw cycles.
Storage:	-20 °C
Storage Comment:	For short term use, store at 2-8°C up to 1 week. For long term storage, store at -20°C in small

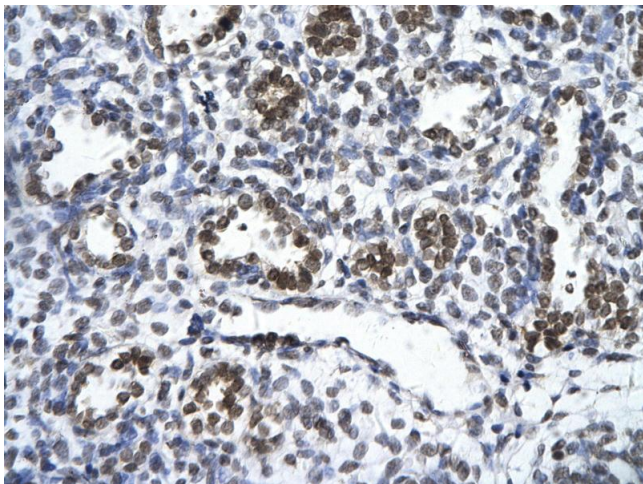
aliquots to prevent freeze-thaw cycles.

Images



Western Blotting

Image 1. WB Suggested Anti-ZNF148 Antibody Titration: 0.2-1 ug/ml ELISA Titer: 1:312500 Positive Control: OVCAR-3 cell lysate ZNF148 is strongly supported by BioGPS gene expression data to be expressed in Human OVCAR3 cells



Immunohistochemistry

Image 2. Rabbit Anti-ZNF148 Antibody Paraffin Embedded Tissue: Human alveolar cell Cellular Data: Epithelial cells of renal tubule Antibody Concentration: 4.0-8.0 ug/ml Magnification: 400X