

Datasheet for ABIN2775909
anti-NAC1 antibody (Middle Region)

2 Images

[Go to Product page](#)

Overview

| | |
|----------------------|---|
| Quantity: | 100 µL |
| Target: | NAC1 (NACC1) |
| Binding Specificity: | Middle Region |
| Reactivity: | Human, Rat, Mouse, Dog, Cow, Horse, Pig, Guinea Pig |
| Host: | Rabbit |
| Clonality: | Polyclonal |
| Conjugate: | This NAC1 antibody is un-conjugated |
| Application: | Western Blotting (WB), Immunohistochemistry (IHC) |

Product Details

| | |
|-----------------------|--|
| Immunogen: | The immunogen is a synthetic peptide directed towards the middle region of human BTBD14B |
| Sequence: | EGMDEQYRQI CNMYTMYSMM NVGQTAEKVE ALPEQVAPES RNRIRVRQDL |
| Predicted Reactivity: | Cow: 100%, Dog: 100%, Guinea Pig: 83%, Horse: 100%, Human: 100%, Mouse: 100%, Pig: 100%, Rat: 100% |
| Characteristics: | This is a rabbit polyclonal antibody against BTBD14B. It was validated on Western Blot and immunohistochemistry. |
| Purification: | Protein A purified |

Target Details

| | |
|---------|--------------|
| Target: | NAC1 (NACC1) |
|---------|--------------|

Target Details

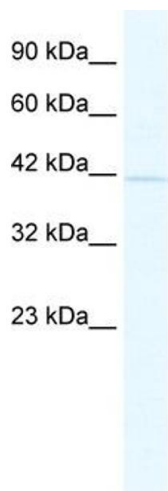
| | |
|-------------------|--|
| Alternative Name: | BTBD14B (NACC1 Products) |
| Background: | <p>The function of the Anti-BTBD14B gene has not yet been determined</p> <p>Alias Symbols: NAC1, BEND8, NAC-1, BTBD14B</p> <p>Protein Interaction Partner: SUMO2, UBC, PARK2, STRN3, KPNA4, KPNA3, TARDBP, NACC1, BCOR, KLHL2, ZBTB6, HDAC4, HDAC3, ENC1, ZBTB14, BCL6, CUL3, CUL4A, PSMD7,</p> <p>Protein Size: 527</p> |
| Molecular Weight: | 57 kDa |
| Gene ID: | 112939 |
| NCBI Accession: | NM_052876 , NP_443108 |
| UniProt: | Q96RE7 |

Application Details

| | |
|--------------------|--|
| Application Notes: | Optimal working dilutions should be determined experimentally by the investigator. |
| Comment: | Antigen size: 527 AA |
| Restrictions: | For Research Use only |

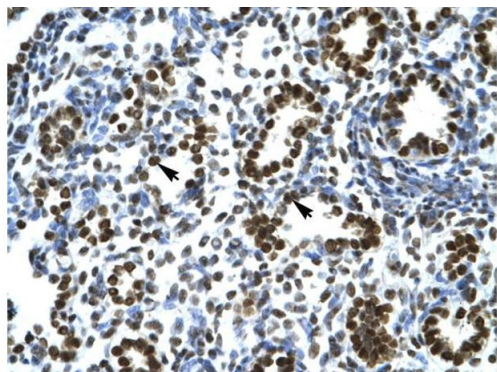
Handling

| | |
|--------------------|---|
| Format: | Liquid |
| Concentration: | Lot specific |
| Buffer: | Liquid. Purified antibody supplied in 1x PBS buffer with 0.09 % (w/v) sodium azide and 2 % sucrose. |
| Preservative: | Sodium azide |
| Precaution of Use: | This product contains Sodium azide: a POISONOUS AND HAZARDOUS SUBSTANCE which should be handled by trained staff only. |
| Handling Advice: | Avoid repeated freeze-thaw cycles. |
| Storage: | -20 °C |
| Storage Comment: | For short term use, store at 2-8°C up to 1 week. For long term storage, store at -20°C in small aliquots to prevent freeze-thaw cycles. |



Western Blotting

Image 1. WB Suggested Anti-BTBD14B Antibody Titration: 2.5ug/ml ELISA Titer: 1:312500 Positive Control: Jurkat cell lysate



Rabbit Anti-BTBD14B Antibody
Catalog Number: ARP34614
Lot Number: QC4004
Paraffin Embedded Tissue: Human Lung
Cells with Positive label: Alveolar cells (Indicated with Arrows)
Antibody Concentration: 4.0-8.0 µg/ml
Magnification: 400X

Immunohistochemistry

Image 2. Human Lung