

Datasheet for ABIN2775910  
**anti-KLHL36 antibody (Middle Region)**[Go to Product page](#)[1 Image](#)[1 Publication](#)

## Overview

Quantity:	100 µL
Target:	KLHL36
Binding Specificity:	Middle Region
Reactivity:	Human, Mouse, Rat, Dog, Cow, Guinea Pig, Horse, Rabbit
Host:	Rabbit
Clonality:	Polyclonal
Conjugate:	This KLHL36 antibody is un-conjugated
Application:	Western Blotting (WB)

## Product Details

Immunogen:	The immunogen is a synthetic peptide directed towards the middle region of human C16orf44
Sequence:	EDMLVAIGGR NENGALSSVE TYSPKTDWS YVAGLPRFTY GHAGTIYKDF
Predicted Reactivity:	Cow: 100%, Dog: 100%, Guinea Pig: 93%, Horse: 100%, Human: 100%, Mouse: 93%, Rabbit: 86%, Rat: 100%
Characteristics:	This is a rabbit polyclonal antibody against C16orf44. It was validated on Western Blot using a cell lysate as a positive control.
Purification:	Affinity Purified

## Target Details

Target:	KLHL36
---------	--------

## Target Details

Alternative Name:	C16orf44 ( <a href="#">KLHL36 Products</a> )
Background:	<p>C16orf44(KLHL36) probable substrate-specific adapter of an E3 ubiquitin-protein ligase complex which mediates the ubiquitination and subsequent proteasomal degradation of target proteins.</p> <p>Alias Symbols: FLJ12543, C16orf44</p> <p>Protein Interaction Partner: HSP90AA1, COPS5, CUL3, UBC,</p> <p>Protein Size: 616</p>
Molecular Weight:	70 kDa
Gene ID:	79786
NCBI Accession:	<a href="#">NM_024731</a> , <a href="#">NP_079007</a>
UniProt:	<a href="#">Q8N4N3</a>

## Application Details

Application Notes:	Optimal working dilutions should be determined experimentally by the investigator.
Comment:	Antigen size: 616 AA
Restrictions:	For Research Use only

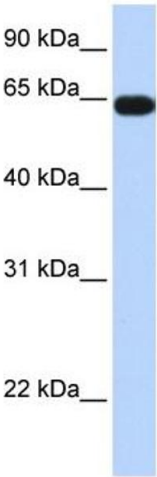
## Handling

Format:	Liquid
Concentration:	Lot specific
Buffer:	Liquid. Purified antibody supplied in 1x PBS buffer with 0.09 % (w/v) sodium azide and 2 % sucrose.
Preservative:	Sodium azide
Precaution of Use:	This product contains Sodium azide: a POISONOUS AND HAZARDOUS SUBSTANCE which should be handled by trained staff only.
Handling Advice:	Avoid repeated freeze-thaw cycles.
Storage:	-20 °C
Storage Comment:	For short term use, store at 2-8°C up to 1 week. For long term storage, store at -20°C in small aliquots to prevent freeze-thaw cycles.

Publications

Product cited in: Lazrek, Goffard, Schanen, Karquel, Bocket, Lion, Devaux, Hedouin, Gosset, Hober: "Detection of hepatitis C virus antibodies and RNA among medicolegal autopsy cases in Northern France." in: **Diagnostic microbiology and infectious disease**, Vol. 55, Issue 1, pp. 55-8, (2006) ([PubMed](#)).

Images



**Western Blotting**

**Image 1.** WB Suggested Anti-C16orf44 Antibody Titration: 0.2-1 ug/ml ELISA Titer: 1:62500 Positive Control: Human heart