

Datasheet for ABIN2775918
anti-BTBD14A antibody (N-Term)[Go to Product page](#)

2 Images

Overview

Quantity:	100 µL
Target:	BTBD14A
Binding Specificity:	N-Term
Reactivity:	Human, Mouse, Rat, Cow, Dog, Guinea Pig, Horse
Host:	Rabbit
Clonality:	Polyclonal
Conjugate:	This BTBD14A antibody is un-conjugated
Application:	Western Blotting (WB), Immunohistochemistry (IHC)

Product Details

Immunogen:	The immunogen is a synthetic peptide directed towards the N terminal region of human BTBD14A
Sequence:	CDVSIVVKGQ AFKAHRAVLA ASSLYFRDLF SGNSKSAFEL PGSVPPACFQ
Predicted Reactivity:	Cow: 100%, Dog: 100%, Guinea Pig: 100%, Horse: 100%, Human: 100%, Mouse: 100%, Rat: 100%
Characteristics:	This is a rabbit polyclonal antibody against BTBD14A. It was validated on Western Blot and immunohistochemistry.
Purification:	Protein A purified

Target Details

Target:	BTBD14A
---------	---------

Target Details

Alternative Name:	BTBD14A (BTBD14A Products)
Background:	<p>CDNA sequence was generated by The National Institutes of Health Mammalian Gene Collection (MGC) Program.</p> <p>Alias Symbols: BTBD14, MGC23427, BEND9, BTBD14A</p> <p>Protein Interaction Partner: RBBP7, NACC2, MTA3, MTA2, MTA1, RBBP4, HDAC2, HDAC1, CHD4, EPS8, UBC,</p> <p>Protein Size: 587</p>
Molecular Weight:	63 kDa
Gene ID:	138151
NCBI Accession:	NM_144653 , NP_653254
UniProt:	Q96BF6
Pathways:	Positive Regulation of Response to DNA Damage Stimulus

Application Details

Application Notes:	Optimal working dilutions should be determined experimentally by the investigator.
Comment:	Antigen size: 587 AA
Restrictions:	For Research Use only

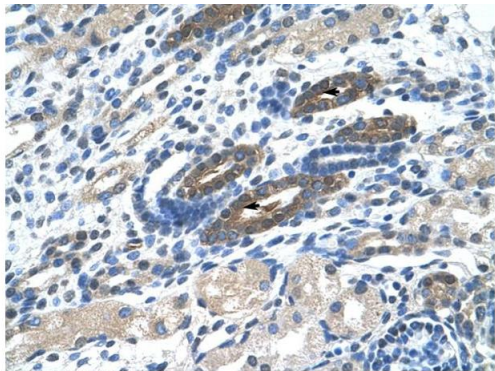
Handling

Format:	Liquid
Concentration:	Lot specific
Buffer:	Liquid. Purified antibody supplied in 1x PBS buffer with 0.09 % (w/v) sodium azide and 2 % sucrose.
Preservative:	Sodium azide
Precaution of Use:	This product contains Sodium azide: a POISONOUS AND HAZARDOUS SUBSTANCE which should be handled by trained staff only.
Handling Advice:	Avoid repeated freeze-thaw cycles.
Storage:	-20 °C
Storage Comment:	For short term use, store at 2-8°C up to 1 week. For long term storage, store at -20°C in small aliquots to prevent freeze-thaw cycles.



Western Blotting

Image 1. WB Suggested Anti-BTBD14A Antibody Titration:
0.625ug/ml Positive Control: Jurkat cell lysate



Immunohistochemistry

Image 2. Human kidney

Rabbit Anti-BTBD14A Antibody
Catalog Number: ARP34627
Lot Number: QC11636
Paraffin Embedded Tissue: Human Kidney
Cells with Positive label: Epithelial cells of renal tubule (Indicated with Arrows)
Antibody Concentration: 4.0-8.0 µg/ml
Magnification: 400X