



[Go to Product page](#)

Datasheet for ABIN2775929

anti-PSIP1 antibody (Middle Region)

4 Images

Overview

Quantity:	100 µL
Target:	PSIP1
Binding Specificity:	Middle Region
Reactivity:	Human, Rat, Mouse, Dog, Horse, Guinea Pig, Rabbit, Cow, Sheep
Host:	Rabbit
Clonality:	Polyclonal
Conjugate:	This PSIP1 antibody is un-conjugated
Application:	Western Blotting (WB), Immunohistochemistry (IHC)

Product Details

Immunogen:	The immunogen is a synthetic peptide directed towards the middle region of human PSIP1
Sequence:	AADRKRKQEE QMETEQQNKD EGKKPEVKKV EKKRETSMDS RLQRIHAEIK
Predicted Reactivity:	Cow: 100%, Dog: 100%, Guinea Pig: 100%, Horse: 100%, Human: 100%, Mouse: 100%, Rabbit: 100%, Rat: 100%, Sheep: 100%
Characteristics:	This is a rabbit polyclonal antibody against PSIP1. It was validated on Western Blot using a cell lysate as a positive control.
Purification:	Protein A purified

Target Details

Target:	PSIP1
---------	-------

Target Details

Alternative Name: [PSIP1 \(PSIP1 Products\)](#)

Background: PSIP1 is a transcriptional coactivator. It also acts as an adaptor to coordinate pre-mRNA splicing and transcriptional activation of class II genes.

Alias Symbols: p52, p75, PAIP, DFS70, LEDGF, PSIP2

Protein Interaction Partner: PPP2R1A, UBC, RPA3, RPA2, RPA1, HMGA2, HMGA1, WHSC1, CSNK2A1, gag-pol, ESR1, ZC3H18, FTSJ3, EXOSC5, EXOSC4, NCSTN, RRS1, SUPT16H, SAP18, THRAP3, EIF4A3, U2AF1, TPBG, SON, TRA2B, RPS24, RPS11, RPL6, CAST, SH3KBP1, MEN1, SUMO1, SUMO2, HDGF, MAPK6, KMT2A, BA

Protein Size: 530

Molecular Weight: 60 kDa

Gene ID: 11168

NCBI Accession: [NM_033222](#), [NP_150091](#)

UniProt: [O75475](#)

Pathways: [Chromatin Binding](#), [Ribonucleoprotein Complex Subunit Organization](#)

Application Details

Application Notes: Optimal working dilutions should be determined experimentally by the investigator.

Comment: Antigen size: 530 AA

Restrictions: For Research Use only

Handling

Format: Liquid

Concentration: Lot specific

Buffer: Liquid. Purified antibody supplied in 1x PBS buffer with 0.09 % (w/v) sodium azide and 2 % sucrose.

Preservative: Sodium azide

Precaution of Use: This product contains Sodium azide: a POISONOUS AND HAZARDOUS SUBSTANCE which should be handled by trained staff only.

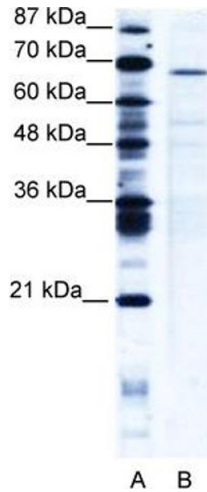
Handling Advice: Avoid repeated freeze-thaw cycles.

Storage: -20 °C

Handling

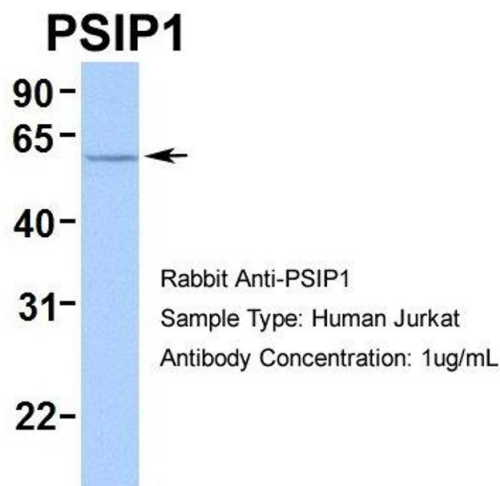
Storage Comment: For short term use, store at 2-8°C up to 1 week. For long term storage, store at -20°C in small aliquots to prevent freeze-thaw cycles.

Images



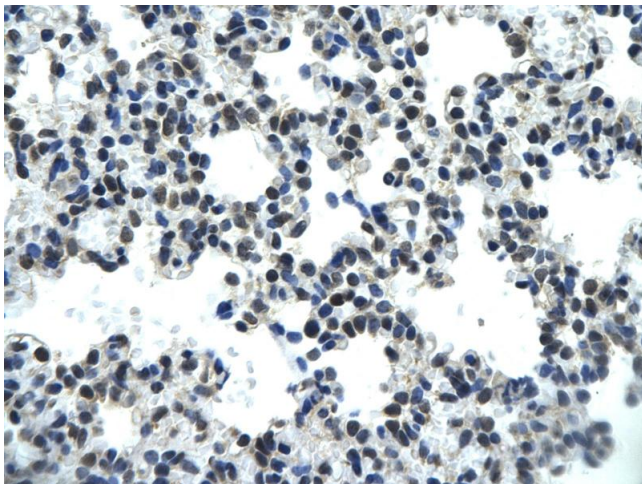
Western Blotting

Image 1. WB Suggested Anti-PSIP1 Antibody Titration: 5 ug/ml Positive Control: Jurkat Whole Cell PSIP1 is strongly supported by BioGPS gene expression data to be expressed in Human Jurkat cells



Western Blotting

Image 2. Human Jurkat



Immunohistochemistry

Image 3. Rabbit Anti-PSIP1 antibody Paraffin Embedded Tissue: Human Lung cell Cellular Data: Epithelial cells of renal tubule Antibody Concentration: 4.0-8.0 ug/ml Magnification: 400X

Please check the [product details page](#) for more images. Overall 4 images are available for ABIN2775929.