



Datasheet for ABIN2775930
anti-TRIM15 antibody (N-Term)



[Go to Product page](#)

3 Images

Overview

| | |
|----------------------|---|
| Quantity: | 100 µL |
| Target: | TRIM15 |
| Binding Specificity: | N-Term |
| Reactivity: | Human, Mouse, Rat, Cow, Rabbit, Horse |
| Host: | Rabbit |
| Clonality: | Polyclonal |
| Conjugate: | This TRIM15 antibody is un-conjugated |
| Application: | Western Blotting (WB), Immunohistochemistry (IHC) |

Product Details

| | |
|-----------------------|---|
| Immunogen: | The immunogen is a synthetic peptide directed towards the N terminal region of human TRIM15 |
| Sequence: | RDEIEDVKCQ EDQKLQVLLT QIESKKHQVE TAFERLQQEL EQQRCLLLAR |
| Predicted Reactivity: | Cow: 86%, Horse: 86%, Human: 100%, Mouse: 93%, Rabbit: 79%, Rat: 86% |
| Characteristics: | This is a rabbit polyclonal antibody against TRIM15. It was validated on Western Blot and immunohistochemistry. |
| Purification: | Protein A purified |

Target Details

| | |
|---------|--------|
| Target: | TRIM15 |
|---------|--------|

Target Details

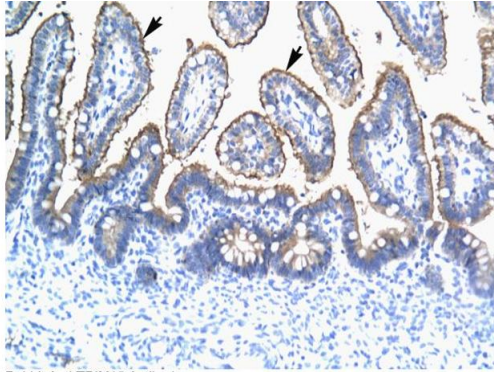
| | |
|-------------------|---|
| Alternative Name: | TRIM15 (TRIM15 Products) |
| Background: | <p>TRIM15 is a member of the tripartite motif (TRIM) family. The TRIM motif includes three zinc-binding domains, a RING, a B-box type 1 and a B-box type 2, and a coiled-coil region. The protein localizes to the cytoplasm. Its function has not been identified.</p> <p>Alias Symbols: RNF93, ZNFB7, ZNF178</p> <p>Protein Interaction Partner: FAM151B, FAM161A, RABGEF1, TRIM8, TINF2, ACD, TRIM15, EHMT1, TAF9B, SNW1, MED7, MYBL2, IRF5, GTF2E1, UBE2U,</p> <p>Protein Size: 465</p> |
| Molecular Weight: | 52 kDa |
| Gene ID: | 89870 |
| NCBI Accession: | NM_033229 , NP_150232 |
| UniProt: | Q9C019 |

Application Details

| | |
|--------------------|--|
| Application Notes: | Optimal working dilutions should be determined experimentally by the investigator. |
| Comment: | Antigen size: 465 AA |
| Restrictions: | For Research Use only |

Handling

| | |
|--------------------|---|
| Format: | Liquid |
| Concentration: | Lot specific |
| Buffer: | Liquid. Purified antibody supplied in 1x PBS buffer with 0.09 % (w/v) sodium azide and 2 % sucrose. |
| Preservative: | Sodium azide |
| Precaution of Use: | This product contains Sodium azide: a POISONOUS AND HAZARDOUS SUBSTANCE which should be handled by trained staff only. |
| Handling Advice: | Avoid repeated freeze-thaw cycles. |
| Storage: | -20 °C |
| Storage Comment: | For short term use, store at 2-8°C up to 1 week. For long term storage, store at -20°C in small aliquots to prevent freeze-thaw cycles. |



Rabbit Anti-TRIM15 Antibody
Catalog Number: ARP34645
Lot Number: QC4044
Paraffin Embedded Tissue: Human Intestine
Cells with Positive label: Epithelial cells of intestinal villus (Indicated with Arrows)
Antibody Concentration: 4.0-8.0 µg/ml
Magnification: 200X

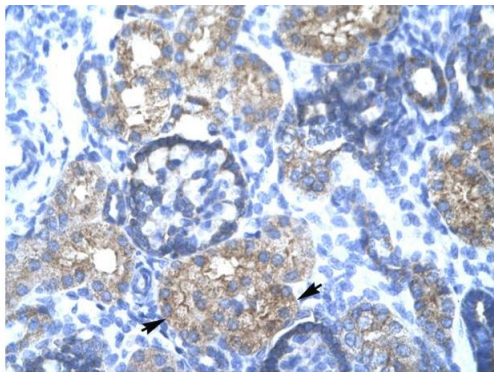


Immunohistochemistry

Image 1. Human Intestine

Western Blotting

Image 2. WB Suggested Anti-TRIM15 Antibody Titration: 1.25ug/ml ELISA Titer: 1:312500 Positive Control: HepG2 cell lysate There is BioGPS gene expression data showing that TRIM15 is expressed in HepG2



Rabbit Anti-TRIM15 Antibody
Catalog Number: ARP34645
Lot Number: QC4044
Paraffin Embedded Tissue: Human Kidney
Cells with Positive label: Epithelial cells of renal tubule (Indicated with Arrows)
Antibody Concentration: 4.0-8.0 µg/ml
Magnification: 400X

Immunohistochemistry

Image 3. Human kidney