

Datasheet for ABIN2775953
anti-PAX5 antibody (N-Term)

3 Images

[Go to Product page](#)

Overview

Quantity:	100 µL
Target:	PAX5
Binding Specificity:	N-Term
Reactivity:	Human, Mouse, Rat, Dog, Cow, Guinea Pig, Horse, Rabbit, Zebrafish (Danio rerio)
Host:	Rabbit
Clonality:	Polyclonal
Conjugate:	This PAX5 antibody is un-conjugated
Application:	Western Blotting (WB), Immunohistochemistry (IHC)

Product Details

Immunogen:	The immunogen is a synthetic peptide directed towards the N terminal region of human PAX5
Sequence:	CVSKILGRYY ETGSIKPGVI GSKPKVATP KVVEKIAEYK RQNPTMFAWE
Predicted Reactivity:	Cow: 100%, Dog: 100%, Guinea Pig: 100%, Horse: 100%, Human: 100%, Mouse: 100%, Rabbit: 100%, Rat: 100%, Zebrafish: 100%
Characteristics:	This is a rabbit polyclonal antibody against PAX5. It was validated on Western Blot and immunohistochemistry.
Purification:	Affinity Purified

Target Details

Target:	PAX5
---------	------

Target Details

Alternative Name:	PAX5 (PAX5 Products)
Background:	<p>The PAX5 gene is a member of the paired box (PAX) family of transcription factors. The central feature of this gene family is a novel, highly conserved DNA-binding motif, known as the paired box. The PAX proteins are important regulators in early development, and alterations in the expression of their genes are thought to contribute to neoplastic transformation. The PAX5 gene encodes the B-cell lineage specific activator protein (BSAP) that is expressed at early, but not late stages of B-cell differentiation. Its expression has also been detected in developing CNS and testis, therefore, PAX5 gene product may not only play an important role in B-cell differentiation, but also in neural development and spermatogenesis.</p> <p>Alias Symbols: BSAP</p> <p>Protein Interaction Partner: TBP, RB1, EP300, RUNX1, TLE4, DAXX, KPNA1, KPNA2, ID2, ID3, CREBBP, MYB, PAX5, ETS1, EBF1,</p> <p>Protein Size: 391</p>
Molecular Weight:	42 kDa
Gene ID:	5079
NCBI Accession:	NM_016734 , NP_057953
UniProt:	Q02548

Application Details

Application Notes:	Optimal working dilutions should be determined experimentally by the investigator.
Comment:	Antigen size: 391 AA
Restrictions:	For Research Use only

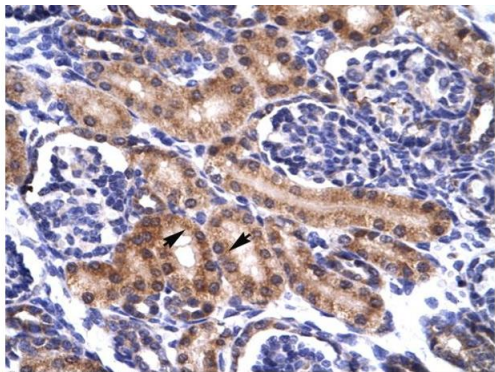
Handling

Format:	Liquid
Concentration:	Lot specific
Buffer:	Liquid. Purified antibody supplied in 1x PBS buffer with 0.09 % (w/v) sodium azide and 2 % sucrose.
Preservative:	Sodium azide
Precaution of Use:	This product contains Sodium azide: a POISONOUS AND HAZARDOUS SUBSTANCE which should be handled by trained staff only.

Handling

Handling Advice:	Avoid repeated freeze-thaw cycles.
Storage:	-20 °C
Storage Comment:	For short term use, store at 2-8°C up to 1 week. For long term storage, store at -20°C in small aliquots to prevent freeze-thaw cycles.

Validation report #104256 for Western Blotting (WB)



Rabbit Anti-PAX5 Antibody
Catalog Number: ARP34686
Lot Number: QC4066
Paraffin Embedded Tissue: Human Kidney
Cells with Positive label: Epithelial cells of renal tubule (Indicated with Arrows)
Antibody Concentration: 4.0-8.0 µg/ml
Magnification: 400X

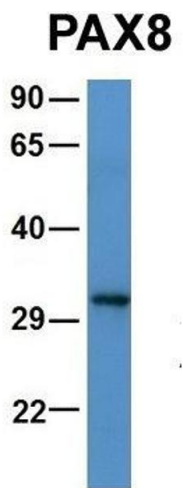
Immunohistochemistry

Image 1. Human kidney



Western Blotting

Image 2. WB Suggested Anti-PAX5 Antibody Titration: 0.2-1 ug/ml ELISA Titer: 1:312500 Positive Control: Jurkat cell lysate



Western Blotting

Image 3. Host: Rabbit Target Name: PAX8 Sample Type: Human 721_B Antibody Dilution: 1.0ug/ml PAX5 is supported by BioGPS gene expression data to be expressed in 721_B