

Datasheet for ABIN2775962  
**anti-RBBP9 antibody (N-Term)**

## 3 Images

[Go to Product page](#)

## Overview

Quantity:	100 µL
Target:	RBBP9
Binding Specificity:	N-Term
Reactivity:	Human, Mouse, Rat, Rabbit, Cow, Zebrafish (Danio rerio), Dog, Guinea Pig, Horse
Host:	Rabbit
Clonality:	Polyclonal
Conjugate:	This RBBP9 antibody is un-conjugated
Application:	Western Blotting (WB), Immunofluorescence (IF)

## Product Details

Immunogen:	The immunogen is a synthetic peptide directed towards the N terminal region of human RBBP9
Sequence:	MASPSKAVIV PGNGGGDVTT HGWYGWVKKE LEKIPGFQCL AKNMPDPITA
Predicted Reactivity:	Cow: 79%, Dog: 93%, Guinea Pig: 93%, Horse: 93%, Human: 100%, Mouse: 93%, Rabbit: 93%, Rat: 93%, Zebrafish: 91%
Characteristics:	This is a rabbit polyclonal antibody against RBBP9. It was validated on Western Blot using a cell lysate as a positive control.
Purification:	Affinity Purified

## Target Details

Target:	RBBP9
---------	-------

## Target Details

Alternative Name:	RBBP9 ( <a href="#">RBBP9 Products</a> )
Background:	<p>RBBP9 may play a role in the transformation process due to its capacity to confer resistance to the growth-inhibitory effects of TGF-beta1 through interaction with retinoblastoma and the subsequent displacement of E2F-1. The protein encoded by this gene is a retinoblastoma binding protein that may play a role in the regulation of cell proliferation and differentiation. Two alternatively spliced transcript variants of this gene with identical predicted protein products have been reported, one of which is a nonsense-mediated decay candidate.</p> <p>Alias Symbols: BOG, MGC9236, RBBP10</p> <p>Protein Interaction Partner: RB1, TERF2IP, UBC, YRDC, RBL2, RBL1,</p> <p>Protein Size: 186</p>
Molecular Weight:	21 kDa
Gene ID:	10741
NCBI Accession:	<a href="#">NM_006606</a> , <a href="#">NP_006597</a>
UniProt:	<a href="#">O75884</a>

## Application Details

Application Notes:	Optimal working dilutions should be determined experimentally by the investigator.
Comment:	Antigen size: 186 AA
Restrictions:	For Research Use only

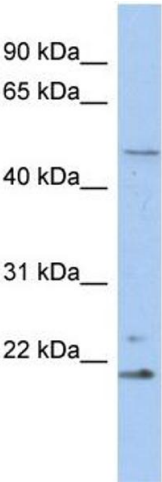
## Handling

Format:	Liquid
Concentration:	Lot specific
Buffer:	Liquid. Purified antibody supplied in 1x PBS buffer with 0.09 % (w/v) sodium azide and 2 % sucrose.
Preservative:	Sodium azide
Precaution of Use:	This product contains Sodium azide: a POISONOUS AND HAZARDOUS SUBSTANCE which should be handled by trained staff only.
Handling Advice:	Avoid repeated freeze-thaw cycles.
Storage:	-20 °C

Handling

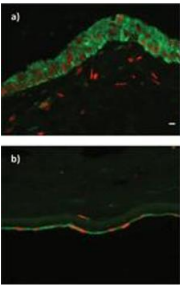
Storage Comment: For short term use, store at 2-8°C up to 1 week. For long term storage, store at -20°C in small aliquots to prevent freeze-thaw cycles.

Images



**Western Blotting**

**Image 1.** WB Suggested Anti-RBBP9 Antibody Titration: 0.2-1 ug/ml ELISA Titer: 1:1562500 Positive Control: THP-1 cell lysate



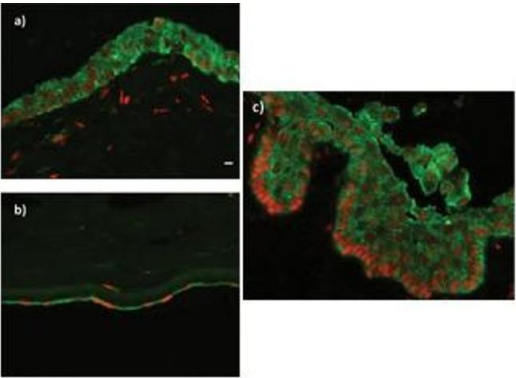
**RBBP9 (ARP34703\_P050)**  
Immunofluorescence  
Primary dilution: 1:150  
Second dilution: 1:300  
  
Application data in forum  
  
Submitted by:  
Lab of the Biology and Pathology of  
the Eye, Charles University in Prague

**Image 2.**

**Legend**  
a) corneal epithelium  
b) corneal endothelium  
c) limbus

**Immunofluorescence**

**Image 3.** WB Suggested Anti-HNRNPA0 Antibody Titration: 1.25 ug/ml Positive Control: HepG2 Whole Cell



**Legend**  
a) corneal epithelium  
b) corneal endothelium  
c) limbus