

Datasheet for ABIN2775969
anti-LRRC14 antibody (C-Term)[Go to Product page](#)

1 Image

Overview

Quantity:	100 µL
Target:	LRRC14
Binding Specificity:	C-Term
Reactivity:	Human, Cow, Mouse, Rat, Dog, Guinea Pig, Horse, Pig
Host:	Rabbit
Clonality:	Polyclonal
Conjugate:	This LRRC14 antibody is un-conjugated
Application:	Western Blotting (WB)

Product Details

Immunogen:	The immunogen is a synthetic peptide directed towards the C terminal region of human LRRC14
Sequence:	ELLRDSVAQA ELRTVVHPFP VDCYEGLPWP PPASVLEAS INEEKFARVE
Predicted Reactivity:	Cow: 93%, Dog: 93%, Guinea Pig: 93%, Horse: 93%, Human: 100%, Mouse: 93%, Pig: 100%, Rat: 93%
Characteristics:	This is a rabbit polyclonal antibody against LRRC14. It was validated on Western Blot using a cell lysate as a positive control.
Purification:	Affinity Purified

Target Details

Target:	LRRC14
---------	--------

Target Details

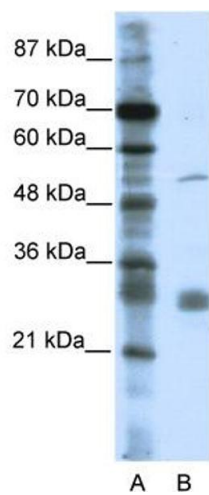
Alternative Name:	LRRC14 (LRRC14 Products)
Background:	LRRC14 belongs to the PRAME family and contains 6 LRR (leucine-rich) repeats Alias Symbols: LRRC14A Protein Interaction Partner: COPS6, RBX1, COPS3, CUL2, TCEB2, TCEB1, COPS4, COPS5, UBC, Protein Size: 493
Molecular Weight:	55 kDa
Gene ID:	9684
NCBI Accession:	NM_014665 , NP_055480
UniProt:	Q15048

Application Details

Application Notes:	Optimal working dilutions should be determined experimentally by the investigator.
Comment:	Antigen size: 493 AA
Restrictions:	For Research Use only

Handling

Format:	Liquid
Concentration:	Lot specific
Buffer:	Liquid. Purified antibody supplied in 1x PBS buffer with 0.09 % (w/v) sodium azide and 2 % sucrose.
Preservative:	Sodium azide
Precaution of Use:	This product contains Sodium azide: a POISONOUS AND HAZARDOUS SUBSTANCE which should be handled by trained staff only.
Handling Advice:	Avoid repeated freeze-thaw cycles.
Storage:	-20 °C
Storage Comment:	For short term use, store at 2-8°C up to 1 week. For long term storage, store at -20°C in small aliquots to prevent freeze-thaw cycles.



Western Blotting

Image 1. WB Suggested Anti-LRRC14 Antibody Titration:
0.2-1 ug/ml ELISA Titer: 1:62500 Positive Control: HepG2
cell lysate