

Datasheet for ABIN2775971  
**anti-PHF17 antibody (C-Term)**[Go to Product page](#)

## 2 Images

## Overview

Quantity:	100 µL
Target:	PHF17
Binding Specificity:	C-Term
Reactivity:	Human, Mouse, Rat, Rabbit, Cow, Dog, Guinea Pig, Horse, Zebrafish (Danio rerio)
Host:	Rabbit
Clonality:	Polyclonal
Conjugate:	This PHF17 antibody is un-conjugated
Application:	Western Blotting (WB), Immunohistochemistry (IHC)

## Product Details

Immunogen:	The immunogen is a synthetic peptide directed towards the C terminal region of human PHF17
Sequence:	YQYWKLKRKV NFNKPLITPK KDEEDNLAKR EQDVLFRRLQ LFTHLRQDLE
Predicted Reactivity:	Cow: 100%, Dog: 100%, Guinea Pig: 100%, Horse: 100%, Human: 100%, Mouse: 100%, Rabbit: 100%, Rat: 100%, Zebrafish: 77%
Characteristics:	This is a rabbit polyclonal antibody against PHF17. It was validated on Western Blot using a cell lysate as a positive control.
Purification:	Affinity Purified

## Target Details

Target:	PHF17
---------	-------

## Target Details

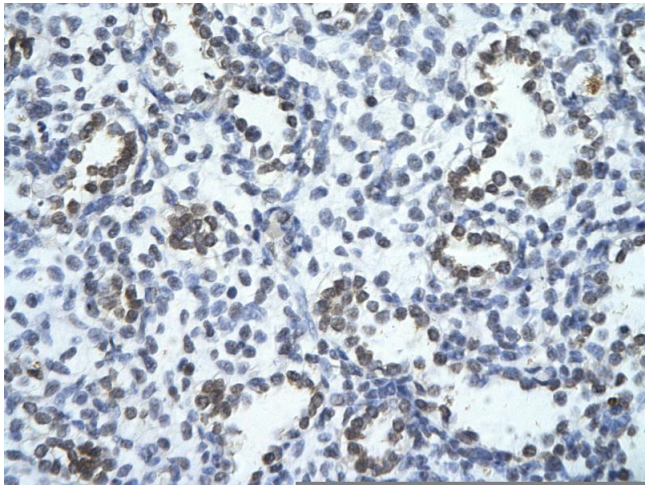
Alternative Name:	PHF17 ( <a href="#">PHF17 Products</a> )
Background:	<p>PHF17 belongs to the JADE family. It contains 2 PHD-type zinc fingers. PHF17 is a transcriptional coactivator which seems to act by promoting acetylation of nucleosomal histone H4 by HTATIP. PHF17 promotes apoptosis. It may act as a renal tumor suppressor.</p> <p>Alias Symbols: FLJ22479, JADE1, KIAA1807</p> <p>Protein Interaction Partner: CCDC94, UBE2H, UBE2E1, UBE3A, AKT1, PKD1, UBC, ING5, MEAF6, ING4, KAT7, SEPT8, TK1, SMN1, PFDN1, HMOX2, VHL, HIST2H3C, KAT5, CTNNB1,</p> <p>Protein Size: 509</p>
Molecular Weight:	58 kDa
Gene ID:	79960
NCBI Accession:	<a href="#">NM_024900</a> , <a href="#">NP_079176</a>
UniProt:	<a href="#">Q6IE81</a>

## Application Details

Application Notes:	Optimal working dilutions should be determined experimentally by the investigator.
Comment:	Antigen size: 509 AA
Restrictions:	For Research Use only

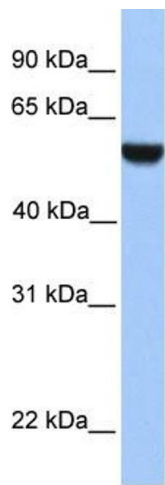
## Handling

Format:	Liquid
Concentration:	Lot specific
Buffer:	Liquid. Purified antibody supplied in 1x PBS buffer with 0.09 % (w/v) sodium azide and 2 % sucrose.
Preservative:	Sodium azide
Precaution of Use:	This product contains Sodium azide: a POISONOUS AND HAZARDOUS SUBSTANCE which should be handled by trained staff only.
Handling Advice:	Avoid repeated freeze-thaw cycles.
Storage:	-20 °C
Storage Comment:	For short term use, store at 2-8°C up to 1 week. For long term storage, store at -20°C in small aliquots to prevent freeze-thaw cycles.



### Immunohistochemistry

**Image 1.** Rabbit Anti-PHF17 Antibody Paraffin Embedded  
Tissue: Human alveolar cell Cellular Data: Epithelial cells of  
renal tubule Antibody Concentration: 4.0-8.0 ug/ml  
Magnification: 400X



### Western Blotting

**Image 2.** WB Suggested Anti-PHF17 Antibody Titration: 0.2-  
1 ug/ml ELISA Titer: 1:62500 Positive Control: Human heart