

Datasheet for ABIN2775975
anti-CBX3 antibody (Middle Region)[Go to Product page](#)

4 Images

Overview

| | |
|----------------------|--|
| Quantity: | 100 µL |
| Target: | CBX3 |
| Binding Specificity: | Middle Region |
| Reactivity: | Human, Mouse, Rat, Dog, Cow, Guinea Pig, Horse, Rabbit |
| Host: | Rabbit |
| Clonality: | Polyclonal |
| Conjugate: | This CBX3 antibody is un-conjugated |
| Application: | Western Blotting (WB) |

Product Details

| | |
|-----------------------|--|
| Immunogen: | The immunogen is a synthetic peptide directed towards the middle region of human CBX3 |
| Sequence: | WEPEENLDGP ELIEAFLNSQ KAGKEKDGTK RKSLSSESSED DSKSKKKRDA |
| Predicted Reactivity: | Cow: 100%, Dog: 100%, Guinea Pig: 100%, Horse: 100%, Human: 100%, Mouse: 100%, Rabbit: 100%, Rat: 100% |
| Characteristics: | This is a rabbit polyclonal antibody against CBX3. It was validated on Western Blot using a cell lysate as a positive control. |
| Purification: | Affinity Purified |

Target Details

| | |
|---------|------|
| Target: | CBX3 |
|---------|------|

Target Details

Alternative Name: CBX3 ([CBX3 Products](#))

Background: At the nuclear envelope, the nuclear lamina and heterochromatin are adjacent to the inner nuclear membrane. CBX3 binds DNA and is a component of heterochromatin. CBX3 also can bind lamin B receptor, an integral membrane protein found in the inner nuclear membrane. The dual binding functions of CBX3 may explain the association of heterochromatin with the inner nuclear membrane. At the nuclear envelope, the nuclear lamina and heterochromatin are adjacent to the inner nuclear membrane. The protein encoded by this gene binds DNA and is a component of heterochromatin. This protein also can bind lamin B receptor, an integral membrane protein found in the inner nuclear membrane. The dual binding functions of the encoded protein may explain the association of heterochromatin with the inner nuclear membrane. Two transcript variants encoding the same protein but differing in the 5' UTR, have been found for this gene.

Alias Symbols: HECH, HP1-GAMMA, HP1Hs-gamma

Protein Interaction Partner: UBC, SUMO1, MDM2, EED, SUZ12, RNF2, WDR1, DCK, ADSS, THOP1, TALDO1, PTMS, OXCT1, IDH1, HSPE1, HECW2, PARK2, VHL, CHAF1A, AURKB, AURKA, EHMT2, FN1, TRIM39, HNF1A, CBX5, MDC1, TP53BP1, YWHAE, TNKS1BP1, H2AFY, ATXN7L2, CACNB4, BAHD1, CUL1, PCGF6, SIRT7, RYBP

Protein Size: 183

Molecular Weight: 21 kDa

Gene ID: 11335

NCBI Accession: [NM_007276](#), [NP_009207](#)

UniProt: [Q13185](#)

Application Details

Application Notes: Optimal working dilutions should be determined experimentally by the investigator.

Comment: Antigen size: 183 AA

Restrictions: For Research Use only

Handling

Format: Liquid

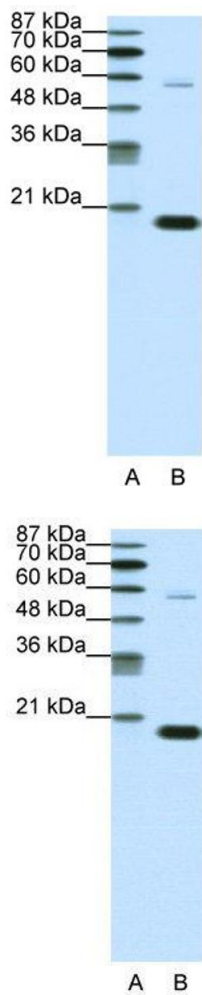
Concentration: Lot specific

Buffer: Liquid. Purified antibody supplied in 1x PBS buffer with 0.09 % (w/v) sodium azide and 2 %

Handling

| | |
|--------------------|---|
| | sucrose. |
| Preservative: | Sodium azide |
| Precaution of Use: | This product contains Sodium azide: a POISONOUS AND HAZARDOUS SUBSTANCE which should be handled by trained staff only. |
| Handling Advice: | Avoid repeated freeze-thaw cycles. |
| Storage: | -20 °C |
| Storage Comment: | For short term use, store at 2-8°C up to 1 week. For long term storage, store at -20°C in small aliquots to prevent freeze-thaw cycles. |

Images

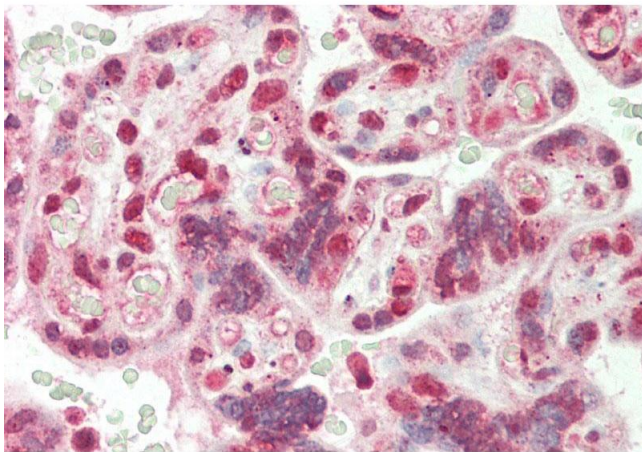


Western Blotting

Image 1. WB Suggested Anti-CBX3 Antibody Titration: 0.2-1 ug/ml ELISA Titer: 1:12500 Positive Control: Jurkat cell lysate CBX3 is strongly supported by BioGPS gene expression data to be expressed in Human Jurkat cells

Western Blotting

Image 2. WB Suggested Anti-CBX3 Antibody Titration: 0.2-1 µg/mL ELISA Titer: 1:12500 Positive Control: Jurkat cell lysate CBX3 is strongly supported by BioGPS gene expression data to be expressed in Human Jurkat cells



Immunohistochemistry

Image 3. Rabbit Anti-CBX3 antibody Formalin Fixed Paraffin Embedded Tissue: Human Placenta Primary antibody Concentration: 1:100 Secondary Antibody: Donkey anti-Rabbit-Cy3 Secondary Antibody Concentration: 1:200 Magnification: 20x Exposure Time: 0.5-2.0sec

Please check the [product details page](#) for more images. Overall 4 images are available for ABIN2775975.