



[Go to Product page](#)

Datasheet for ABIN2775988
anti-BTBD3 antibody (Middle Region)

1 Image

Overview

Quantity:	100 µL
Target:	BTBD3
Binding Specificity:	Middle Region
Reactivity:	Human, Mouse, Rat, Cow, Dog, Guinea Pig, Rabbit, Zebrafish (Danio rerio), Horse
Host:	Rabbit
Clonality:	Polyclonal
Conjugate:	This BTBD3 antibody is un-conjugated
Application:	Western Blotting (WB)

Product Details

Immunogen:	The immunogen is a synthetic peptide directed towards the middle region of human BTBD3
Sequence:	FLWYTAAKKP ELQFVSKARK GLVPQRCHRF QSCAYRSNQW RYRGRCDISIQ
Predicted Reactivity:	Cow: 100%, Dog: 100%, Guinea Pig: 100%, Horse: 100%, Human: 100%, Mouse: 100%, Rabbit: 100%, Rat: 100%, Zebrafish: 79%
Characteristics:	This is a rabbit polyclonal antibody against BTBD3. It was validated on Western Blot using a cell lysate as a positive control.
Purification:	Protein A purified

Target Details

Target:	BTBD3
---------	-------

Target Details

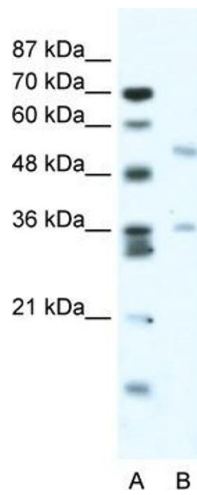
Alternative Name:	BTBD3 (BTBD3 Products)
Background:	BTBD3 is a protein containing BTB/POZ domain. Its function has not been determined yet. Alias Symbols: dJ742J24.1 Protein Interaction Partner: UBC, ELAVL1, PLXNB3, Protein Size: 522
Molecular Weight:	58 kDa
Gene ID:	22903
NCBI Accession:	NM_014962 , NP_055777
UniProt:	Q9Y2F9

Application Details

Application Notes:	Optimal working dilutions should be determined experimentally by the investigator.
Comment:	Antigen size: 522 AA
Restrictions:	For Research Use only

Handling

Format:	Liquid
Concentration:	Lot specific
Buffer:	Liquid. Purified antibody supplied in 1x PBS buffer with 0.09 % (w/v) sodium azide and 2 % sucrose.
Preservative:	Sodium azide
Precaution of Use:	This product contains Sodium azide: a POISONOUS AND HAZARDOUS SUBSTANCE which should be handled by trained staff only.
Handling Advice:	Avoid repeated freeze-thaw cycles.
Storage:	-20 °C
Storage Comment:	For short term use, store at 2-8°C up to 1 week. For long term storage, store at -20°C in small aliquots to prevent freeze-thaw cycles.



Western Blotting

Image 1. WB Suggested Anti-BTBD3 Antibody Titration:
2.5ug/ml ELISA Titer: 1:62500 Positive Control: Jurkat cell lysate