

Datasheet for ABIN2775991  
**anti-SUV420H1 antibody (Middle Region)**[Go to Product page](#)[1 Image](#)[1 Publication](#)

## Overview

Quantity:	100 µL
Target:	SUV420H1
Binding Specificity:	Middle Region
Reactivity:	Human, Rat, Mouse, Dog, Guinea Pig, Horse, Cow, Rabbit
Host:	Rabbit
Clonality:	Polyclonal
Conjugate:	This SUV420H1 antibody is un-conjugated
Application:	Western Blotting (WB)

## Product Details

Immunogen:	The immunogen is a synthetic peptide directed towards the middle region of human SUV420H1
Sequence:	PVINSKYGLR ETDKRLNRLK KLGDSSKNSD SQSVSSNTDA DTTQEKNNAS
Predicted Reactivity:	Cow: 100%, Dog: 100%, Guinea Pig: 100%, Horse: 100%, Human: 100%, Mouse: 100%, Rabbit: 100%, Rat: 100%
Characteristics:	This is a rabbit polyclonal antibody against SUV420H1. It was validated on Western Blot using a cell lysate as a positive control.
Purification:	Affinity Purified

## Target Details

Target:	SUV420H1
---------	----------

## Target Details

Alternative Name:	SUV420H1 ( <a href="#">SUV420H1 Products</a> )
Background:	<p>SUV420H1 is a protein that contains a SET domain. SET domains appear to be protein-protein interaction domains that mediate interactions with a family of proteins that display similarity with dual-specificity phosphatases (dsPTPases). The function of this gene has not been determined. This gene encodes a protein that contains a SET domain. SET domains appear to be protein-protein interaction domains that mediate interactions with a family of proteins that display similarity with dual-specificity phosphatases (dsPTPases). The function of this gene has not been determined. Two alternatively spliced transcript variants have been found for this gene.</p> <p>Alias Symbols: CGI-85, CGI85, KMT5B, MGC118906, MGC118909, MGC21161, MGC703</p> <p>Protein Interaction Partner: SMARCD1, HIST1H4A, YWHAQ,</p> <p>Protein Size: 393</p>
Molecular Weight:	44 kDa
Gene ID:	51111
NCBI Accession:	<a href="#">NM_016028</a> , <a href="#">NP_057112</a>
UniProt:	<a href="#">B7WNX7</a>

## Application Details

Application Notes:	Optimal working dilutions should be determined experimentally by the investigator.
Comment:	Antigen size: 393 AA
Restrictions:	For Research Use only

## Handling

Format:	Liquid
Concentration:	Lot specific
Buffer:	Liquid. Purified antibody supplied in 1x PBS buffer with 0.09 % (w/v) sodium azide and 2 % sucrose.
Preservative:	Sodium azide
Precaution of Use:	This product contains Sodium azide: a POISONOUS AND HAZARDOUS SUBSTANCE which should be handled by trained staff only.
Handling Advice:	Avoid repeated freeze-thaw cycles.

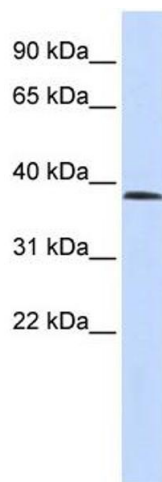
## Handling

Storage:	-20 °C
Storage Comment:	For short term use, store at 2-8°C up to 1 week. For long term storage, store at -20°C in small aliquots to prevent freeze-thaw cycles.

## Publications

Product cited in:	Majumder, Cash, Fisk: "Non-Overlapping Distributions and Functions of the VDAC Family in Ciliogenesis." in: <b>Cells</b> , Vol. 4, Issue 3, pp. 331-53, (2015) ( <a href="#">PubMed</a> ).
	Majumder, Fisk: "VDAC3 and Mps1 negatively regulate ciliogenesis." in: <b>Cell cycle (Georgetown, Tex.)</b> , Vol. 12, Issue 5, pp. 849-58, (2013) ( <a href="#">PubMed</a> ).
	Majumder, Slabodnick, Pike, Marquardt, Fisk: "VDAC3 regulates centriole assembly by targeting Mps1 to centrosomes." in: <b>Cell cycle (Georgetown, Tex.)</b> , Vol. 11, Issue 19, pp. 3666-78, (2012) ( <a href="#">PubMed</a> ).

## Images



### Western Blotting

**Image 1.** WB Suggested Anti-SUV420H1 Antibody Titration: 0.2-1 ug/ml ELISA Titer: 1:312500 Positive Control: Human Lung