

Datasheet for ABIN2775993
anti-BANP antibody (N-Term)[Go to Product page](#)

1 Image

Overview

Quantity:	100 µL
Target:	BANP
Binding Specificity:	N-Term
Reactivity:	Human, Mouse, Rat, Guinea Pig, Horse, Cow, Rabbit, Dog, Saccharomyces cerevisiae
Host:	Rabbit
Clonality:	Polyclonal
Conjugate:	This BANP antibody is un-conjugated
Application:	Western Blotting (WB)

Product Details

Immunogen:	The immunogen is a synthetic peptide directed towards the N-terminal region of human BANP
Sequence:	VVQIAVEDLS PDHPVLENH VVTDEDEPAL KRQRLEINCQ DPSIKSFLYS
Predicted Reactivity:	Cow: 100%, Dog: 86%, Guinea Pig: 100%, Horse: 100%, Human: 100%, Mouse: 93%, Rabbit: 93%, Rat: 100%, Yeast: 90%
Characteristics:	This is a rabbit polyclonal antibody against BANP. It was validated on Western Blot.
Purification:	Affinity Purified

Target Details

Target:	BANP
Alternative Name:	BANP (BANP Products)

Target Details

Background:	<p>This gene encodes a protein that binds to matrix attachment regions. The protein forms a complex with p53 and negatively regulates p53 transcription, and functions as a tumor suppressor and cell cycle regulator. Multiple transcript variants encoding different isoforms have been found for this gene.</p> <p>Alias Symbols: BEND1, SMAR1, SMARBP1</p> <p>Protein Size: 276</p>
-------------	---

Molecular Weight:	30 kDa
-------------------	--------

Gene ID:	54971
----------	-------

NCBI Accession:	NM_001173539 , NP_001167010
-----------------	---

UniProt:	Q8N9N5
----------	------------------------

Application Details

Restrictions:	For Research Use only
---------------	-----------------------

Handling

Format:	Liquid
---------	--------

Concentration:	1 mg/mL
----------------	---------

Buffer:	Liquid. Purified antibody supplied in 1x PBS buffer with 0.09 % (w/v) sodium azide and 2 % sucrose.
---------	---

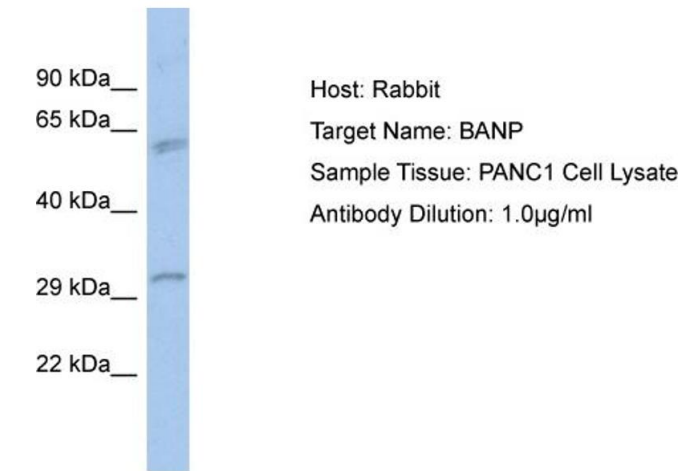
Preservative:	Sodium azide
---------------	--------------

Precaution of Use:	This product contains Sodium azide: a POISONOUS AND HAZARDOUS SUBSTANCE which should be handled by trained staff only.
--------------------	--

Handling Advice:	Avoid repeat freeze-thaw cycles.
------------------	----------------------------------

Storage:	-20 °C
----------	--------

Storage Comment:	For short term use, store at 2-8°C up to 1 week. For long term storage, store at -20°C in small aliquots to prevent freeze-thaw cycles.
------------------	---



Western Blotting

Image 1. Host: Rabbit Target Name: BANP Sample Type: PANC1 Whole Cell lysates Antibody Dilution: 1.0ug/ml