

Datasheet for ABIN2776008
anti-RORA antibody (Middle Region)[Go to Product page](#)

4 Images

1 Publication

Overview

Quantity:	100 µL
Target:	RORA
Binding Specificity:	Middle Region
Reactivity:	Human, Mouse, Rat, Cow, Dog, Horse, Rabbit, Guinea Pig, Goat, Zebrafish (Danio rerio)
Host:	Rabbit
Clonality:	Polyclonal
Conjugate:	This RORA antibody is un-conjugated
Application:	Western Blotting (WB)

Product Details

Immunogen:	The immunogen is a synthetic peptide directed towards the middle region of human RORA
Sequence:	GFMELCQNDQ IVLLKAGSLE VVFIRMCRAF DSQNNTVYFD GKYASPDVFK
Predicted Reactivity:	Cow: 100%, Dog: 100%, Goat: 100%, Guinea Pig: 100%, Horse: 100%, Human: 100%, Mouse: 100%, Rabbit: 93%, Rat: 100%, Zebrafish: 100%
Characteristics:	This is a rabbit polyclonal antibody against RORA. It was validated on Western Blot using a cell lysate as a positive control.
Purification:	Affinity Purified

Target Details

Target:	RORA
---------	------

Target Details

Alternative Name:	RORA (RORA Products)
Background:	<p>The protein encoded by RORA is a member of the NR1 subfamily of nuclear hormone receptors. It can bind as a monomer or as a homodimer to hormone response elements upstream of several genes to enhance the expression of those genes. The specific functions of this protein are not known, but it has been shown to interact with NM23-2, a nucleoside diphosphate kinase involved in organogenesis and differentiation, as well as with NM23-1, the product of a tumor metastasis suppressor candidate gene. The protein encoded by this gene is a member of the NR1 subfamily of nuclear hormone receptors. It can bind as a monomer or as a homodimer to hormone response elements upstream of several genes to enhance the expression of those genes. The specific functions of this protein are not known, but it has been shown to interact with NM23-2, a nucleoside diphosphate kinase involved in organogenesis and differentiation, as well as with NM23-1, the product of a tumor metastasis suppressor candidate gene. Four transcript variants encoding different isoforms have been described for this gene.</p> <p>Alias Symbols: MGC119326, MGC119329, NR1F1, ROR1, ROR2, ROR3, RZRA, RZR-ALPHA</p> <p>Protein Interaction Partner: GFAP, NSD1, NCOA1, PSMC5, SMARCD3, PTBP1, VPRBP, UBC, EZH2, DDB1, LMO3, NR0B1, ZXDC, PNRC2, COPS5, PNRC1, EIF3I, PROX1, LRIF1, RUVBL1, CEBPB, NCOA2, MED1, EP300, RORA, MYOD1, NME2, NME1,</p> <p>Protein Size: 468</p>
Molecular Weight:	53 kDa
Gene ID:	6095
NCBI Accession:	NM_134262 , NP_599024
UniProt:	P35398
Pathways:	Nuclear Receptor Transcription Pathway , Steroid Hormone Mediated Signaling Pathway , Regulation of Lipid Metabolism by PPARalpha

Application Details

Application Notes:	Optimal working dilutions should be determined experimentally by the investigator.
Comment:	Antigen size: 468 AA
Restrictions:	For Research Use only

Handling

Format:	Liquid
Concentration:	Lot specific
Buffer:	Liquid. Purified antibody supplied in 1x PBS buffer with 0.09 % (w/v) sodium azide and 2 % sucrose.
Preservative:	Sodium azide
Precaution of Use:	This product contains Sodium azide: a POISONOUS AND HAZARDOUS SUBSTANCE which should be handled by trained staff only.
Handling Advice:	Avoid repeated freeze-thaw cycles.
Storage:	-20 °C
Storage Comment:	For short term use, store at 2-8°C up to 1 week. For long term storage, store at -20°C in small aliquots to prevent freeze-thaw cycles.

Publications

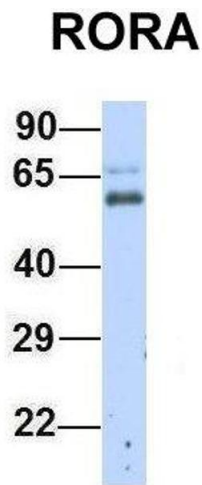
Product cited in:	Tordjman, Leroyer, Chauvet, Quette, Chauvet, Tomkiewicz, Chapron, Barouki, Forest, Aggerbeck, Antoine: "Cytosolic aspartate aminotransferase, a new partner in adipocyte glyceroneogenesis and an atypical target of thiazolidinedione." in: The Journal of biological chemistry , Vol. 282, Issue 32, pp. 23591-602, (2007) (PubMed).
-------------------	---

Images



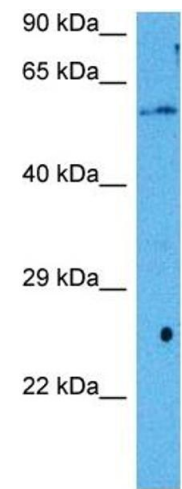
Western Blotting

Image 1. WB Suggested Anti-RORA Antibody Titration: 0.2-1 ug/ml ELISA Titer: 1:1562500 Positive Control: 721_B cell lysate RORA is strongly supported by BioGPS gene expression data to be expressed in Human 721_B cells



Western Blotting

Image 2. Host: Rabbit Target Name: RORA Sample Type:
Human Fetal Heart Antibody Dilution: 1.0ug/ml



Western Blotting

Image 3. Host: Mouse Target Name: RORA Sample Tissue:
Mouse Liver Antibody Dilution: 1ug/ml

Please check the [product details page](#) for more images. Overall 4 images are available for ABIN2776008.