

Datasheet for ABIN2776016
anti-CREM antibody (N-Term)[Go to Product page](#)

1 Image

2 Publications

Overview

Quantity:	100 µL
Target:	CREM
Binding Specificity:	N-Term
Reactivity:	Human, Mouse, Rat, Cow, Dog, Rabbit, Sheep, Guinea Pig, Horse, Zebrafish (Danio rerio), Goat
Host:	Rabbit
Clonality:	Polyclonal
Conjugate:	This CREM antibody is un-conjugated
Application:	Western Blotting (WB)

Product Details

Immunogen:	The immunogen is a synthetic peptide directed towards the N terminal region of human CREM
Sequence:	MAAATGDMPT YQIRAPTAAL PQGVVMAASP GSLHSPQQLA EEATRKRELR
Predicted Reactivity:	Cow: 100%, Dog: 100%, Goat: 100%, Guinea Pig: 100%, Horse: 100%, Human: 100%, Mouse: 100%, Rabbit: 100%, Rat: 100%, Sheep: 100%, Zebrafish: 79%
Characteristics:	This is a rabbit polyclonal antibody against CREM. It was validated on Western Blot using a cell lysate as a positive control.
Purification:	Protein A purified

Target Details

Target:	CREM
---------	------

Target Details

Alternative Name:	CREM (CREM Products)
Background:	<p>CREM is a bZIP transcription factor that binds to the cAMP responsive element found in many viral and cellular promoters. It is an important component of cAMP-mediated signal transduction during the spermatogenetic cycle, as well as other complex processes. Alternative promoter and translation initiation site usage allows this gene to exert spatial and temporal specificity to cAMP responsiveness. Multiple alternatively spliced transcript variants encoding several different isoforms have been found for this gene, with some of them functioning as activators and some as repressors of transcription.</p> <p>Alias Symbols: ICER, CREM-2, hCREM-2</p> <p>Protein Interaction Partner: CREB1, PIAS3, CASP8AP2, UBE2I, UBC, SP100, ATXN1, EMP3, HHV8GK18_gp81, MAPK3, CREB3L4, HDAC1, CREB3L1, TAF4, CAMK2D, GSK3A, FHL5, GSK3B, KCNIP3, CAMK2G, PRKACA, CSNK1A1, CREBBP, TBP, PRKCA, SPI1, CREM, ATF1, CDC34, CDK1, CSNK2A2, CSNK2A1, CD34,</p> <p>Protein Size: 120</p>
Molecular Weight:	13 kDa
Gene ID:	1390
NCBI Accession:	NM_182717 , NP_874386
UniProt:	O75519
Pathways:	Retinoic Acid Receptor Signaling Pathway

Application Details

Application Notes:	Optimal working dilutions should be determined experimentally by the investigator.
Comment:	Antigen size: 120 AA
Restrictions:	For Research Use only

Handling

Format:	Liquid
Concentration:	Lot specific
Buffer:	Liquid. Purified antibody supplied in 1x PBS buffer with 0.09 % (w/v) sodium azide and 2 % sucrose.
Preservative:	Sodium azide

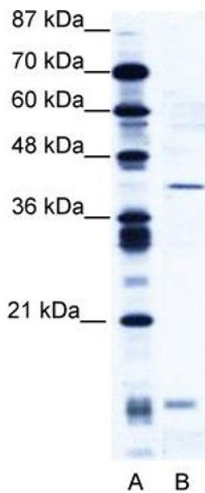
Handling

Precaution of Use:	This product contains Sodium azide: a POISONOUS AND HAZARDOUS SUBSTANCE which should be handled by trained staff only.
Handling Advice:	Avoid repeated freeze-thaw cycles.
Storage:	-20 °C
Storage Comment:	For short term use, store at 2-8°C up to 1 week. For long term storage, store at -20°C in small aliquots to prevent freeze-thaw cycles.

Publications

Product cited in:	Lazrek, Goffard, Schanen, Karquel, Bocket, Lion, Devaux, Hedouin, Gosset, Hober: "Detection of hepatitis C virus antibodies and RNA among medicolegal autopsy cases in Northern France." in: Diagnostic microbiology and infectious disease , Vol. 55, Issue 1, pp. 55-8, (2006) (PubMed).
-------------------	---

Images



Western Blotting

Image 1. WB Suggested Anti-CREM Antibody Titration: 2.5ug/ml ELISA Titer: 1:1562500 Positive Control: Jurkat cell lysate