



[Go to Product page](#)

Datasheet for ABIN2776019

anti-THRA antibody (Middle Region)

4 Images

1 Publication

Overview

Quantity:	100 µL
Target:	THRA
Binding Specificity:	Middle Region
Reactivity:	Human, Mouse, Rat, Dog, Cow, Rabbit, Sheep, Horse, Zebrafish (Danio rerio), Guinea Pig
Host:	Rabbit
Clonality:	Polyclonal
Conjugate:	This THRA antibody is un-conjugated
Application:	Western Blotting (WB)

Product Details

Immunogen:	The immunogen is a synthetic peptide directed towards the middle region of human THRA
Sequence:	DQIILLKGCC MEIMSLRAAV RYDPESDTLT LSGEMAVKRE QLKNGGLGVV
Predicted Reactivity:	Cow: 100%, Dog: 100%, Guinea Pig: 100%, Horse: 100%, Human: 100%, Mouse: 100%, Rabbit: 100%, Rat: 100%, Sheep: 100%, Zebrafish: 100%
Characteristics:	This is a rabbit polyclonal antibody against THRA. It was validated on Western Blot.
Purification:	Affinity Purified

Target Details

Target:	THRA
Alternative Name:	THRA (THRA Products)

Target Details

Background: The THRA gene encodes a protein that is a nuclear hormone receptor for triiodothyronine. It is one of the several receptors for thyroid hormone, and has been shown to mediate the biological activities of thyroid hormone. Knockout studies in mice suggest that the different receptors, while having certain extent of redundancy, may mediate different functions of thyroid hormone.

Alias Symbols: AR7, EAR7, ERB-T-1, ERBA, ERBA1, MGC000261, MGC43240, NR1A1, THRA1, THRA2, c-ERBA-1, CHNG6

Protein Interaction Partner: L3MBTL3, AMOTL2, RANBP9, NCOR1, PTGES3, THRA, RXRA, FOXJ1, CLIC1, C1D, NCOR2, BUB3, tat, GTF2B, ARID5A, SUMO1, SUMO3, MED1, NRIP1, MED21, CDK7, MED25, RGN, CUL1, SEPP1, TBL1XR1, HDAC3, SMC1A, XRCC5, TBL1X, PRKDC, LIG3, HSPA4, GPS2, XRCC6, PARP1, EMD, GRIP

Protein Size: 490

Molecular Weight: 55 kDa

Gene ID: 7067

NCBI Accession: [NM_003250](#), [NP_003241](#)

UniProt: [P10827](#)

Pathways: [Nuclear Receptor Transcription Pathway](#), [Steroid Hormone Mediated Signaling Pathway](#), [Sensory Perception of Sound](#), [Cellular Response to Molecule of Bacterial Origin](#), [Regulation of Lipid Metabolism by PPARalpha](#), [Regulation of Muscle Cell Differentiation](#), [Maintenance of Protein Location](#), [Skeletal Muscle Fiber Development](#)

Application Details

Application Notes: Optimal working dilutions should be determined experimentally by the investigator.

Comment: Antigen size: 490 AA

Restrictions: For Research Use only

Handling

Format: Liquid

Concentration: Lot specific

Buffer: Liquid. Purified antibody supplied in 1x PBS buffer with 0.09 % (w/v) sodium azide and 2 % sucrose.

Preservative: Sodium azide

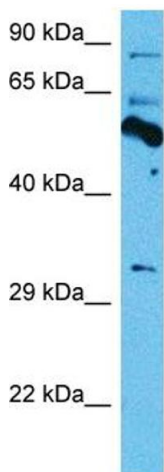
Handling

Precaution of Use:	This product contains Sodium azide: a POISONOUS AND HAZARDOUS SUBSTANCE which should be handled by trained staff only.
Handling Advice:	Avoid repeated freeze-thaw cycles.
Storage:	-20 °C
Storage Comment:	For short term use, store at 2-8°C up to 1 week. For long term storage, store at -20°C in small aliquots to prevent freeze-thaw cycles.

Publications

Product cited in:	Majumder, Cash, Fisk: "Non-Overlapping Distributions and Functions of the VDAC Family in Ciliogenesis." in: Cells , Vol. 4, Issue 3, pp. 331-53, (2015) (PubMed).
	Majumder, Fisk: "VDAC3 and Mps1 negatively regulate ciliogenesis." in: Cell cycle (Georgetown, Tex.) , Vol. 12, Issue 5, pp. 849-58, (2013) (PubMed).
	Majumder, Slabodnick, Pike, Marquardt, Fisk: "VDAC3 regulates centriole assembly by targeting Mps1 to centrosomes." in: Cell cycle (Georgetown, Tex.) , Vol. 11, Issue 19, pp. 3666-78, (2012) (PubMed).

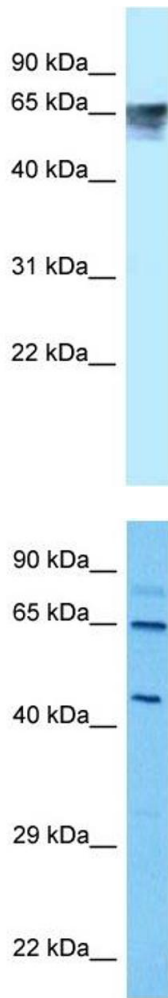
Images



Host: Rabbit
Target Name: Thra
Sample Type: Mouse Heart Lysate
Antibody Dilution: 1.0µg/ml

Western Blotting

Image 1. Host: Mouse Target Name: THRA Sample Tissue: Mouse Heart Antibody Dilution: 1ug/ml



Western Blotting

Image 2. WB Suggested Anti-THRA Antibody Titration: 0.2-1 ug/ml ELISA Titer: 1:62500 Positive Control: Jurkat cell lysate There is BioGPS gene expression data showing that THRA is expressed in Jurkat

Western Blotting

Image 3. Host: Mouse Target Name: THRA Sample Tissue: Mouse Spleen Antibody Dilution: 1ug/ml

Please check the [product details page](#) for more images. Overall 4 images are available for ABIN2776019.