

Datasheet for ABIN2776023
anti-RFX6 antibody (Middle Region)[Go to Product page](#)

1 Image

Overview

Quantity:	100 µL
Target:	RFX6
Binding Specificity:	Middle Region
Reactivity:	Human, Mouse, Guinea Pig, Horse, Rabbit, Cow, Rat, Dog, Zebrafish (Danio rerio)
Host:	Rabbit
Clonality:	Polyclonal
Conjugate:	This RFX6 antibody is un-conjugated
Application:	Western Blotting (WB)

Product Details

Immunogen:	The immunogen is a synthetic peptide directed towards the middle region of MOUSE Rfx6
Sequence:	LGTRGHSKYH YYGIGIKESS AYYHSVYSGK GLTRFSGSKL KNEGGFTRKY
Predicted Reactivity:	Cow: 100%, Dog: 100%, Guinea Pig: 100%, Horse: 100%, Human: 100%, Mouse: 100%, Rabbit: 100%, Rat: 100%, Zebrafish: 100%
Characteristics:	This is a rabbit polyclonal antibody against Rfx6. It was validated on Western Blot.
Purification:	Affinity Purified

Target Details

Target:	RFX6
Alternative Name:	Rfx6 (RFX6 Products)

Target Details

Background:	<p>Transcription factor required to direct islet cell differentiation during endocrine pancreas development. Specifically required for the differentiation of 4 of the 5 islet cell types and for the production of insulin. Not required for pancreatic PP (polypeptide-producing) cells differentiation. Acts downstream of NEUROG3 and regulates the transcription factors involved in beta-cell maturation and function, thereby restricting the expression of the beta-cell differentiation and specification genes, and thus the beta-cell fate choice. Activates transcription by forming a heterodimer with RFX3 and binding to the X-box in the promoter of target genes.</p> <p>Protein Size: 524</p>
-------------	---

Molecular Weight:	57 kDa
-------------------	--------

Gene ID:	320995
----------	--------

Pathways:	Carbohydrate Homeostasis
-----------	--

Application Details

Application Notes:	Optimal working dilution should be determined by the investigator.
--------------------	--

Restrictions:	For Research Use only
---------------	-----------------------

Handling

Format:	Liquid
---------	--------

Concentration:	1 mg/mL
----------------	---------

Buffer:	Liquid. Purified antibody supplied in 1x PBS buffer with 0.09 % (w/v) sodium azide and 2 % sucrose.
---------	---

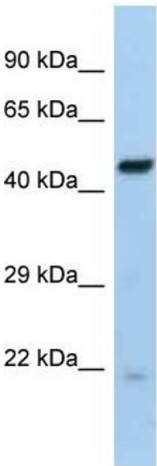
Preservative:	Sodium azide
---------------	--------------

Precaution of Use:	This product contains Sodium azide: a POISONOUS AND HAZARDOUS SUBSTANCE which should be handled by trained staff only.
--------------------	--

Handling Advice:	Avoid repeat freeze-thaw cycles.
------------------	----------------------------------

Storage:	-20 °C
----------	--------

Storage Comment:	For short term use, store at 2-8°C up to 1 week. For long term storage, store at -20°C in small aliquots to prevent freeze-thaw cycles.
------------------	---



Host: Rabbit
Target Name: Rfx6
Sample Tissue: Mouse Liver Lysate
Antibody Dilution: 1.0µg/ml

Western Blotting

Image 1. Host: Rabbit Target Name: Rfx6 Sample Type: Mouse Liver lysates Antibody Dilution: 1.0ug/ml