

Datasheet for ABIN2776026

**anti-FAM189B antibody (N-Term)**[Go to Product page](#)**1** Image

## Overview

Quantity:	100 µL
Target:	FAM189B
Binding Specificity:	N-Term
Reactivity:	Human, Mouse, Rat, Dog, Cow, Horse, Rabbit, Guinea Pig, Pig
Host:	Rabbit
Clonality:	Polyclonal
Conjugate:	This FAM189B antibody is un-conjugated
Application:	Western Blotting (WB)

## Product Details

Immunogen:	The immunogen is a synthetic peptide directed towards the N terminal region of human C1orf2
Sequence:	PLLRPCPESG QELKVAPNST CDEARGALKN LLFSVCGLTI CAAIICTLSA
Predicted Reactivity:	Cow: 87%, Dog: 100%, Guinea Pig: 80%, Horse: 93%, Human: 100%, Mouse: 87%, Pig: 100%, Rabbit: 93%, Rat: 87%
Characteristics:	This is a rabbit polyclonal antibody against C1orf2. It was validated on Western Blot using a cell lysate as a positive control.
Purification:	Affinity Purified

## Target Details

Target:	FAM189B
---------	---------

## Target Details

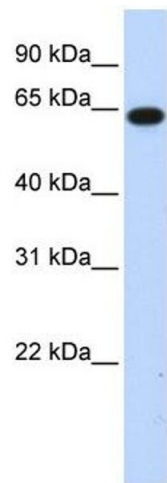
Alternative Name:	C1orf2 ( <a href="#">FAM189B Products</a> )
Background:	<p>The exact function of C1orf2 remains unknown.</p> <p>Alias Symbols: COTE1, cote 1, C1orf2</p> <p>Protein Interaction Partner: UQCRH, SNTA1, UBC,</p> <p>Protein Size: 668</p>
Molecular Weight:	71 kDa
Gene ID:	10712
NCBI Accession:	<a href="#">NM_006589</a> , <a href="#">NP_006580</a>
UniProt:	<a href="#">Q9BR66</a>

## Application Details

Application Notes:	Optimal working dilutions should be determined experimentally by the investigator.
Comment:	Antigen size: 668 AA
Restrictions:	For Research Use only

## Handling

Format:	Liquid
Concentration:	Lot specific
Buffer:	Liquid. Purified antibody supplied in 1x PBS buffer with 0.09 % (w/v) sodium azide and 2 % sucrose.
Preservative:	Sodium azide
Precaution of Use:	This product contains Sodium azide: a POISONOUS AND HAZARDOUS SUBSTANCE which should be handled by trained staff only.
Handling Advice:	Avoid repeated freeze-thaw cycles.
Storage:	-20 °C
Storage Comment:	For short term use, store at 2-8°C up to 1 week. For long term storage, store at -20°C in small aliquots to prevent freeze-thaw cycles.



Western Blotting

**Image 1.** WB Suggested Anti-C1orf2 Antibody Titration:  
0.2-1 ug/ml ELISA Titer: 1:12500 Positive Control:  
Transfected 293T