

Datasheet for ABIN2776032

anti-C22orf31 antibody (Middle Region)



[Go to Product page](#)

1 Image

1 Publication

Overview

Quantity:	100 µL
Target:	C22orf31
Binding Specificity:	Middle Region
Reactivity:	Human, Cow, Dog, Horse, Pig
Host:	Rabbit
Clonality:	Polyclonal
Conjugate:	This C22orf31 antibody is un-conjugated
Application:	Western Blotting (WB)

Product Details

Immunogen:	The immunogen is a synthetic peptide directed towards the middle region of human HS747E2A
Sequence:	MKATQQARKR NFISSKSKQP AGHRRPAGGI RESKESSKEK KLTVRQDLED
Predicted Reactivity:	Cow: 92%, Dog: 92%, Horse: 92%, Human: 100%, Pig: 92%
Characteristics:	This is a rabbit polyclonal antibody against HS747E2A. It was validated on Western Blot using a cell lysate as a positive control.
Purification:	Protein A purified

Target Details

Target:	C22orf31
Alternative Name:	HS747E2A (C22orf31 Products)

Target Details

Background:	The gene encoding the hypothetical protein HS747E2A is located on chromosome 22. Alias Symbols: HS747E2A, bK747E2.1 Protein Size: 290
Molecular Weight:	33 kDa
Gene ID:	25770
NCBI Accession:	NM_015370 , NP_056185
UniProt:	O95567

Application Details

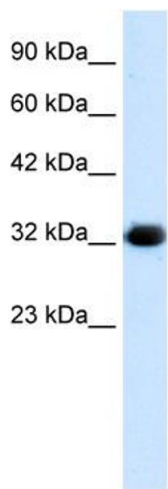
Application Notes:	Optimal working dilutions should be determined experimentally by the investigator.
Comment:	Antigen size: 290 AA
Restrictions:	For Research Use only

Handling

Format:	Liquid
Concentration:	Lot specific
Buffer:	Liquid. Purified antibody supplied in 1x PBS buffer with 0.09 % (w/v) sodium azide and 2 % sucrose.
Preservative:	Sodium azide
Precaution of Use:	This product contains Sodium azide: a POISONOUS AND HAZARDOUS SUBSTANCE which should be handled by trained staff only.
Handling Advice:	Avoid repeated freeze-thaw cycles.
Storage:	-20 °C
Storage Comment:	For short term use, store at 2-8°C up to 1 week. For long term storage, store at -20°C in small aliquots to prevent freeze-thaw cycles.

Publications

Product cited in:	Collins, Wright, Edwards, Davis, Grinham, Cole, Goward, Aguado, Mallya, Mokrab, Huckle, Beare, Dunham: "A genome annotation-driven approach to cloning the human ORFeome." in: Genome biology , Vol. 5, Issue 10, pp. R84, (2004) (PubMed).
-------------------	--



Western Blotting

Image 1. WB Suggested Anti-HS747E2A Antibody Titration:
1.25ug/ml ELISA Titer: 1:500 Positive Control: HepG2 cell lysate