

Datasheet for ABIN2776038  
**anti-LIMA1 antibody (N-Term)**

## 3 Images

[Go to Product page](#)

## Overview

Quantity:	100 µL
Target:	LIMA1
Binding Specificity:	N-Term
Reactivity:	Human, Mouse, Rat, Rabbit, Horse
Host:	Rabbit
Clonality:	Polyclonal
Conjugate:	This LIMA1 antibody is un-conjugated
Application:	Western Blotting (WB)

## Product Details

Immunogen:	The immunogen is a synthetic peptide directed towards the N terminal region of human LIMA1
Sequence:	PHIKDGEDLK DHSTESKKME NCLGESRHEV EKSEISENTD ASGKIEKYNV
Predicted Reactivity:	Horse: 79%, Human: 100%, Mouse: 79%, Rabbit: 86%, Rat: 79%
Characteristics:	This is a rabbit polyclonal antibody against LIMA1. It was validated on Western Blot using a cell lysate as a positive control.
Purification:	Affinity Purified

## Target Details

Target:	LIMA1
Alternative Name:	LIMA1 ( <a href="#">LIMA1 Products</a> )

## Target Details

Background:	<p>EPLIN is a cytoskeleton-associated protein that inhibits actin filament depolymerization and cross-links filaments in bundles. EPLIN is a cytoskeleton-associated protein that inhibits actin filament depolymerization and cross-links filaments in bundles (Maul et al., 2003 [PubMed 12566430]). [supplied by OMIM]. Publication Note: This RefSeq record includes a subset of the publications that are available for this gene. Please see the Entrez Gene record to access additional publications.</p> <p>Alias Symbols: EPLIN, FLJ38853, MGC131726, SREBP3</p> <p>Protein Interaction Partner: TP53, UBC, RPA3, RPA2, RPA1, SUZ12, RNF2, EZH2, BMI1, LRCH3, YWHAQ, YWHAB, PAN2, YWHAE, FMNL1, PAXIP1, ATP6V1B1, APP, UBXN6, LRRK2, ARRB2, ARRB1, SVIL, YWHAG,</p> <p>Protein Size: 759</p>
-------------	---

Molecular Weight:	85 kDa
-------------------	--------

Gene ID:	51474
----------	-------

NCBI Accession:	<a href="#">NM_016357</a> , <a href="#">NP_057441</a>
-----------------	---

UniProt:	<a href="#">Q9UHB6</a>
----------	------------------------

## Application Details

Application Notes:	Optimal working dilutions should be determined experimentally by the investigator.
--------------------	--

Comment:	Antigen size: 759 AA
----------	----------------------

Restrictions:	For Research Use only
---------------	-----------------------

## Handling

Format:	Liquid
---------	--------

Concentration:	Lot specific
----------------	--------------

Buffer:	Liquid. Purified antibody supplied in 1x PBS buffer with 0.09 % (w/v) sodium azide and 2 % sucrose.
---------	---

Preservative:	Sodium azide
---------------	--------------

Precaution of Use:	This product contains Sodium azide: a POISONOUS AND HAZARDOUS SUBSTANCE which should be handled by trained staff only.
--------------------	--

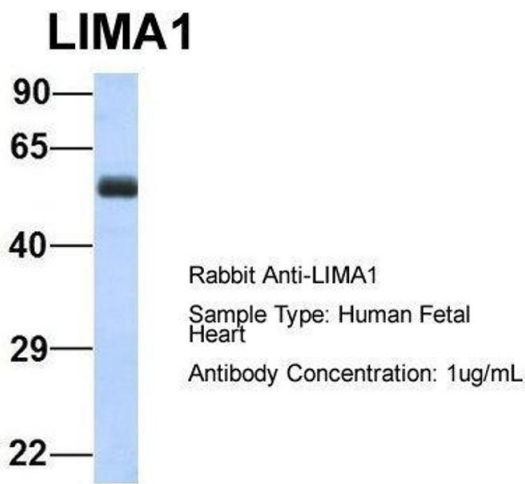
Handling Advice:	Avoid repeated freeze-thaw cycles.
------------------	------------------------------------

Storage:	-20 °C
----------	--------

Handling

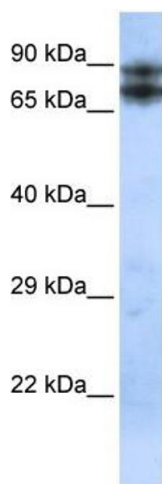
Storage Comment: For short term use, store at 2-8°C up to 1 week. For long term storage, store at -20°C in small aliquots to prevent freeze-thaw cycles.

Images



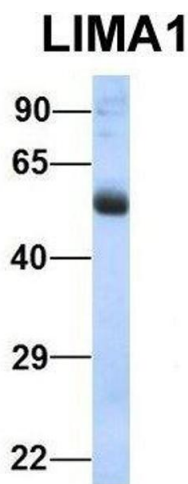
**Western Blotting**

**Image 1.** Host: Rabbit Target Name: LIMA1 Sample Type: Human Fetal Heart Antibody Dilution: 1.0ug/ml



**Western Blotting**

**Image 2.** WB Suggested Anti-LIMA1 Antibody Titration: 0.2-1 ug/ml ELISA Titer: 1:12500 Positive Control: Human Placenta



**Western Blotting**

**Image 3.** Host: Rabbit Target Name: LIMA1 Sample Type: Human Fetal Lung Antibody Dilution: 1.0ug/ml