

Datasheet for ABIN2776042

**anti-WD Repeat Domain 45B (WDR45B) (Middle Region)
antibody**[Go to Product page](#)**1** Image

Overview

Quantity:	100 µL
Target:	WD Repeat Domain 45B (WDR45B)
Binding Specificity:	Middle Region
Reactivity:	Human, Mouse, Rat, Cow, Guinea Pig, Horse, Rabbit, Zebrafish (Danio rerio), Dog
Host:	Rabbit
Clonality:	Polyclonal
Conjugate:	Un-conjugated
Application:	Western Blotting (WB)

Product Details

Immunogen:	The immunogen is a synthetic peptide directed towards the middle region of human WDR45L
Sequence:	LCVLC PNSNN SLLAFPGTHT GHVQLVDLAS TEKPPVDIPA HEGVLSCIAL
Predicted Reactivity:	Cow: 100%, Dog: 100%, Guinea Pig: 100%, Horse: 100%, Human: 100%, Mouse: 100%, Rabbit: 100%, Rat: 100%, Zebrafish: 79%
Characteristics:	This is a rabbit polyclonal antibody against WDR45L. It was validated on Western Blot using a cell lysate as a positive control.
Purification:	Affinity Purified

Target Details

Target:	WD Repeat Domain 45B (WDR45B)
---------	-------------------------------

Target Details

Alternative Name:	WDR45L (WDR45B Products)
Background:	<p>WDR45L is a member of the WIPI or SVP1 family of WD40 repeat-containing proteins. The protein contains seven WD40 repeats that are thought to fold into a beta-propeller structure that mediates protein-protein interactions, and a conserved motif for interaction with phospholipids. This gene encodes a member of the WIPI or SVP1 family of WD40 repeat-containing proteins. The protein contains seven WD40 repeats that are thought to fold into a beta-propeller structure that mediates protein-protein interactions, and a conserved motif for interaction with phospholipids. The human genome contains several pseudogenes of this gene.</p> <p>Alias Symbols: WIPI-3, WIPI3, WDR45L</p> <p>Protein Interaction Partner: UBC, TXNDC17, UPP1, TYMS, APP, ELAVL1,</p> <p>Protein Size: 344</p>
Molecular Weight:	38 kDa
Gene ID:	56270
NCBI Accession:	NM_019613 , NP_062559
UniProt:	Q5MNZ6

Application Details

Application Notes:	Optimal working dilutions should be determined experimentally by the investigator.
Comment:	Antigen size: 344 AA
Restrictions:	For Research Use only

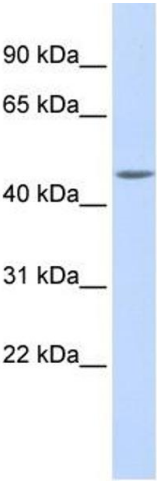
Handling

Format:	Liquid
Concentration:	Lot specific
Buffer:	Liquid. Purified antibody supplied in 1x PBS buffer with 0.09 % (w/v) sodium azide and 2 % sucrose.
Preservative:	Sodium azide
Precaution of Use:	This product contains Sodium azide: a POISONOUS AND HAZARDOUS SUBSTANCE which should be handled by trained staff only.
Handling Advice:	Avoid repeated freeze-thaw cycles.

Handling

Storage:	-20 °C
Storage Comment:	For short term use, store at 2-8°C up to 1 week. For long term storage, store at -20°C in small aliquots to prevent freeze-thaw cycles.

Images



Western Blotting

Image 1. WB Suggested Anti-WDR45L Antibody Titration: 0.2-1 ug/ml ELISA Titer: 1:62500 Positive Control: Human Muscle