

Datasheet for ABIN2776050
anti-PHF11 antibody (Middle Region)

3 Images

1 Publication

[Go to Product page](#)

Overview

Quantity:	100 µL
Target:	PHF11
Binding Specificity:	Middle Region
Reactivity:	Human, Dog
Host:	Rabbit
Clonality:	Polyclonal
Conjugate:	This PHF11 antibody is un-conjugated
Application:	Western Blotting (WB), Immunohistochemistry (IHC)

Product Details

Immunogen:	The immunogen is a synthetic peptide directed towards the middle region of human PHF11
Sequence:	FSGVKRKRGR KKPLSGNHVQ PPETMKCNTF IRQVKEEHGR HTDATVKVPF
Predicted Reactivity:	Dog: 85%, Human: 100%
Characteristics:	This is a rabbit polyclonal antibody against PHF11. It was validated on Western Blot using a cell lysate as a positive control.
Purification:	Affinity Purified

Target Details

Target:	PHF11
Alternative Name:	PHF11 (PHF11 Products)

Target Details

Background: PHF11 contains two PHD zinc fingers and probably regulates transcription. Distinctive splice variants were expressed in immune tissues and cells.

Alias Symbols: APY, BCAP, IGEL, IGER, IGER, NYREN34, NY-REN-34, RP11-185C18.3

Protein Interaction Partner: MCPH1, LSM8, PIAS4, AGPAT2, CSNK2B,

Protein Size: 331

Molecular Weight: 37 kDa

Gene ID: 51131

NCBI Accession: [NM_001040443](#), [NP_001035533](#)

UniProt: [Q9UIL8](#)

Application Details

Application Notes: Optimal working dilutions should be determined experimentally by the investigator.

Comment: Antigen size: 331 AA

Restrictions: For Research Use only

Handling

Format: Liquid

Concentration: Lot specific

Buffer: Liquid. Purified antibody supplied in 1x PBS buffer with 0.09 % (w/v) sodium azide and 2 % sucrose.

Preservative: Sodium azide

Precaution of Use: This product contains Sodium azide: a POISONOUS AND HAZARDOUS SUBSTANCE which should be handled by trained staff only.

Handling Advice: Avoid repeated freeze-thaw cycles.

Storage: -20 °C

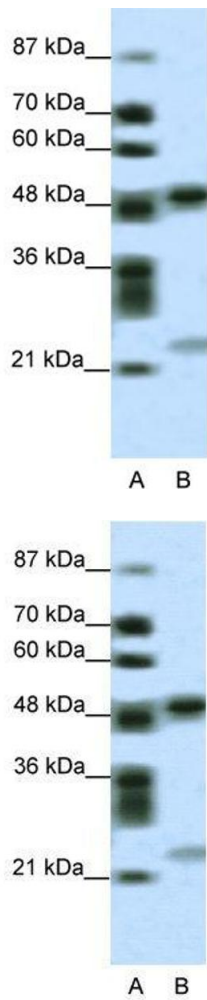
Storage Comment: For short term use, store at 2-8°C up to 1 week. For long term storage, store at -20°C in small aliquots to prevent freeze-thaw cycles.

Publications

Product cited in: Lazrek, Goffard, Schanen, Karquel, Bocket, Lion, Devaux, Hedouin, Gosset, Hober: "Detection of

hepatitis C virus antibodies and RNA among medicolegal autopsy cases in Northern France." in:
Diagnostic microbiology and infectious disease, Vol. 55, Issue 1, pp. 55-8, (2006) ([PubMed](#)).

Images

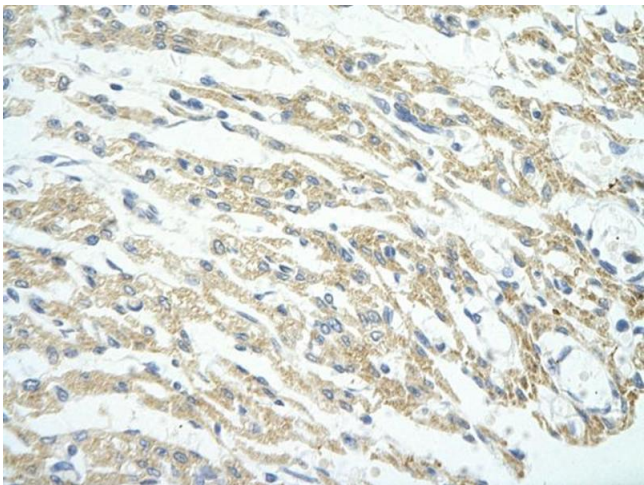


Western Blotting

Image 1. WB Suggested Anti-PHF11 Antibody Titration: 0.2-1 ug/ml ELISA Titer: 1:62500 Positive Control: HepG2 cell lysate PHF11 is supported by BioGPS gene expression data to be expressed in HepG2

Western Blotting

Image 2. WB Suggested Anti-PHF11 Antibody Titration: 0.2-1 µg/mL ELISA Titer: 1::2500 Positive Control: HepG2 cell lysate PHF11 is supported by BioGPS gene expression data to be expressed in HepG2



Immunohistochemistry

Image 3. Rabbit Anti-PHF11 antibody Paraffin Embedded Tissue: Human Heart cell Cellular Data: cardiac cell Antibody Concentration: 4.0-8.0 ug/ml Magnification: 400X